

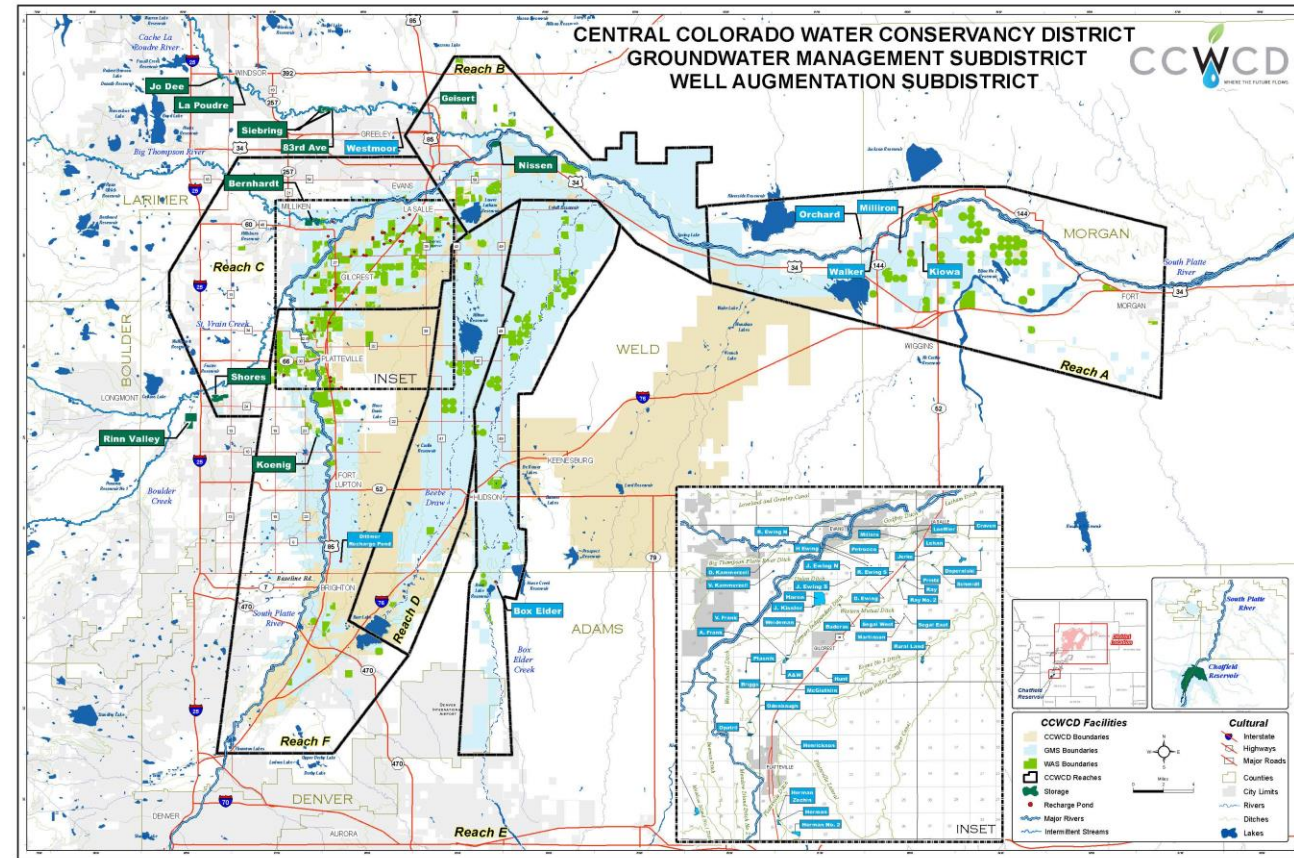
**RESOLUTIONS 2024-109; 2024-110 AND
2024-111: INTERGOVERNMENTAL
AGREEMENTS WITH
CENTRAL COLORADO WATER
CONSERVANCY DISTRICT**

OCTOBER 15, 2024



IGA WITH CENTRAL BACKGROUND

- Central Colorado Conservancy District (“Central”) has been operating since 1965 and was created to develop, manage, and protect water resources in Northeast Colorado, primarily for agricultural purposes
- Central is also a member of the Chatfield Storage Reallocation Project with a current ownership of 4,274 AF of storage space and another 1,000 AF under option with the State
 - The Town of Castle Rock currently owns 848 AF of space with another 1,152 AF under option with the State



- (1) Central Colorado Water Conservancy District
- (2) Groundwater Management Subdistrict
- (3) Well Augmentation Subdistrict

IGA WITH CENTRAL

BACKGROUND

- Castle Rock and Central own water rights in Weld County in similar areas
- Opportunities for the parties to optimize the use of water rights in areas closer to each other's service areas:
 - Central's use of the Town's Rothe recharge credits in exchange for water in Chatfield reservoir;
 - Cooperation on a storage project on the South Platte River near Kersey, Colorado;
 - Cooperation on a pipeline extension to the South Platte River to transport the Town's Lost Creek water;
 - Cooperation on a pipeline project to transfer water from Chatfield Reservoir to Rueter-Hess Reservoir.
- This IGA does not create any financial obligation for either party



Aerial view of Chatfield Reservoir looking east

ROTHE-CHATFIELD IGA

ROTHE RECHARGE CREDITS

Central's use of the Town's Rothe recharge credits in exchange for water in Chatfield reservoir

- Mutually beneficial agreement:
 1. Central could use the return flow credits as a projection tool for pumping the hundreds of wells in their augmentation plan
 2. The Town can use Central's 1983 water stored in Chatfield by exchanging the water upstream to our various diversion points and using the water within the Town boundaries
- The Town cannot use its Rothe water until the Box Elder project begins operations
- Central would agree to store the water in their storage account until the Town requests that the water be booked over into the Town's Chatfield storage account



Diversion from Riverside Canal to Rothe Recharge basins

ROTHE-CHATFIELD IGA

TERM AND BUDGET IMPACT

Term and Termination

- Effective upon execution and continue until April 30, 2025.
 - Automatically extended for five one-year periods
- First term - Town will trade 156 AF of Rothe water for 113 AF of Central's 1983 stored water in Chatfield

Budget Impact

- This IGA provides for an exchange of water and there will be no monetary exchange between the parties

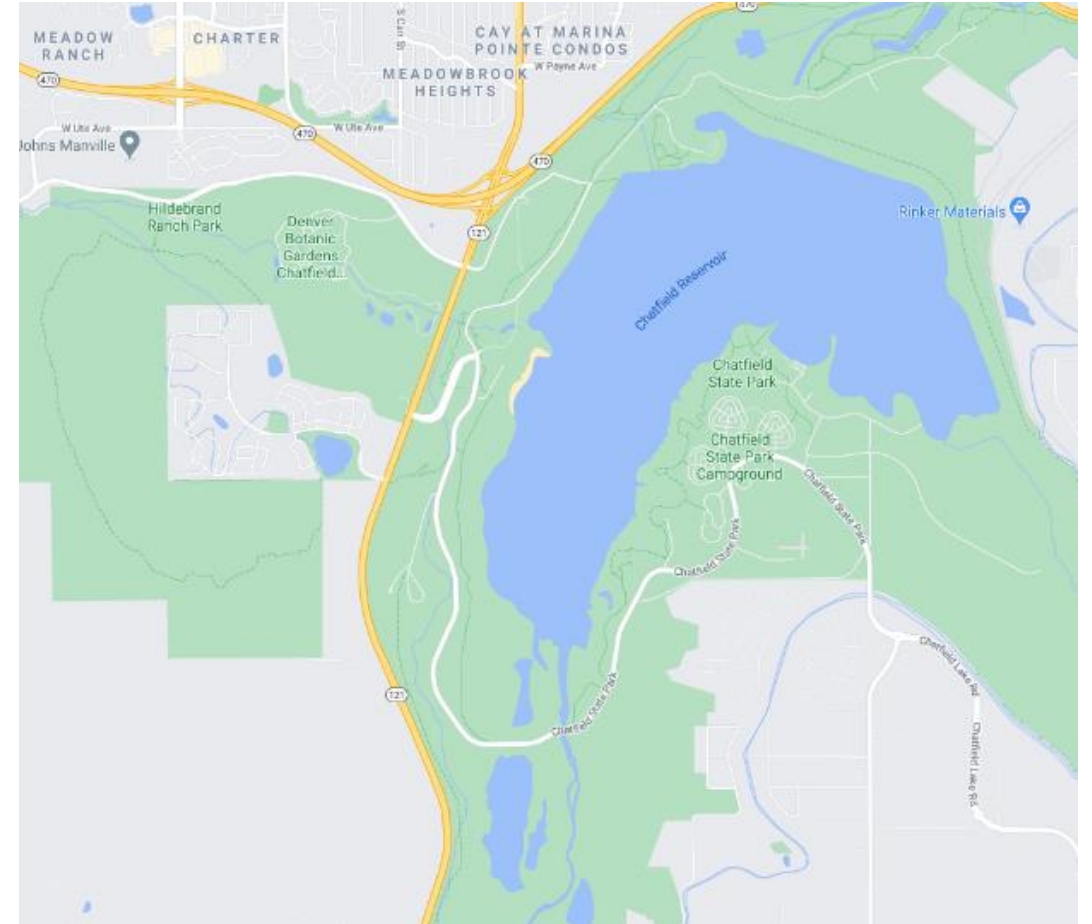


Bridge over South Platte River within Chatfield State Park

SPOT WATER LEASE

KEY TERMS

- Current Chatfield storage is approximately 1,500 AF
- Central will be leasing up to 800 acre-feet of excess reusable supplies stored in Chatfield, as available
- Term between October 16, 2024 to December 31, 2024
- Castle Rock will coordinate book-over with Colorado Division of Water Resources



Location of Chatfield Reservoir in Douglas County

SPOT WATER LEASE

BUDGET AND RECOMMENDATIONS

PAYMENTS FROM CENTRAL

- \$110 per acre-foot
- Revenue up to \$88,000

RECOMMENDATIONS

- Water Commission
- CR Water Staff



Town's reusable effluent water entering East Plum Creek



I MOVE TO APPROVE RESOLUTION NO. 2024-109 AS INTRODUCED BY TITLE

I MOVE TO APPROVE RESOLUTION NO. 2024-110 AS INTRODUCED BY TITLE

I MOVE TO APPROVE RESOLUTION NO. 2024-111 AS INTRODUCED BY TITLE

*I MOVE TO APPROVE THE RESOLUTION AS INTRODUCED BY TITLE, WITH THE
FOLLOWING CONDITIONS: _____*

*"I MOVE TO CONTINUE THIS ITEM TO THE TOWN COUNCIL MEETING ON _____ DATE TO
ALLOW ADDITIONAL TIME TO: _____"*