

EAST PLUM CREEK TRAIL

ANNEXATION AND ZONING

TOWN COUNCIL
AUGUST 19, 2025

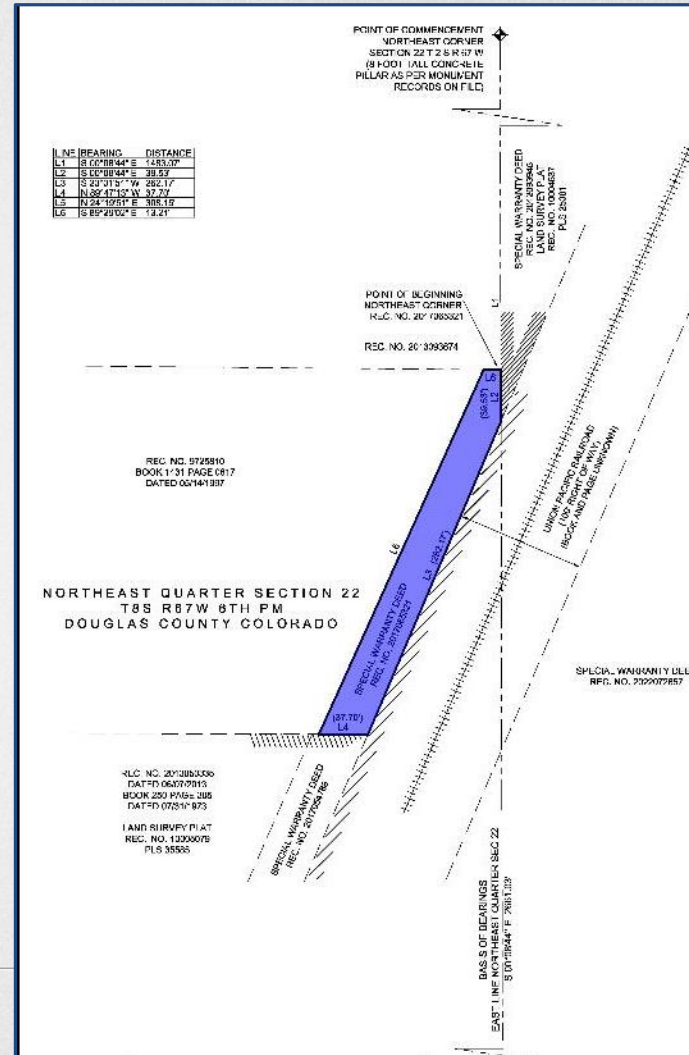


VICINITY MAP

- .21 acre parcel
- Aprox. 1/3 mile north of Crystal Valley Parkway, east of I-25/Frontage Rd



- Incorporate Town-owned parcels
- Bring under Town jurisdiction for Code, Zoning and Police enforcement
- Eliminate conflict or redundancy in emergency response.



PROPOSED ZONING

Zone District	Purpose	Permitted Uses
Public Land 2 (PL-2)	The PL-2 District is intended primarily for municipally owned property and public uses (CRMC 17.30).	<ul style="list-style-type: none">• Open space• Wildlife sanctuary• Trails and associated facilities

ANALYSIS

- Complies with Colorado Revised Statutes, Title 31, and specifically the Municipal Annexation Act of 1965
- Complies with Town of Castle Rock Municipal Code, Title 17 and Title 20
- Meets objectives of the Town of Castle Rock Vision and 2030 Comprehensive Master Plan

RECOMMENDATION

Staff recommends approval of the Annexation.

Planning Commission recommended approval of the PL-2 Zoning, as proposed, by a vote of 7-0.

PROPOSED MOTIONS

Annexation

“I move to approve the Annexation Ordinance, as introduced by title.”

Zoning

“I move to approve the Zoning Ordinance, as introduced by title.”

ALTERNATIVE MOTIONS

Approval with Conditions

“I move to approve the Annexation Ordinance, with the following conditions:”

[list conditions]

“I move to approve the Zoning Ordinance, with the following conditions:”

[list conditions]

Continue item to next hearing (need more information to make decision)

“I move to continue this Annexation item to the Town Council meeting on [date], at [time].”

“I move to continue this Zoning item to the Town Council meeting on [date], at [time].”

QUESTIONS?

