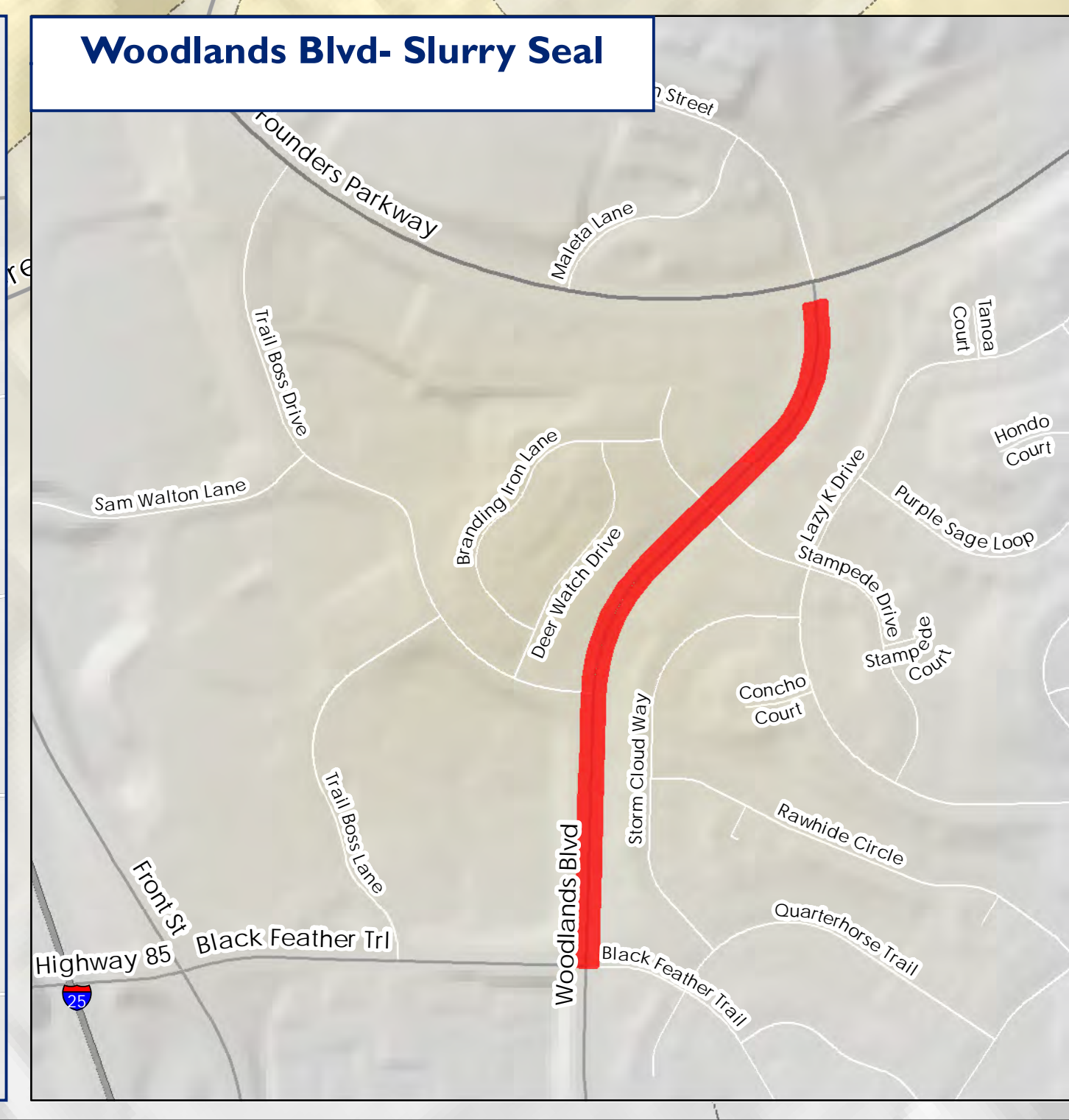
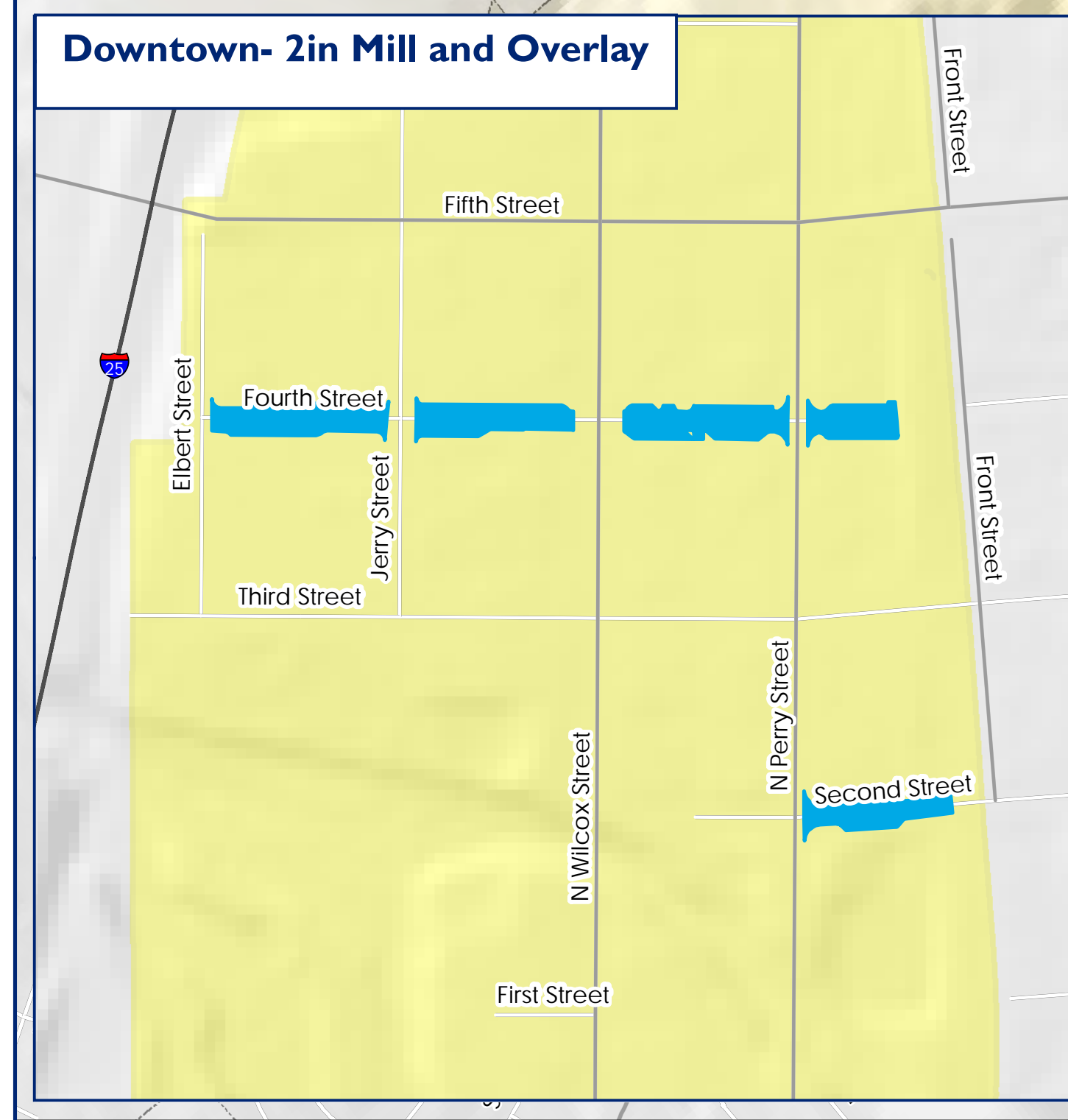
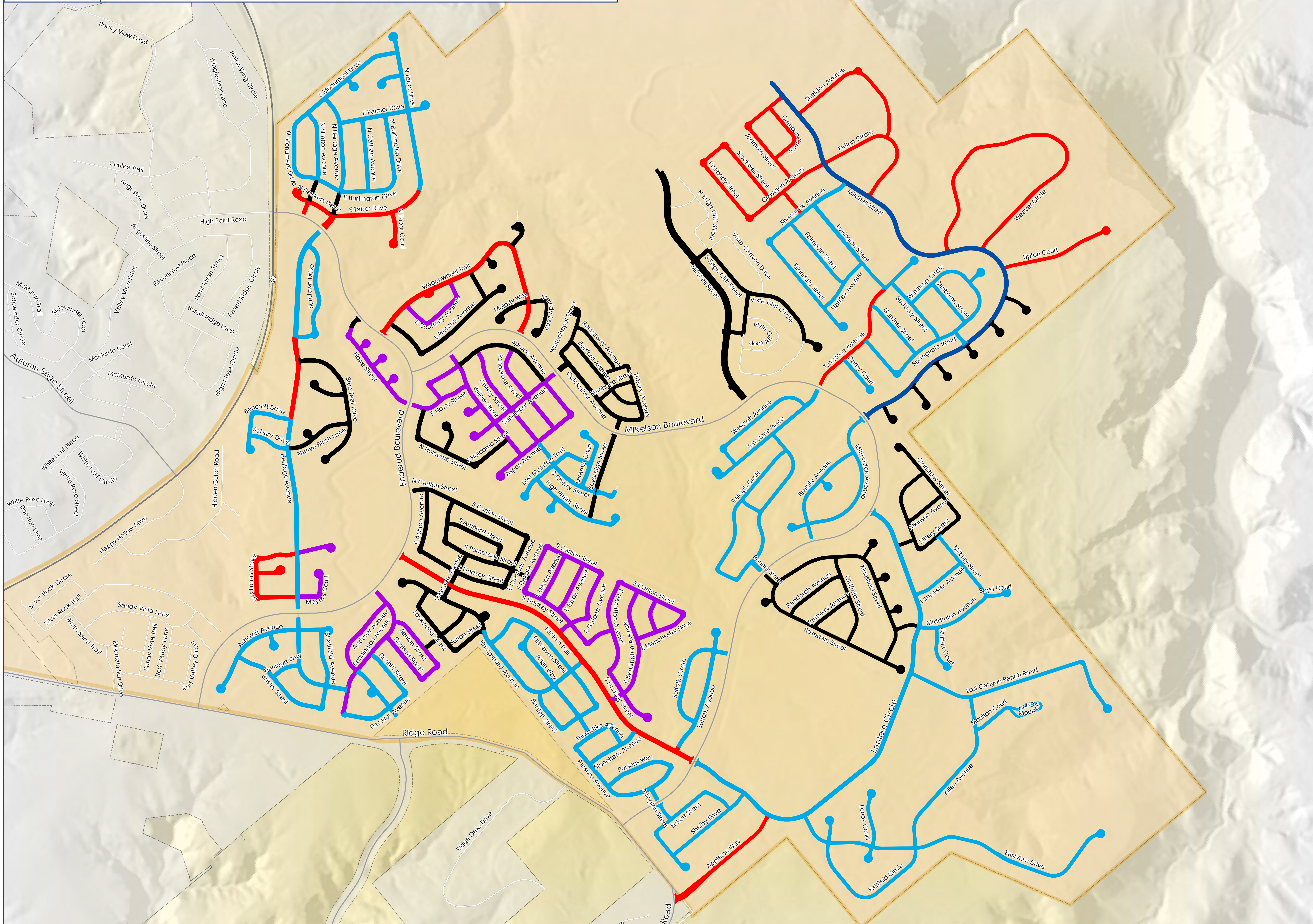


PAVEMENT MAINTENANCE PROGRAM

2023 Treatment Plan for PMP East, Downtown and Primary Roadways



PMP South, Downtown and Primary Pavement Treatments

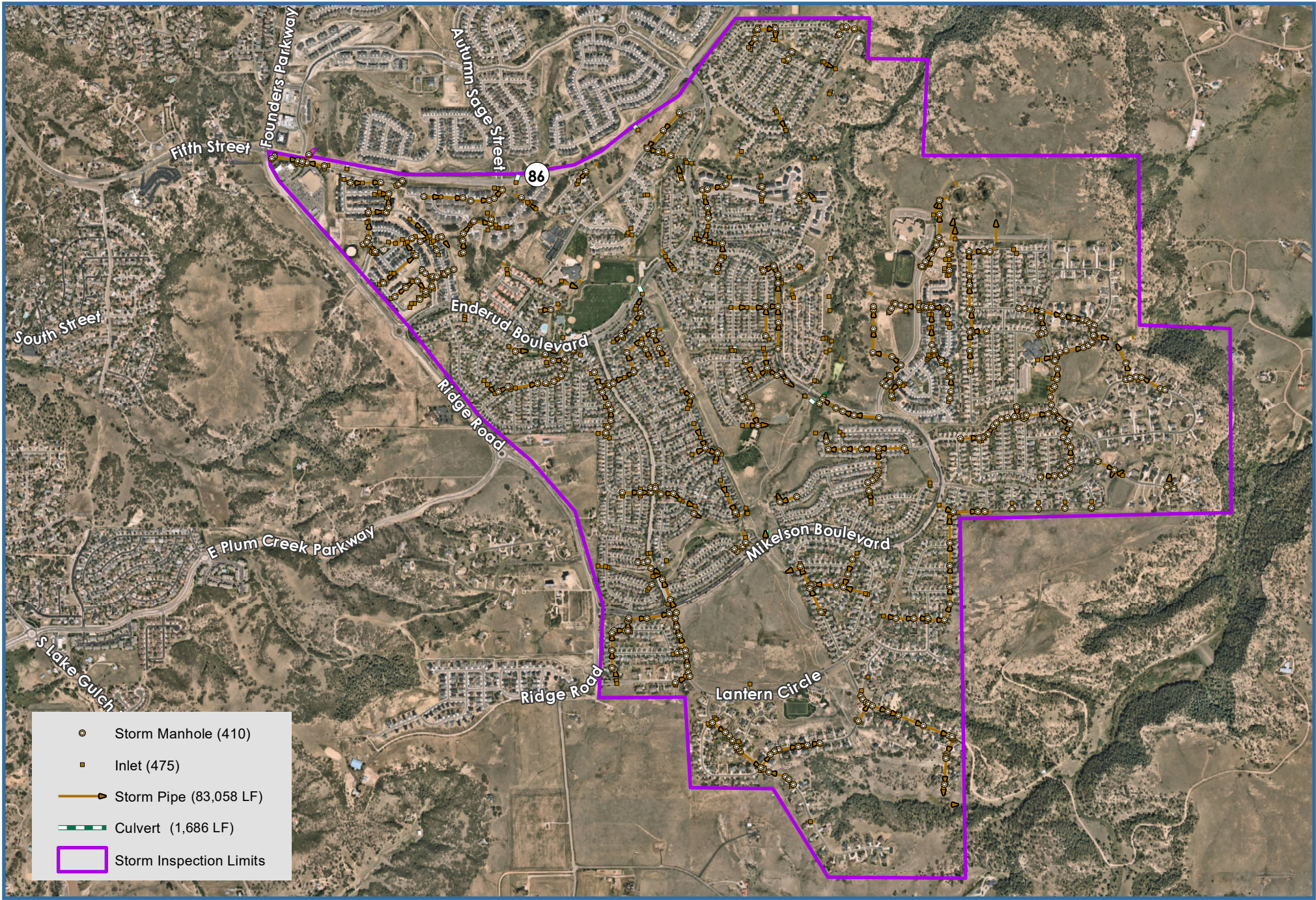
- 2in Mill and Overlay- 301,550 Sq Yds (37 Ln Mi)
- 3in Mill and Overlay- 23,292 Sq Yds (2.4 Ln Mi)
- Asphalt Slurry Seal- 114,826 Sq Yds (15 Ln Mi)
- Crack Seal- 150,790 Sq Yds (17 Ln Mi)
- Roadway Reconstruction- 112,841 Sq Yd (12.5 Ln Mi)






PMP East Region

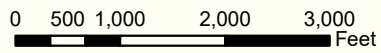
- Town Limits

0 0.25 0.5 Miles

Disclaimer: The data presented has been compiled from various sources, each of which introduces varying degrees of inaccuracies or inconsistencies. Such discrepancies in data are inherent and in supplying this product to the public the Town of Castle Rock assumes no liability for its use or accuracy. For questions or comments regarding omissions, corrections, or updates please visit CRGov.com/directory for contact information.
Copyright 2022, Town of Castle Rock.



-  Storm Manhole (410)
-  Inlet (475)
-  Storm Pipe (83,058 LF)
-  Culvert (1,686 LF)
-  Storm Inspection Limits

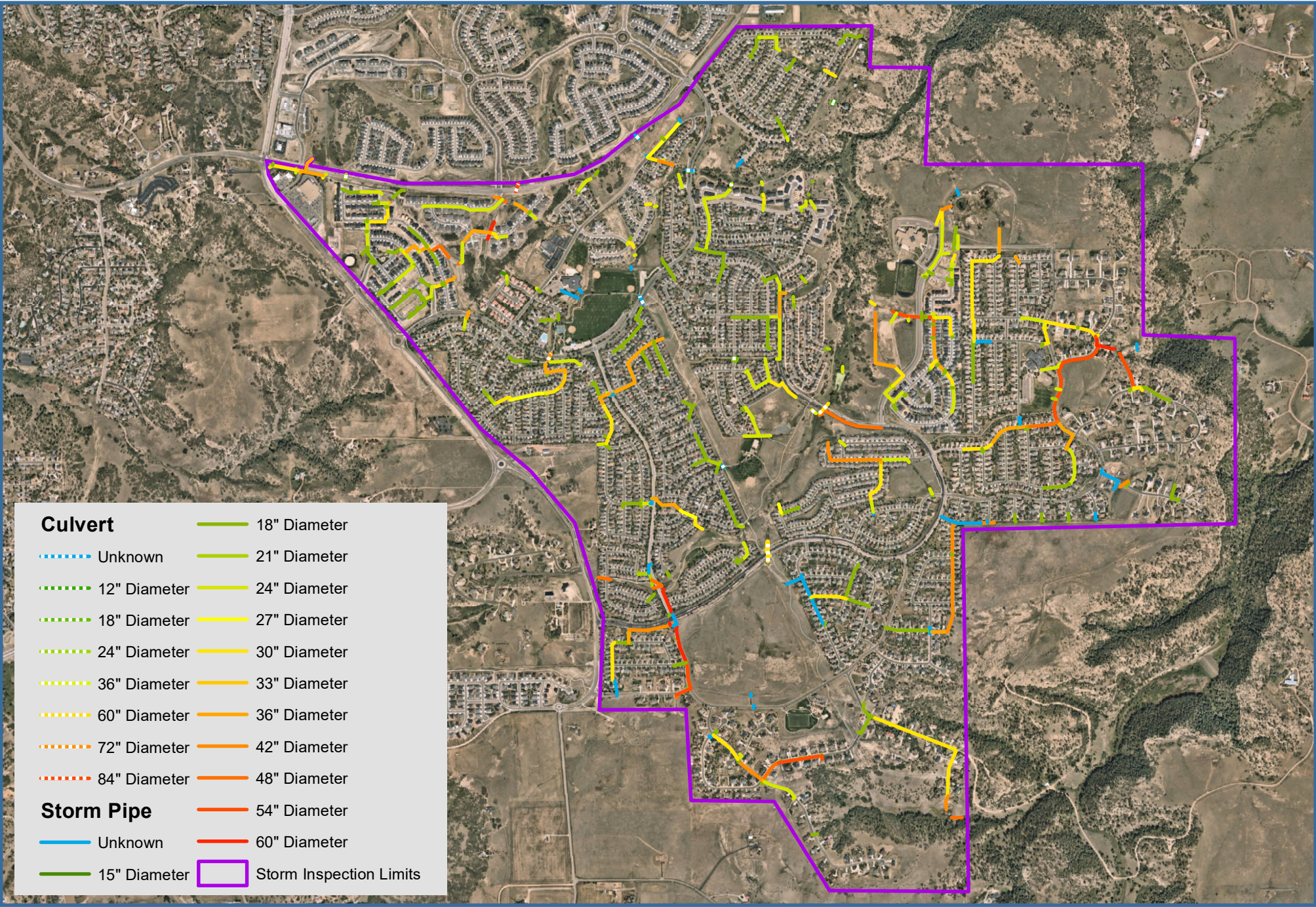


Date: 10/20/2022 1 inch = 1,833 feet

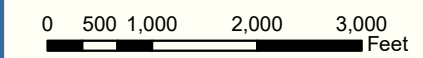


Disclaimer: The data presented has been compiled from various sources, each of which introduces varying degrees of inaccuracies or inconsistencies. Such discrepancies in data are inherent and in supplying this product the Town of Castle Rock assumes no liability for its use or accuracy. Questions or comments regarding the cartographic composition of this map including, but not limited to, errors, omissions, corrections, and/or updates, should be directed to the Utilities Department, Town of Castle Rock, (720) 733-6087. Copyright 2022, Town of Castle Rock Utilities Mapping.





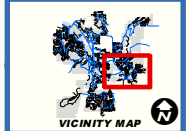
Culvert	
	18" Diameter
	Unknown
	12" Diameter
	18" Diameter
	24" Diameter
	36" Diameter
	60" Diameter
	72" Diameter
	84" Diameter
	21" Diameter
	24" Diameter
	27" Diameter
	30" Diameter
	33" Diameter
	36" Diameter
	42" Diameter
	48" Diameter
	Unknown
	15" Diameter
	Storm Inspection Limits

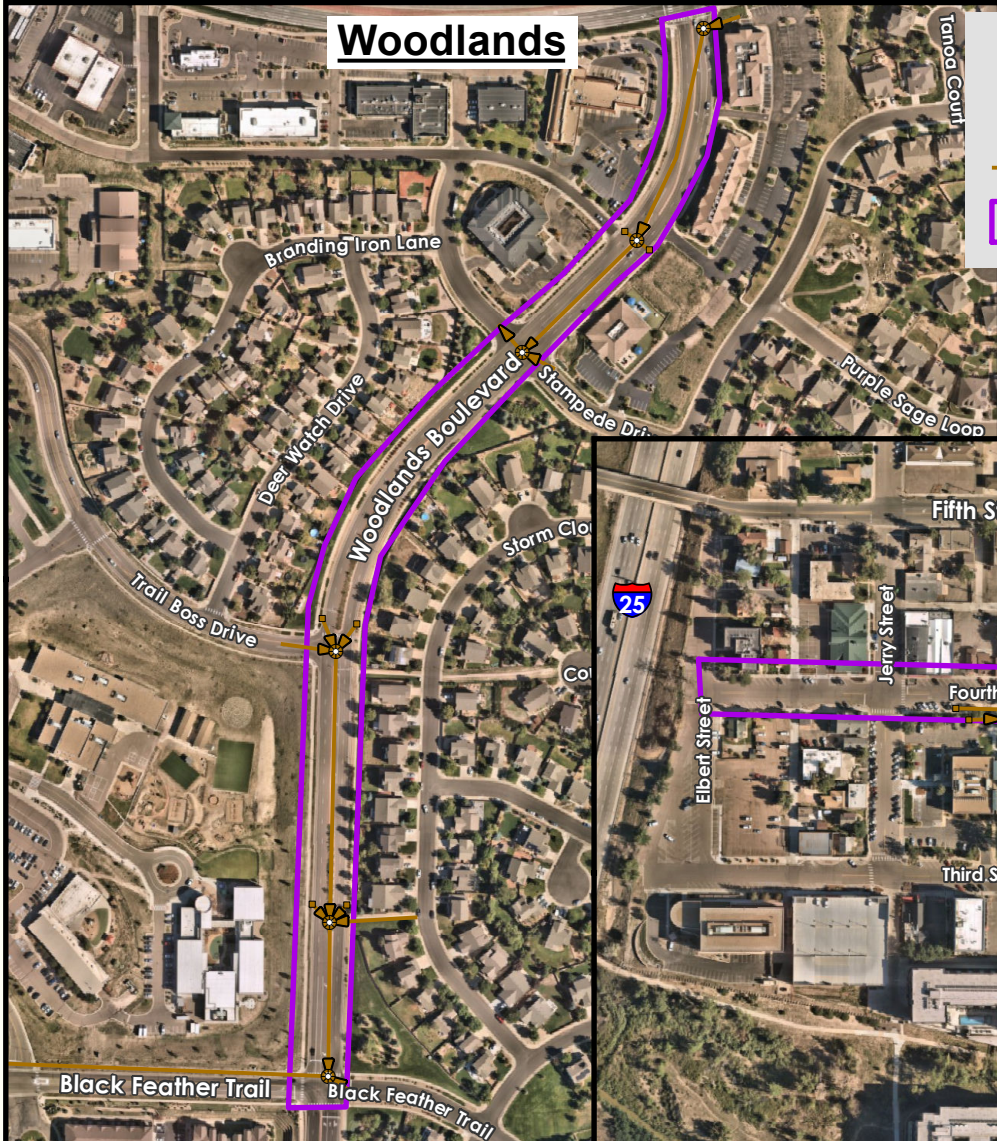


Date: 10/19/2022 1 inch = 1,833 feet



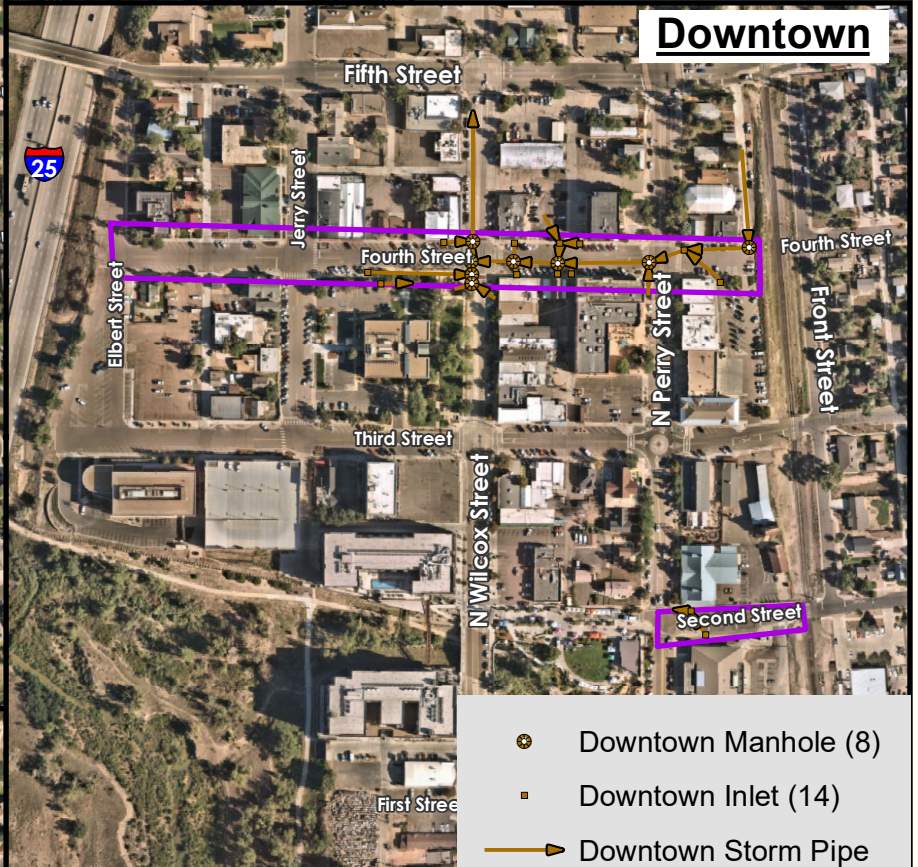
Disclaimer: The data presented has been compiled from various sources, each of which introduces varying degrees of inaccuracies or inconsistencies. Such discrepancies in data are inherent and in supplying this product the Town of Castle Rock assumes no liability for its use or accuracy. Questions or comments regarding the cartographic composition of this map including, but not limited to, errors, omissions, corrections, and/or updates, should be directed to the Utilities Department, Town of Castle Rock, (720) 733-6087. Copyright 2022, Town of Castle Rock Utilities Mapping.





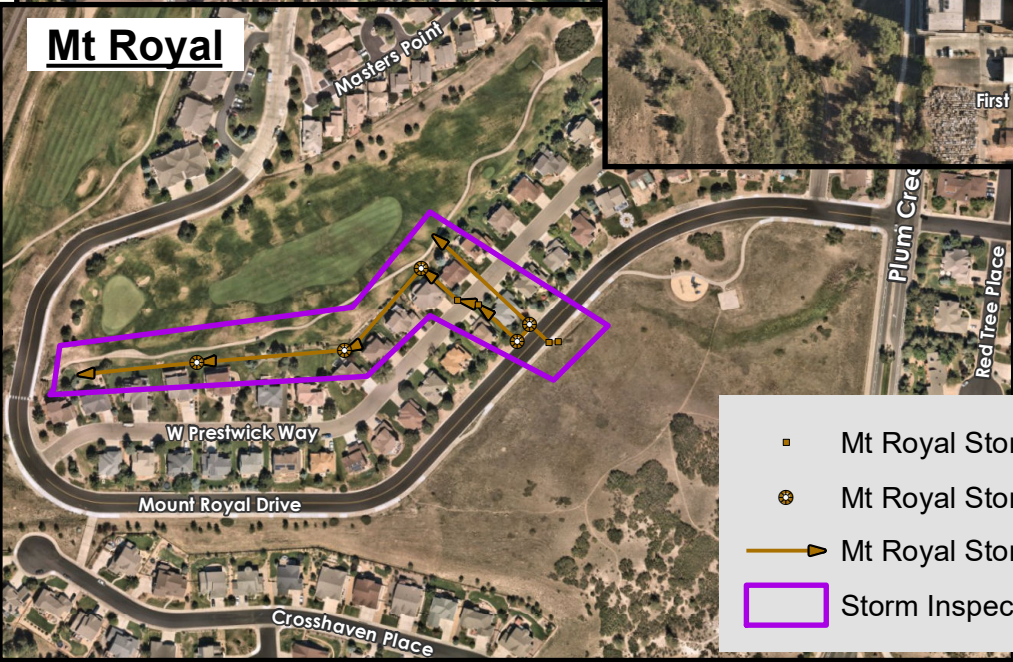
Woodlands

- ⊙ Woodlands Manhole (6)
- Woodlands Inlet (6)
- Woodlands Storm Pipe (3,538 LF)
- ▭ Storm Inspection Limits



Downtown

- ⊙ Downtown Manhole (8)
- Downtown Inlet (14)
- Downtown Storm Pipe (2,131 LF)
- ▭ Storm Inspection Limits



Mt Royal

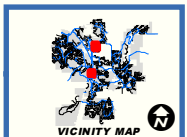
- Mt Royal Storm Inlet (4)
- ⊙ Mt Royal Storm Manhole (5)
- Mt Royal Storm Pipe (1,445 LF)
- ▭ Storm Inspection Limits

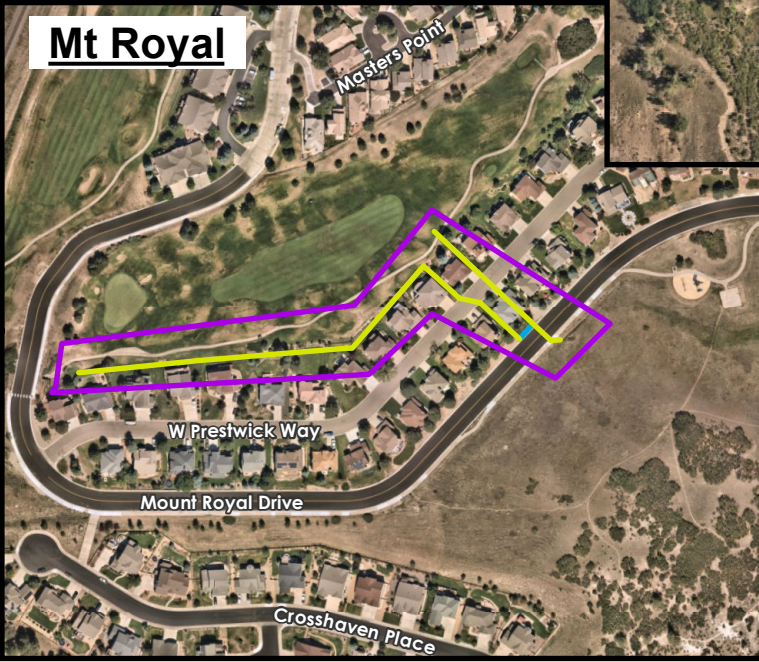
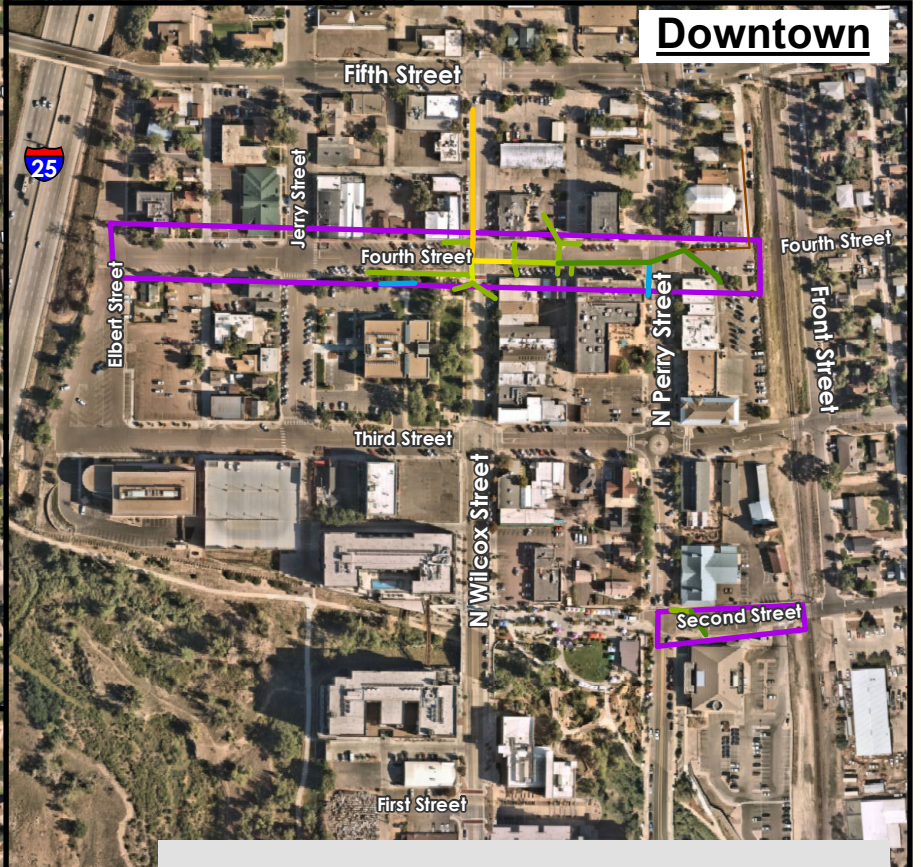
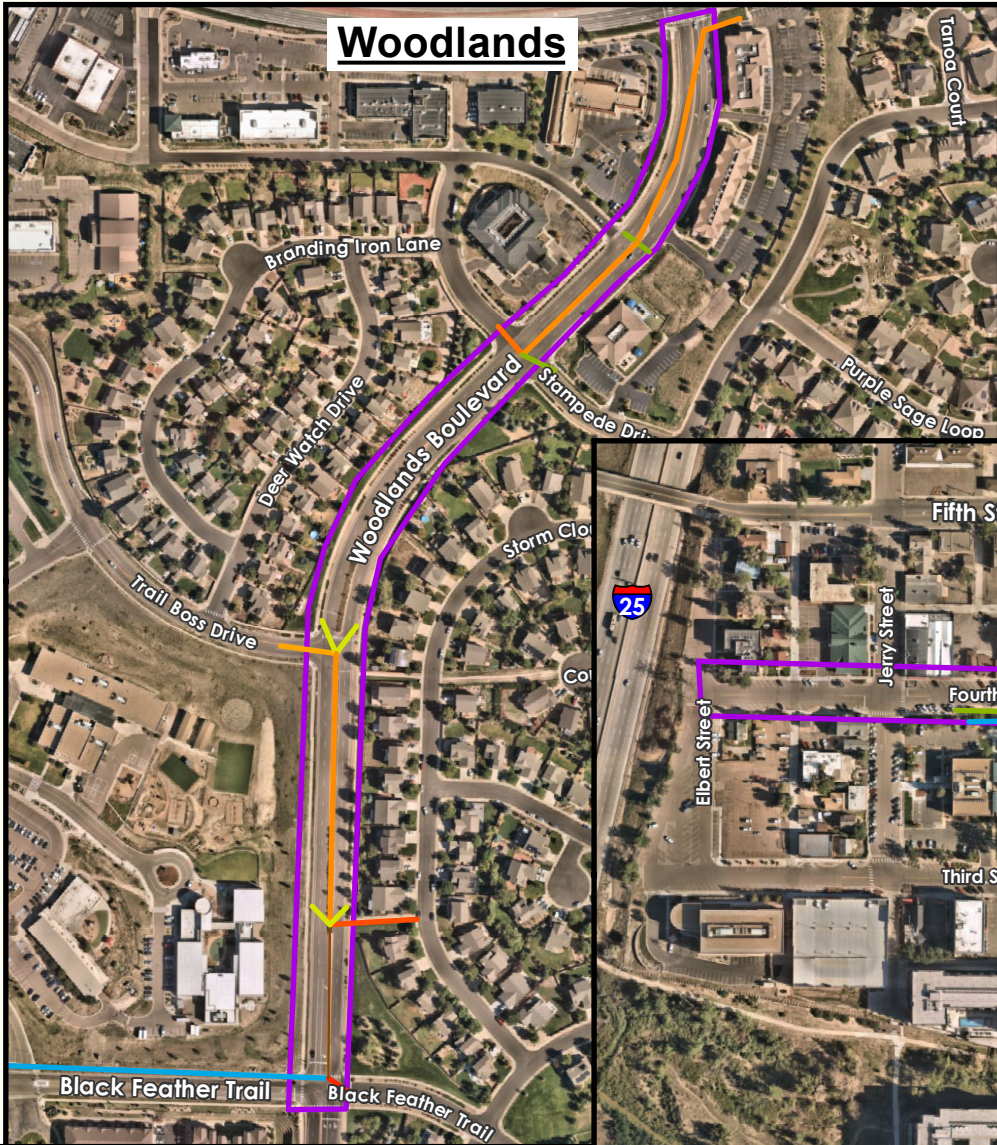


Date: 10/19/2022 1 inch = 400 feet



Disclaimer: The data presented has been compiled from various sources, each of which introduces varying degrees of inaccuracies or inconsistencies. Such discrepancies in data are inherent and in supplying this product the Town of Castle Rock assumes no liability for its use or accuracy. Questions or comments regarding the cartographic composition of this map, including, but not limited to, errors, omissions, corrections, and/or updates, should be directed to the Utilities Department, Town of Castle Rock, (720) 733-6087. Copyright 2022, Town of Castle Rock Utilities Mapping.





Diameter	
	27" Diameter
	Unknown
	6" Diameter
	15" Diameter
	16" Diameter
	18" Diameter
	21" Diameter
	24" Diameter
	30" Diameter
	33" Diameter
	36" Diameter
	42" Diameter
	48" Diameter
	54" Diameter
	60" Diameter
	Storm Inspection Limits



0 100 200 400 600 Feet
 Date: 10/20/2022 1 inch = 400 feet



Disclaimer: The data presented has been compiled from various sources, each of which introduces varying degrees of inaccuracies or inconsistencies. Such discrepancies in data are inherent and in supplying this product the Town of Castle Rock assumes no liability for its use or accuracy. Questions or comments regarding the cartographic composition of this map including, but not limited to, errors, omissions, corrections, and/or updates, should be directed to the Utilities Department, Town of Castle Rock, (720) 733-6087. Copyright 2022, Town of Castle Rock Utilities Mapping.

