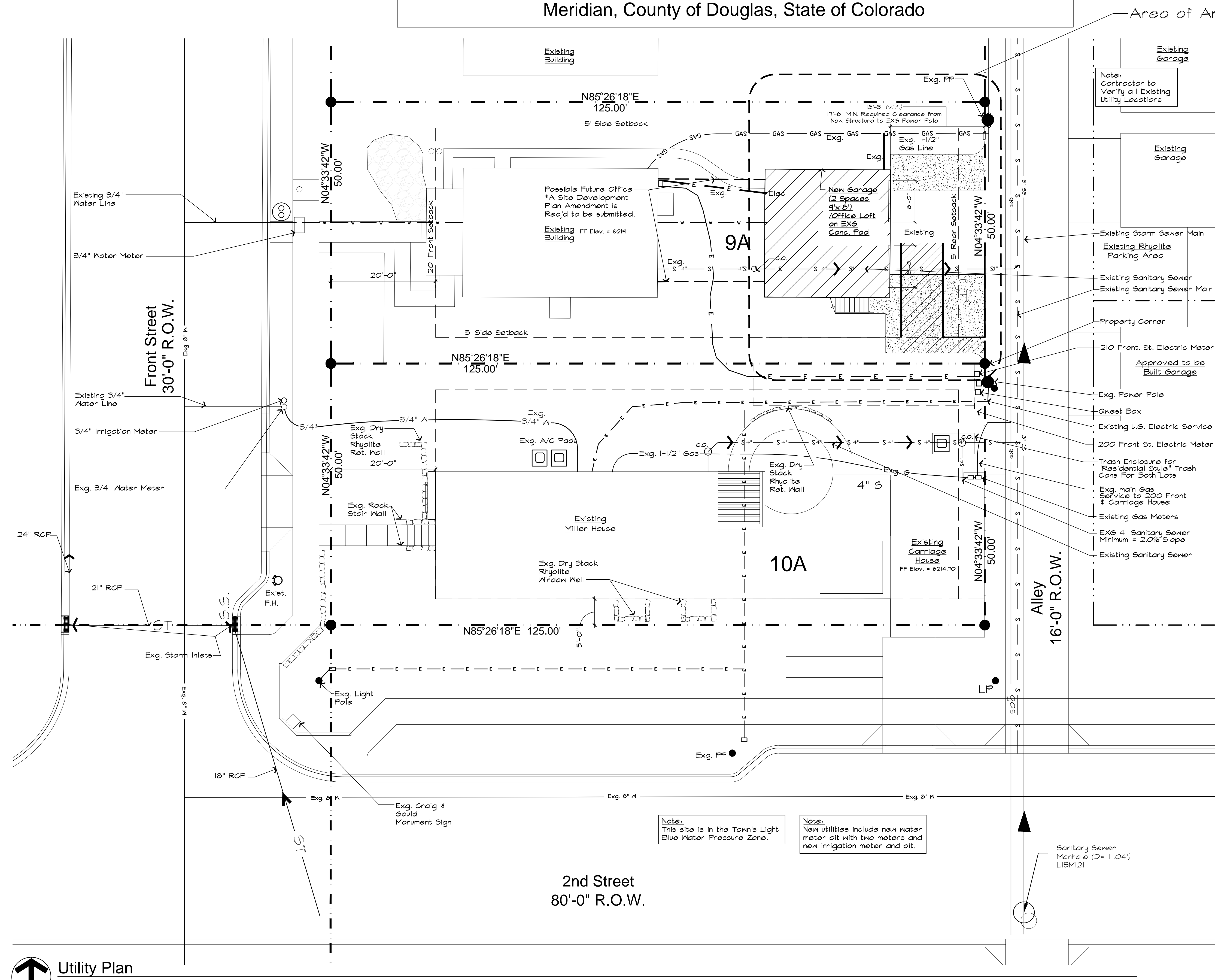


P.S. MILLER HOUSE
Site Development Plan, Amendment No. 1
(An Amendment to the P.S. Miller House Final PD Site Plan)
Lot 9A, Block 13, Craig and Gould's Addition to Castle Rock, 11th Amendment
Located in Section 11, Township 8 South, Range 67 West of the 6th Principal
Meridian, County of Douglas, State of Colorado



Legend

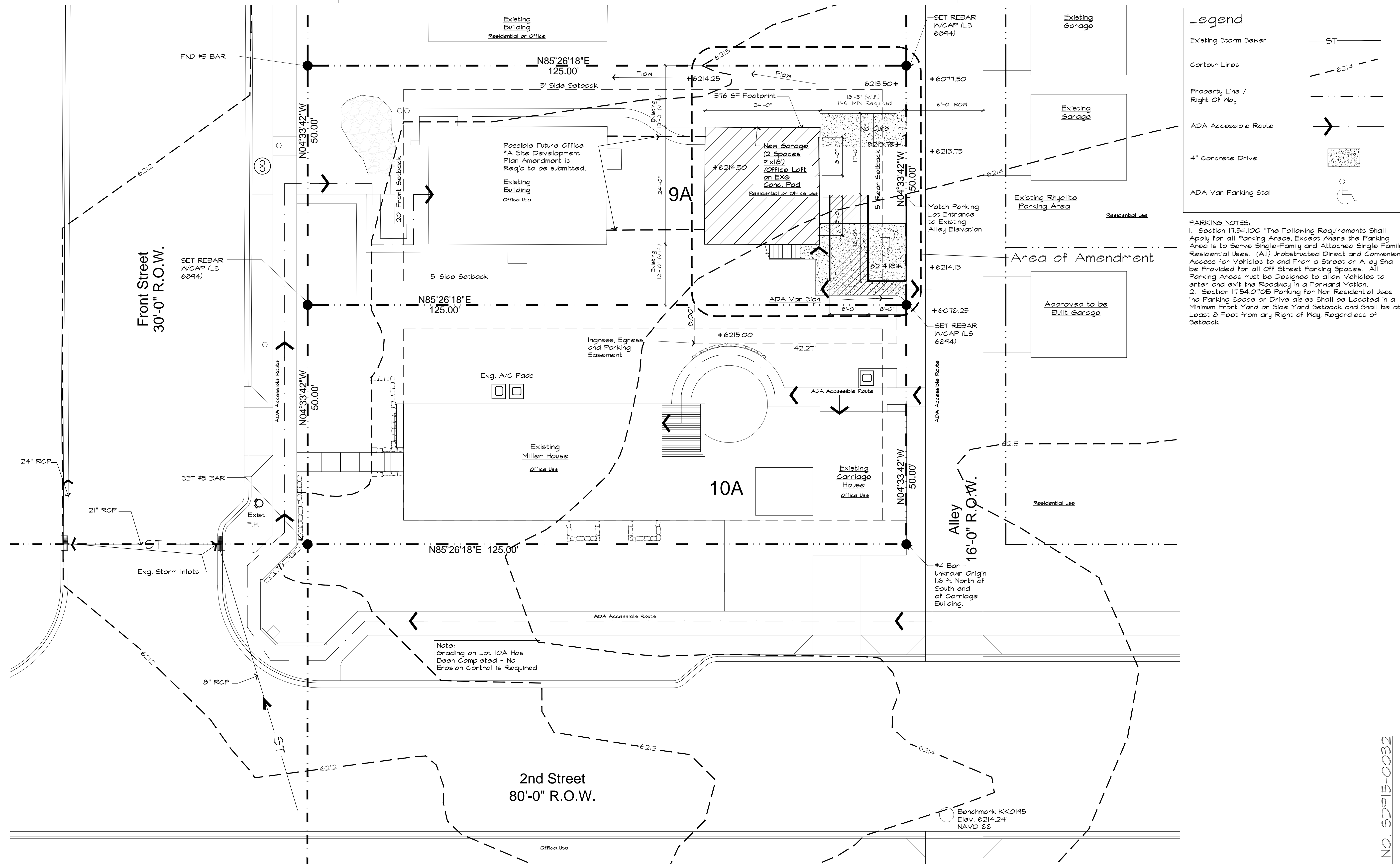
Existing Storm Sewer	ST
Existing Electrical	E
Existing Sanitary Sewer	S
Existing Gas	GAS
Water	3/4" W
Property Line / Right Of Way	- - - - -
4" Concrete Drive	[Pattern]
ADA Van Parking Stall	[Symbol]

UTILITY NOTES:
1. All proposed easements must be recorded prior to issuance of construction permits.
2. The minimum separation between waterlines, sanitary sewer and storm sewer lines is 10 feet.
3. The minimum separation between water service lines is 5 feet.
4. This site is located within the Town of Castle Rock light blue water pressure zone.

Utility Plan
1" = 10' - 0"

PROJECT NO. SDPI15-0032

P.S. MILLER HOUSE
Site Development Plan, Amendment No. 1
(An Amendment to the P.S. Miller House Final PD Site Plan)
Lot 9A, Block 13, Craig and Gould's Addition to Castle Rock, 11th Amendment
Located in Section 11, Township 8 South, Range 67 West of the 6th Principal
Meridian, County of Douglas, State of Colorado



Legend

Existing Storm Sewer — ST —

Contour Lines — 6214 —

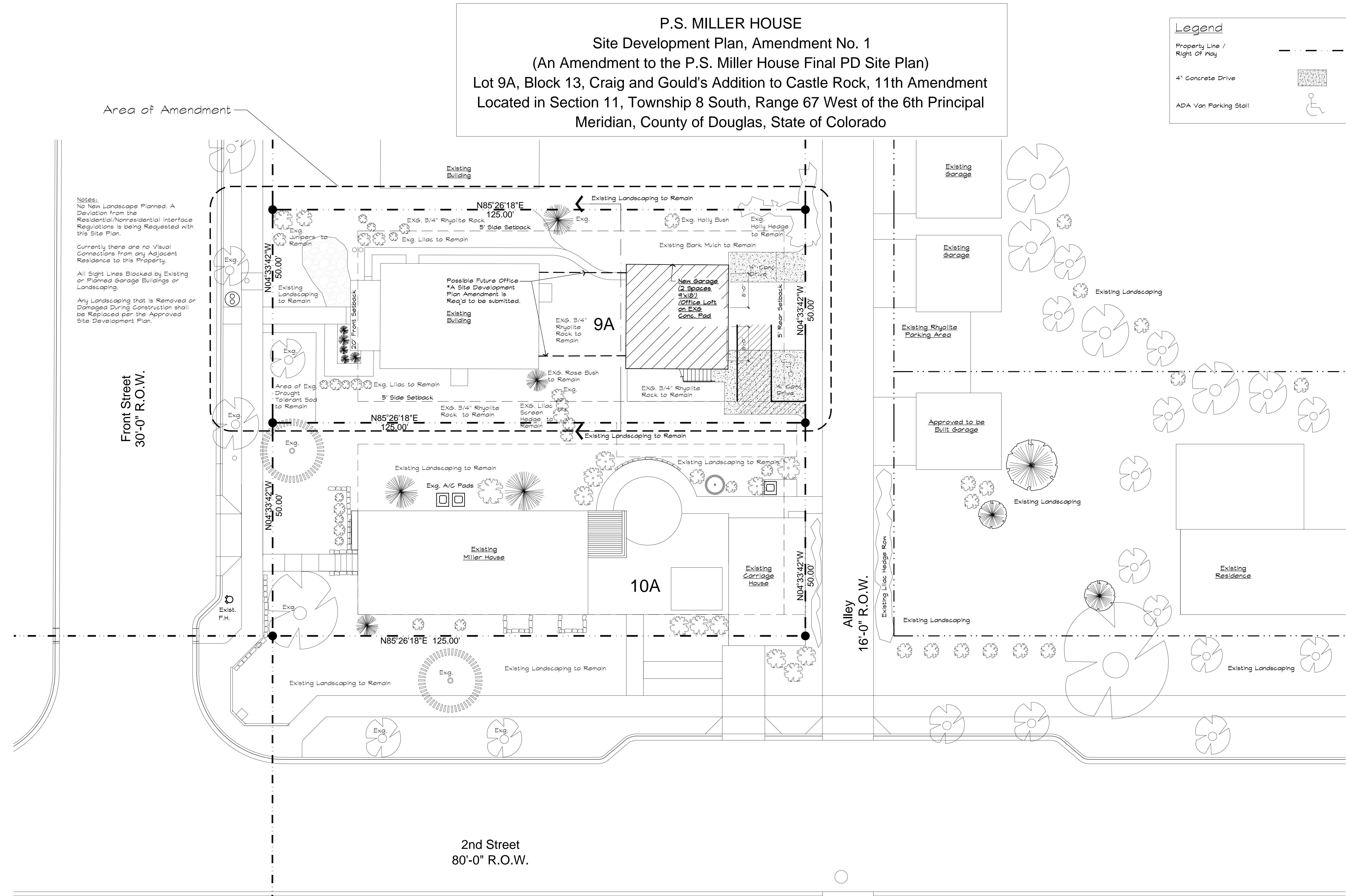
Property Line / Right Of Way — - - - -

ADA Accessible Route —>—

4" Concrete Drive [Pattern]

ADA Van Parking Stall [Symbol]

PARKING NOTES:
1. Section 17.54.100 "The Following Requirements Shall Apply for all Parking Areas, Except Where the Parking Area is to Serve Single-Family and Attached Single Family Residential Uses. (A.) Unobstructed Direct and Convenient Access for Vehicles to and From a Street or Alley Shall be Provided for all Off Street Parking Spaces. All Parking Areas must be Designed to allow Vehicles to enter and exit the Roadway in a Forward Motion.
2. Section 17.54.070B Parking for Non Residential Uses "no Parking Space or Drive aisles Shall be Located in a Minimum Front Yard or Side Yard Setback and Shall be at Least 8 Feet from any Right of Way, Regardless of Setback"



Legend

Property Line / Right Of Way

4" Concrete Drive

ADA Van Parking Stall

P.S. MILLER HOUSE
Site Development Plan, Amendment No. 1
(An Amendment to the P.S. Miller House Final PD Site Plan)
Lot 9A, Block 13, Craig and Gould's Addition to Castle Rock, 11th Amendment
Located in Section 11, Township 8 South, Range 67 West of the 6th Principal Meridian, County of Douglas, State of Colorado

Project #: 0820
Date: 9-17-15
Drawn By: RGB
Checked By: DLH
Scale: As Noted
Revisions:

Sheet #
4
Landscape Plan
Of: 6

DLH Architecture
Planning, Architecture, Consulting and Construction Phone (303) 885-5273
DLH Architecture is a Limited Liability Corporation Established in 1992

PROJECT NO. SDPI15-0032

Your Store:
N Westminster, CO

Your Store: Westminster, CO



Portfolio Ellicott 13.12-in H Galvanized Dark Sky Outdoor Wall Light

Item #: 337508 | Model #: FS130125-30

★★★★★

\$41.48

Fixture Height (inches)

Light bulb(s) not included

FREE Store Pickup

Your order can be available for pickup in Lowe's Of N Westminster, CO today.

Lowe's Truck Delivery

Your order will be ready for delivery to you from your selected store.

Parcel Shipping

Sent by carriers like UPS, FedEx, USPS, etc.

Portfolio Ellicott 13.12-in H Galvanized Dark Sky Outdoor Wall Light

\$41.48

Tweet

0

0

2

email

- Description
- Ellicott 13.12-in H Galvanized Dark Sky Outdoor Wall Light
- Galvanized steel fixture is weather-resistant and sturdy
 - 60-watt medium base incandescent bulb required (not included)
 - 10.5-in W x 13.12-in H x 12.02-in D
 - 3-year base warranty on the parts and labor gives you peace of mind
 - ETL safety listing demonstrates this product has met minimum requirements of widely accepted product safety standards
 - Hardware included for easy setup
 - Lantern style offers a traditional look
 - Dark sky design minimizes upward glare, preventing light pollution
 - Ideal for errandway lighting

Specifications			
Type	Outdoor wall-mount light	Glass Style	No glass
Motion Activated	No	Power Source	Hardwired
Manufacturer Color/Finish	Galvanized	Style	Traditional
Fixture Height (inches)	13.12	ENERGY STAR Qualified	No
Fixture Width (inches)	10.5	Package Quantity	1
Fixture Depth (inches)	12.02	Material	Steel
Weather Resistant/Weatherproof	Weather-resistant	Color/Finish Family	Silver
Maximum Bulb Wattage	60	Dark Sky	Yes
Bulbs Included	No	Collection Name	Ellicott
Number of Bulbs Required	1	Light Bulb Base Type	Medium base (E-26)
UL Safety Listing	No	Recommended Light Bulb Shape	A19
CSA Safety Listing	No	Size Classification	Large (6-14 in and above)
ETL Safety Listing	Yes	Damp Rated	No
Hardware Included	Yes	Bulb Type	Incandescent
Glass Color	No glass		

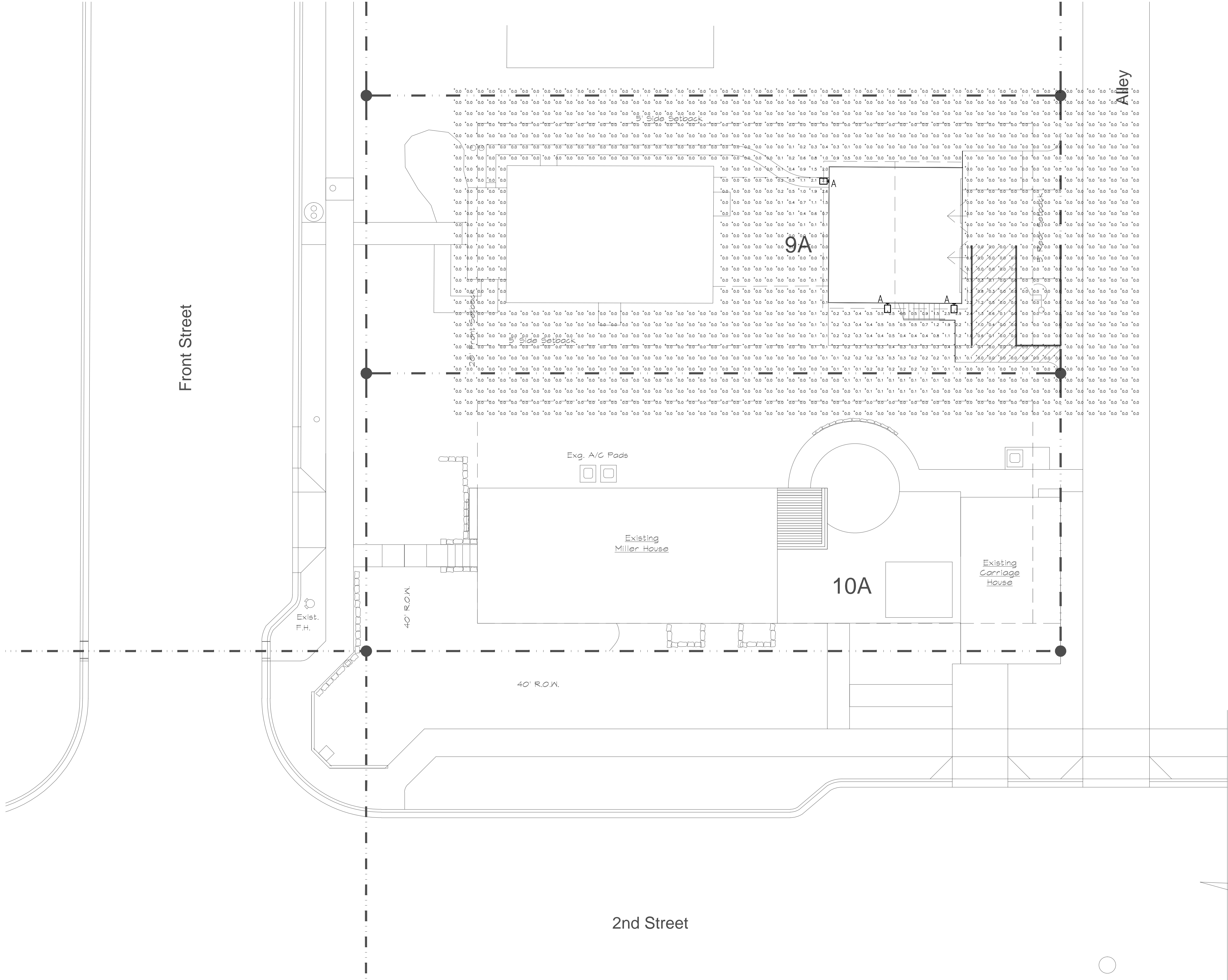
http://www.lowes.com/pd_337508-43501-FS130125-30___?productId=50106276&pl=1&... 9/18/2015

★★ BULB TO BE RECESSED (DOES NOT EXTEND BELOW RIM) TO ENSURE FULL CUT-OFF

Type	Description	Catalog Number	Lamp	Lumens	LLF	Quantity	Mounting
A	Decorative Entry Light	Portfolio Ellicott 13.12 W Galv. Darksky	A1-LED	800	1	3	7' AFG ★
★ AFG = Above Finish Grade FIXTURE CONTROL - PHOTOCELL ON, TIME SWITCH OFF SET TIME SWITCH 'OFF' @ 2 HOURS AFTER CLOSING							
Numeric Summary							
	Label	Avg (fc)	Max (fc)	Min (fc)	Avg/Min	Max/Min	
	Grade	0.1	2.9	0	N/A	N/A	
	Property Line		0	0			

LIGHTING NOTE:
Lighting calculations do not include public street/alley lighting.
Calculations based on building lighting (Wall Fixtures) only.
Lighting calc's based on 3 wall lights.
The following lighting types are prohibited:
Forward Throw (Type IV) distribution, pole-mounted lights aimed at building facade, and unshielded wall packs.

P.S. MILLER HOUSE
Site Development Plan, Amendment No. 1
(An Amendment to the P.S. Miller House Final PD Site Plan)
Lot 9A, Block 13, Craig and Gould's Addition to Castle Rock, 11th Amendment
Located in Section 11, Township 8 South, Range 67 West of the 6th Principal Meridian, County of Douglas, State of Colorado



Photometric Site Plan

1" = 10' - 0"



P.S. MILLER HOUSE

Site Development Plan, Amendment No. 1

(An Amendment to the P.S. Miller House Final PD Site Plan)

Lot 9A, Block 13, Craig and Gould's Addition to Castle Rock, 11th Amendment
Located in Section 11, Township 8 South, Range 67 West of the 6th Principal Meridian, County of Douglas, State of Colorado

Project #: 0820
Date: 9-17-15
Drawn By: ICN
Checked By: JSH
Scale: As Noted
Revisions:

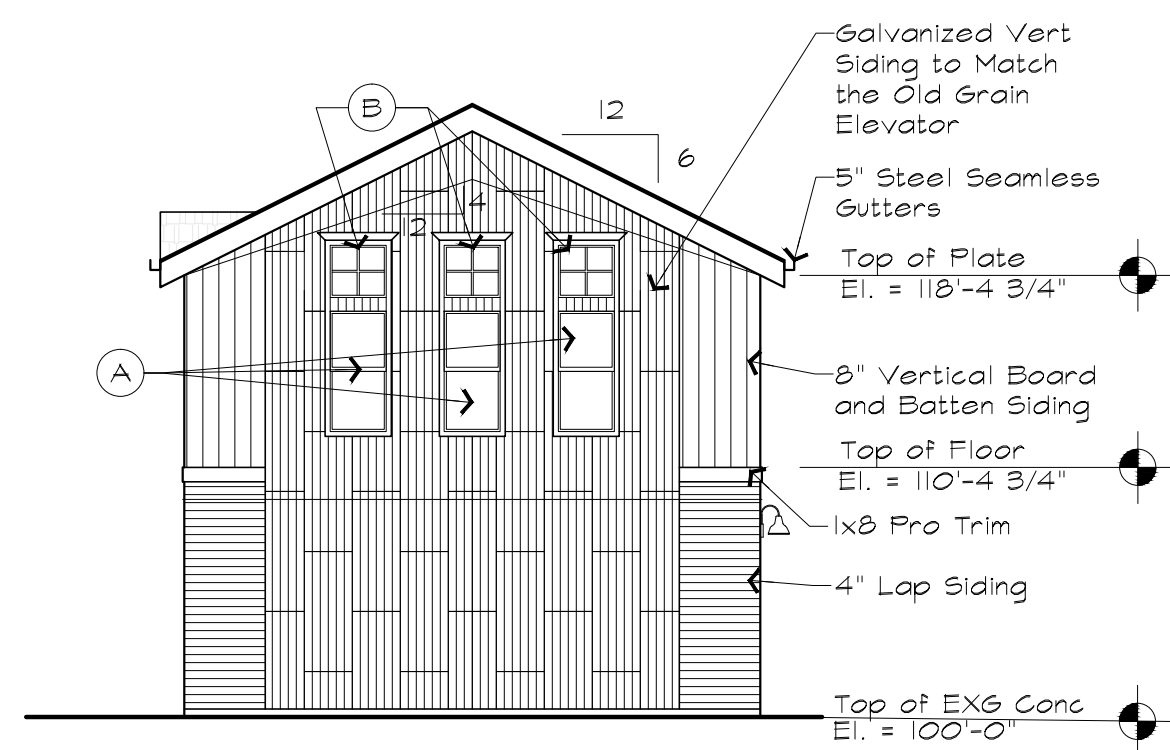
Sheet #

5

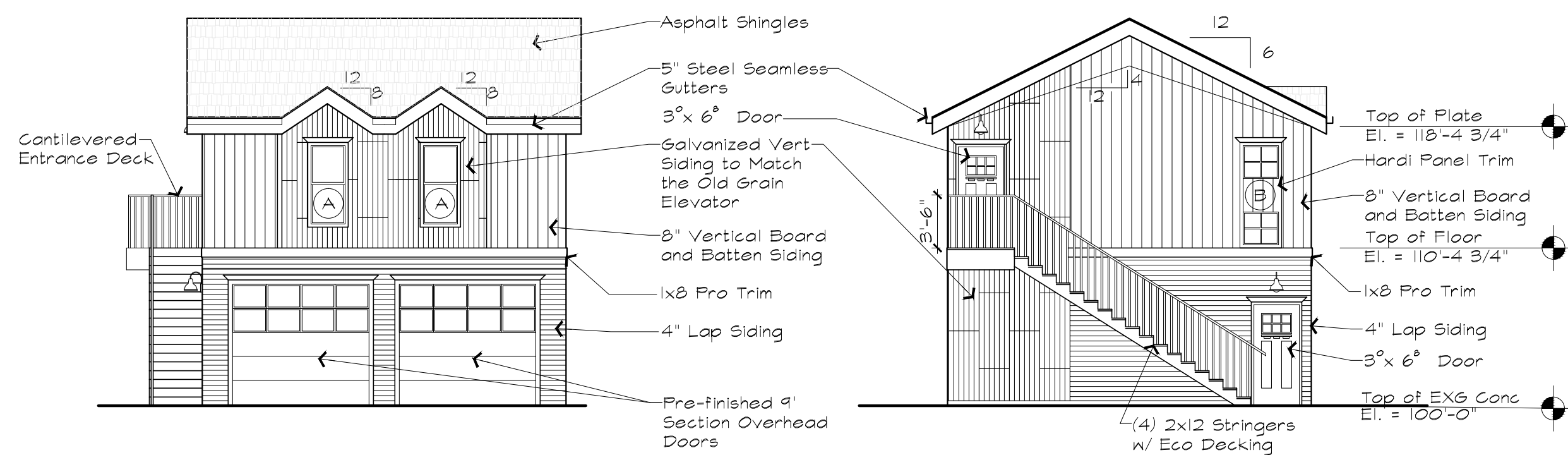
Photometric Site Plan

Of: 6

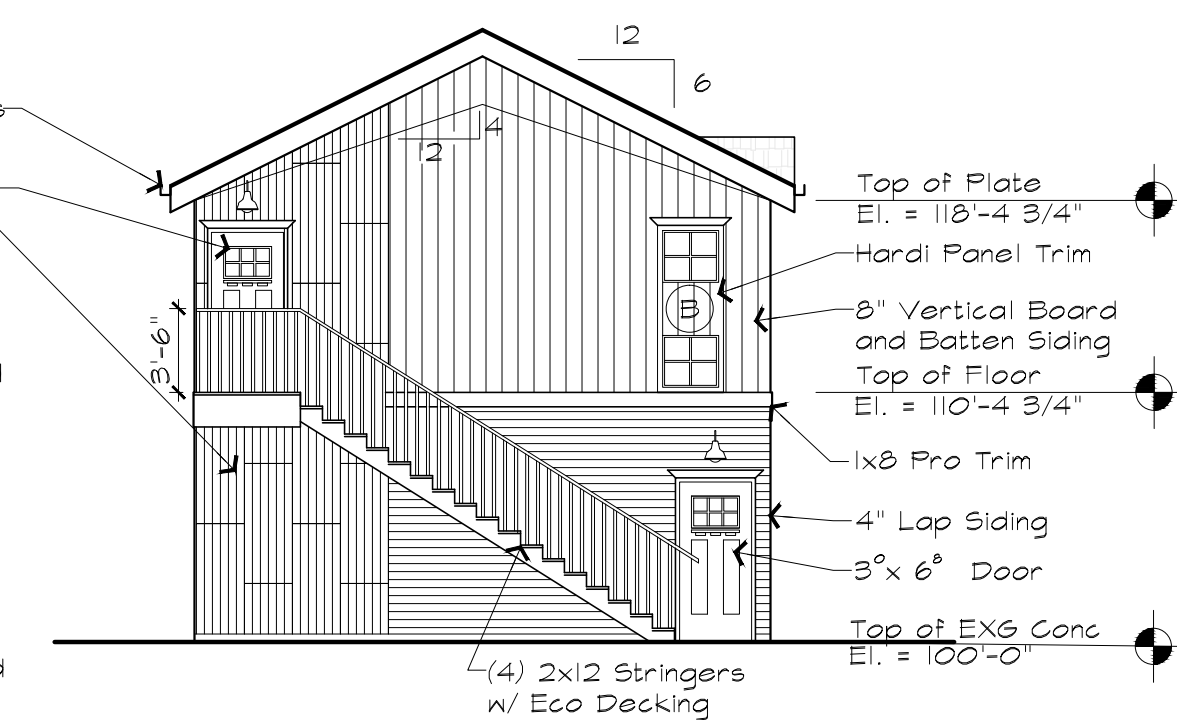
P.S. MILLER HOUSE
Site Development Plan, Amendment No. 1
(An Amendment to the P.S. Miller House Final PD Site Plan)
Lot 9A, Block 13, Craig and Gould's Addition to Castle Rock, 11th Amendment
Located in Section 11, Township 8 South, Range 67 West of the 6th Principal
Meridian, County of Douglas, State of Colorado



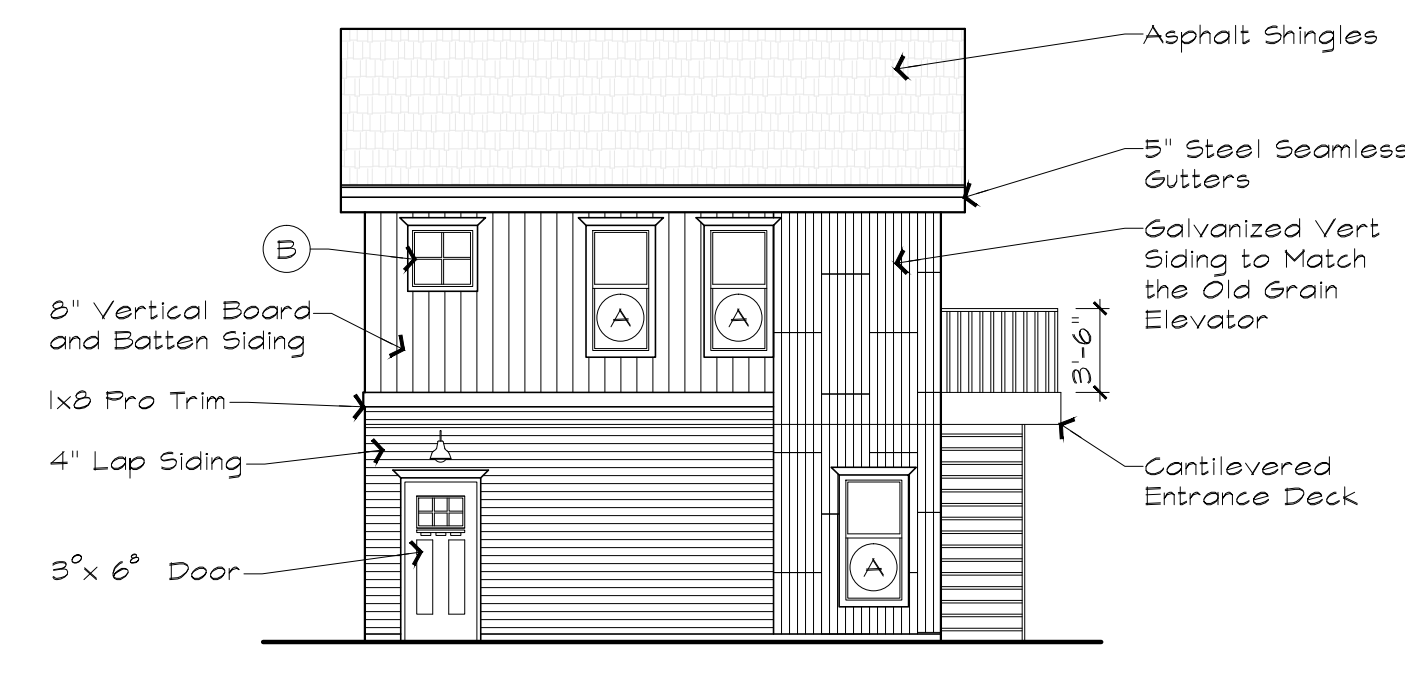
15 North Elevation
1/8" = 1' - 0"



16 East Elevation
1/8" = 1' - 0"



17 South Elevation
1/8" = 1' - 0"



18 West Elevation
1/8" = 1' - 0"

Window Legend

- (A) 2'x 5' Dbl Hung Wood Window
(B) 2'x 2' Fixed Wood Window w/ Grid