



NIGHT WORK ACTIVITIES MAP




Residential Properties Adjacent to Proposed Night Work



0 80 160 320 Feet

Project: Wolfensberger Rd. Mill and Overlay

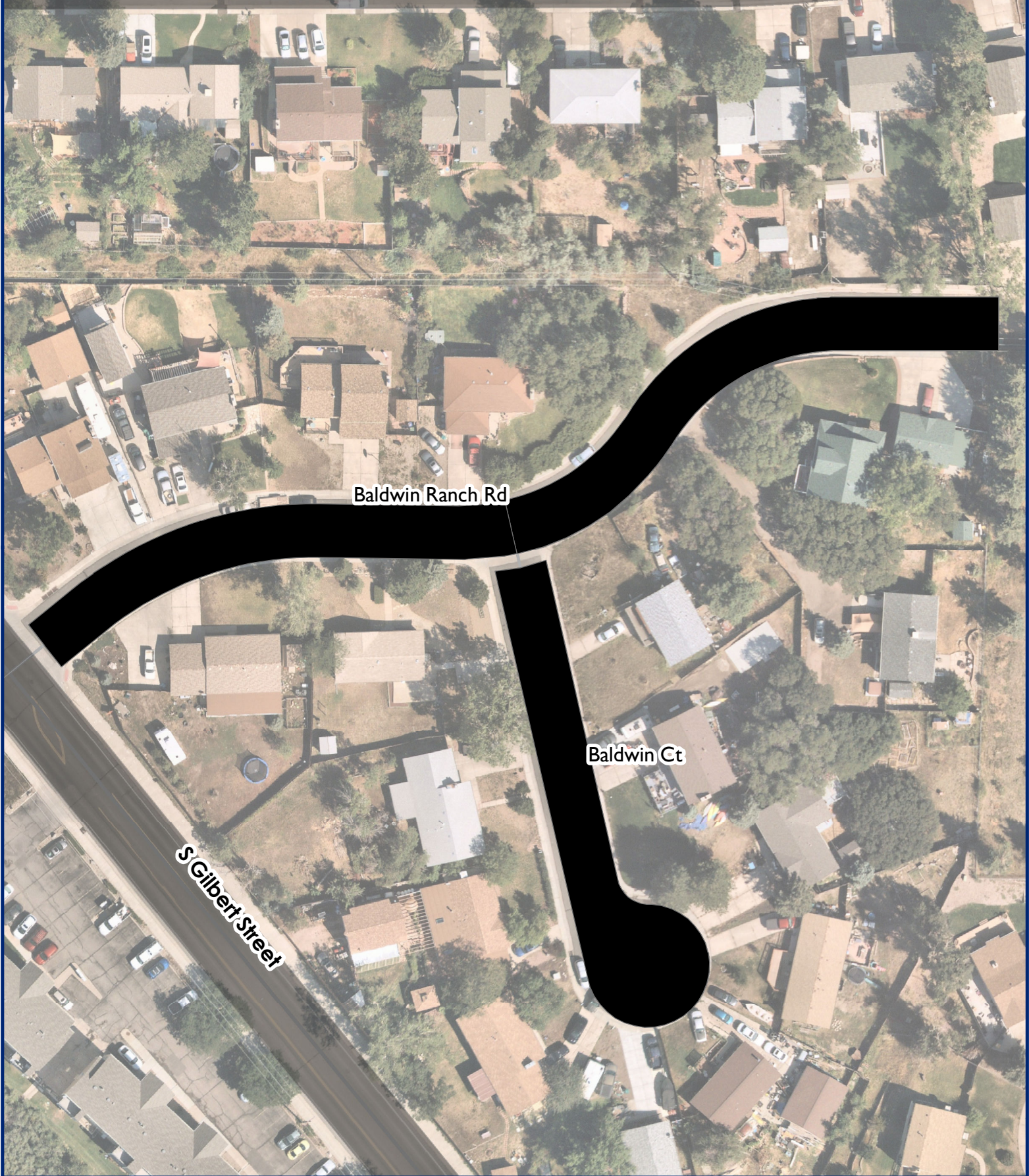


-  300 Foot Project Buffer
-  Night Work Activity Project Area
-  Parcels to Receive Accommodation Offer (0)



2022 ROADWAY MAINTENANCE

Maintenance Area 1



Baldwin Ranch Rd

Baldwin Ct

S Gilbert Street

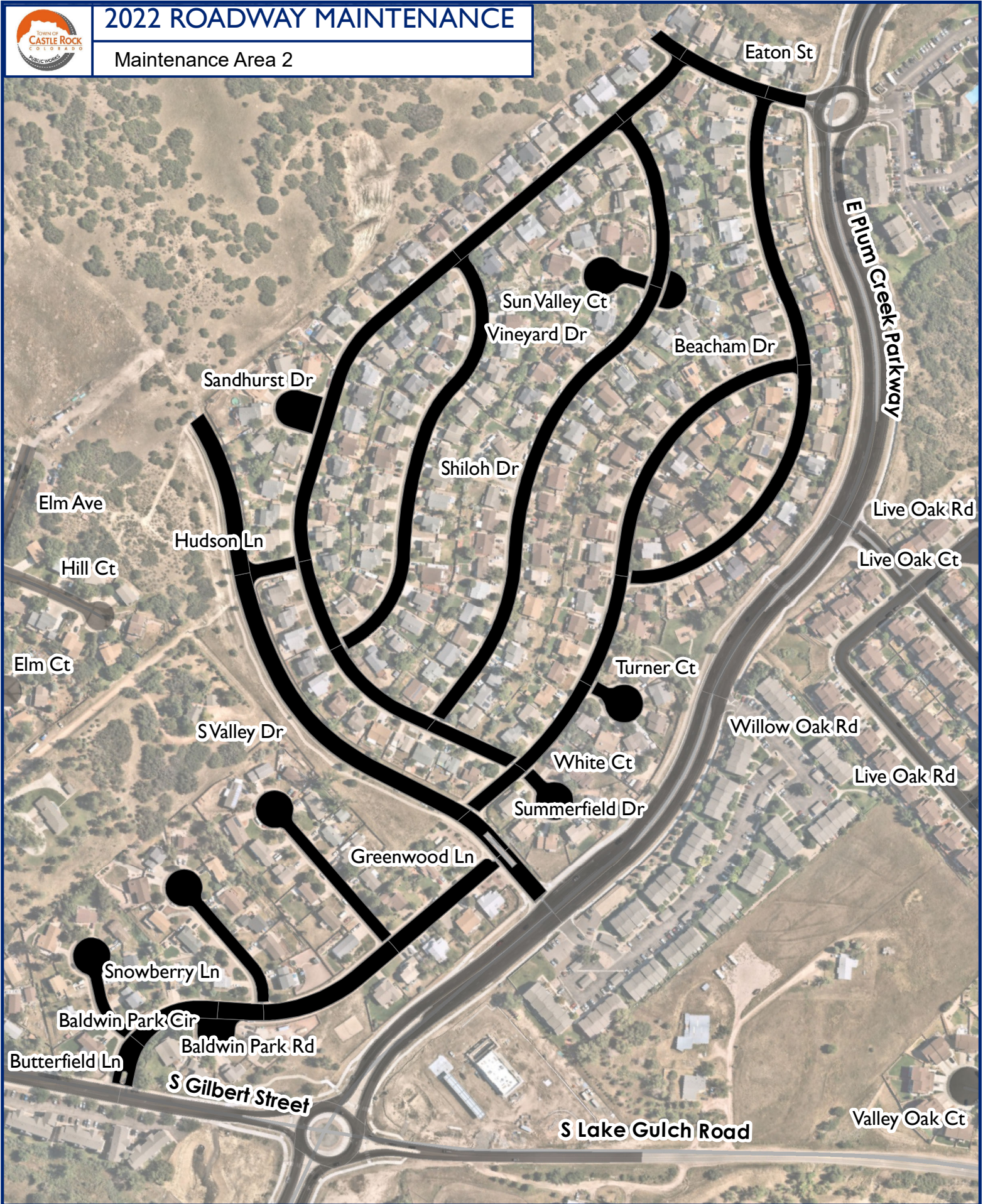


Disclaimer: The data presented has been compiled from various sources, each of which introduces varying degrees of inaccuracies or inconsistencies. Such discrepancies in data are inherent and in supplying this product to the public the Town of Castle Rock assumes no liability for its use or accuracy. For questions or comments regarding omissions, corrections, or updates please visit CRgov.com/directory for contact information.

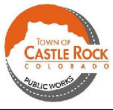


2022 ROADWAY MAINTENANCE

Maintenance Area 2



Disclaimer: The data presented has been compiled from various sources, each of which introduces varying degrees of inaccuracies or inconsistencies. Such discrepancies in data are inherent and in supplying this product to the public the Town of Castle Rock assumes no liability for its use or accuracy. For questions or comments regarding omissions, corrections, or updates please visit CRgov.com/directory for contact information.



2022 ROADWAY MAINTENANCE

Maintenance Area 3



Holmby Ct

Bonnyton Pl

Diamond Head Dr

Kahala Cir

Kahala Cir

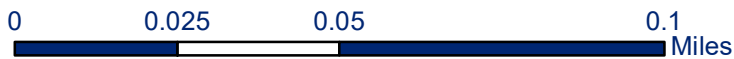
Whitekirk Pl

Appleby Pl

Emerald Drive

Stafford Cir

Easton Ct

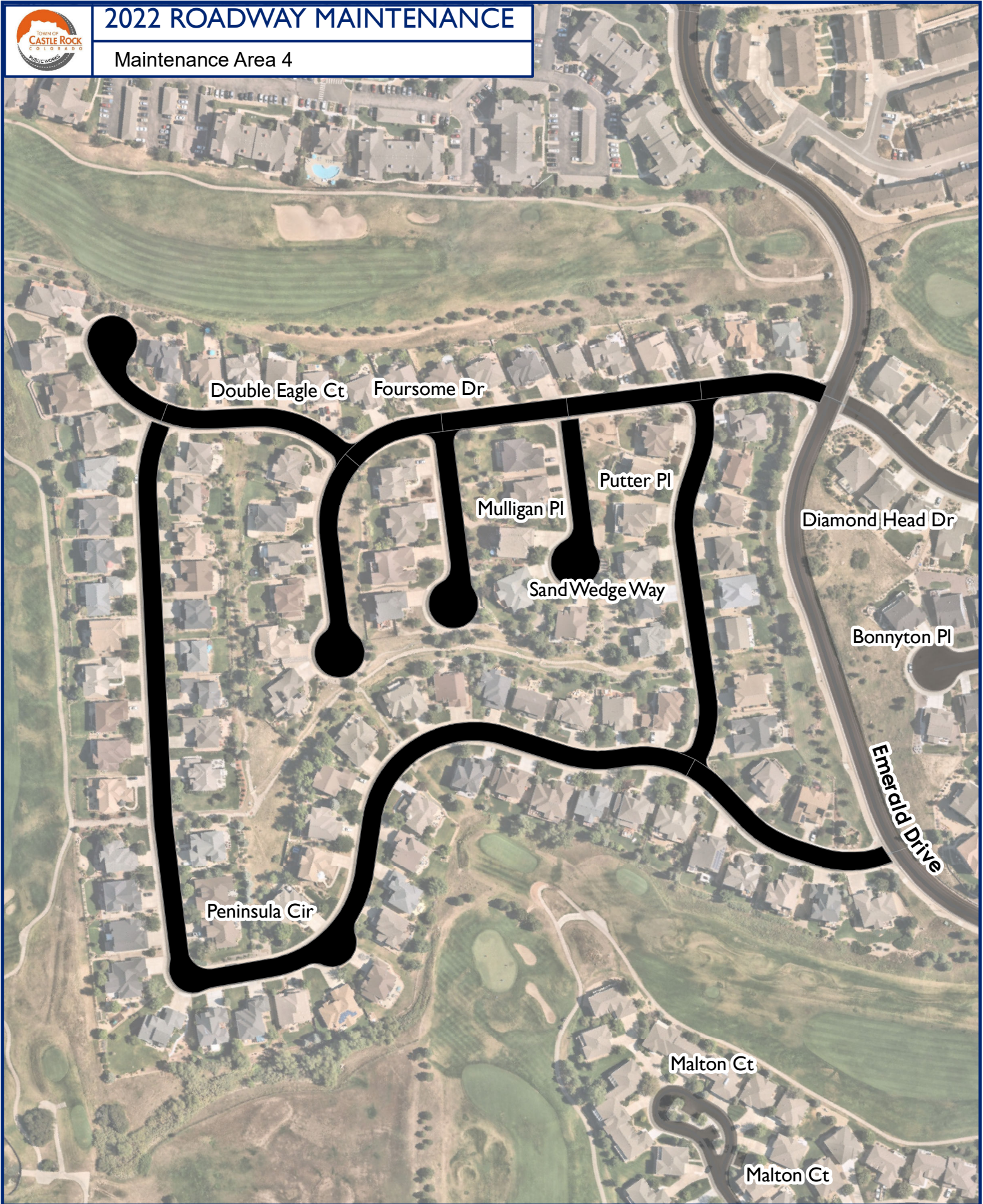


Disclaimer: The data presented has been compiled from various sources, each of which introduces varying degrees of inaccuracies or inconsistencies. Such discrepancies in data are inherent and in supplying this product to the public the Town of Castle Rock assumes no liability for its use or accuracy. For questions or comments regarding omissions, corrections, or updates please visit CRgov.com/directory for contact information.



2022 ROADWAY MAINTENANCE

Maintenance Area 4

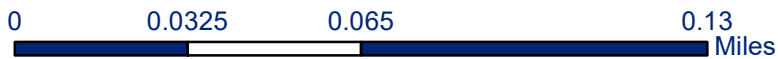


Disclaimer: The data presented has been compiled from various sources, each of which introduces varying degrees of inaccuracies or inconsistencies. Such discrepancies in data are inherent and in supplying this product to the public the Town of Castle Rock assumes no liability for its use or accuracy. For questions or comments regarding omissions, corrections, or updates please visit CRgov.com/directory for contact information.



2022 ROADWAY MAINTENANCE

Maintenance Area 5

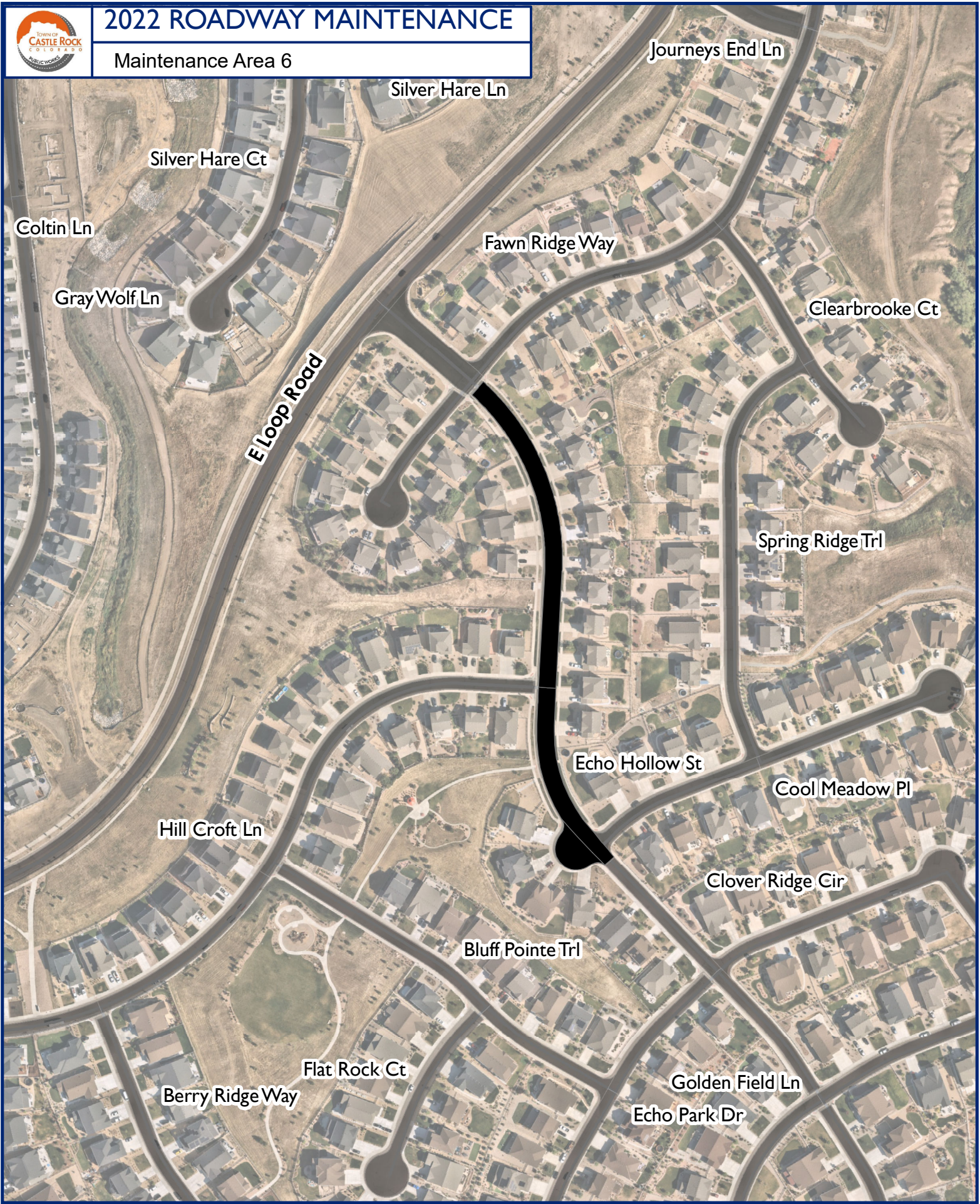


Disclaimer: The data presented has been compiled from various sources, each of which introduces varying degrees of inaccuracies or inconsistencies. Such discrepancies in data are inherent and in supplying this product to the public the Town of Castle Rock assumes no liability for its use or accuracy. For questions or comments regarding omissions, corrections, or updates please visit CRgov.com/directory for contact information.



2022 ROADWAY MAINTENANCE

Maintenance Area 6



Disclaimer: The data presented has been compiled from various sources, each of which introduces varying degrees of inaccuracies or inconsistencies. Such discrepancies in data are inherent and in supplying this product to the public the Town of Castle Rock assumes no liability for its use or accuracy. For questions or comments regarding omissions, corrections, or updates please visit CRgov.com/directory for contact information.



2022 ROADWAY MAINTENANCE

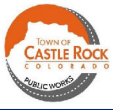
Maintenance Area 7



0 0.0325 0.065 0.13 Miles

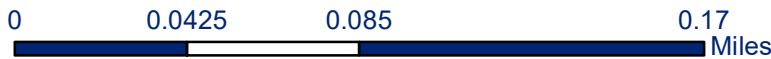


Disclaimer: The data presented has been compiled from various sources, each of which introduces varying degrees of inaccuracies or inconsistencies. Such discrepancies in data are inherent and in supplying this product to the public the Town of Castle Rock assumes no liability for its use or accuracy. For questions or comments regarding omissions, corrections, or updates please visit CRgov.com/directory for contact information.



2022 ROADWAY MAINTENANCE

Maintenance Area 8

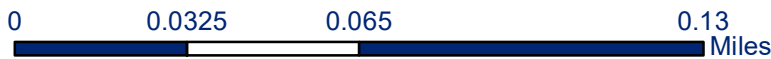


Disclaimer: The data presented has been compiled from various sources, each of which introduces varying degrees of inaccuracies or inconsistencies. Such discrepancies in data are inherent and in supplying this product to the public the Town of Castle Rock assumes no liability for its use or accuracy. For questions or comments regarding omissions, corrections, or updates please visit CRgov.com/directory for contact information.



2022 ROADWAY MAINTENANCE

Maintenance Area 9

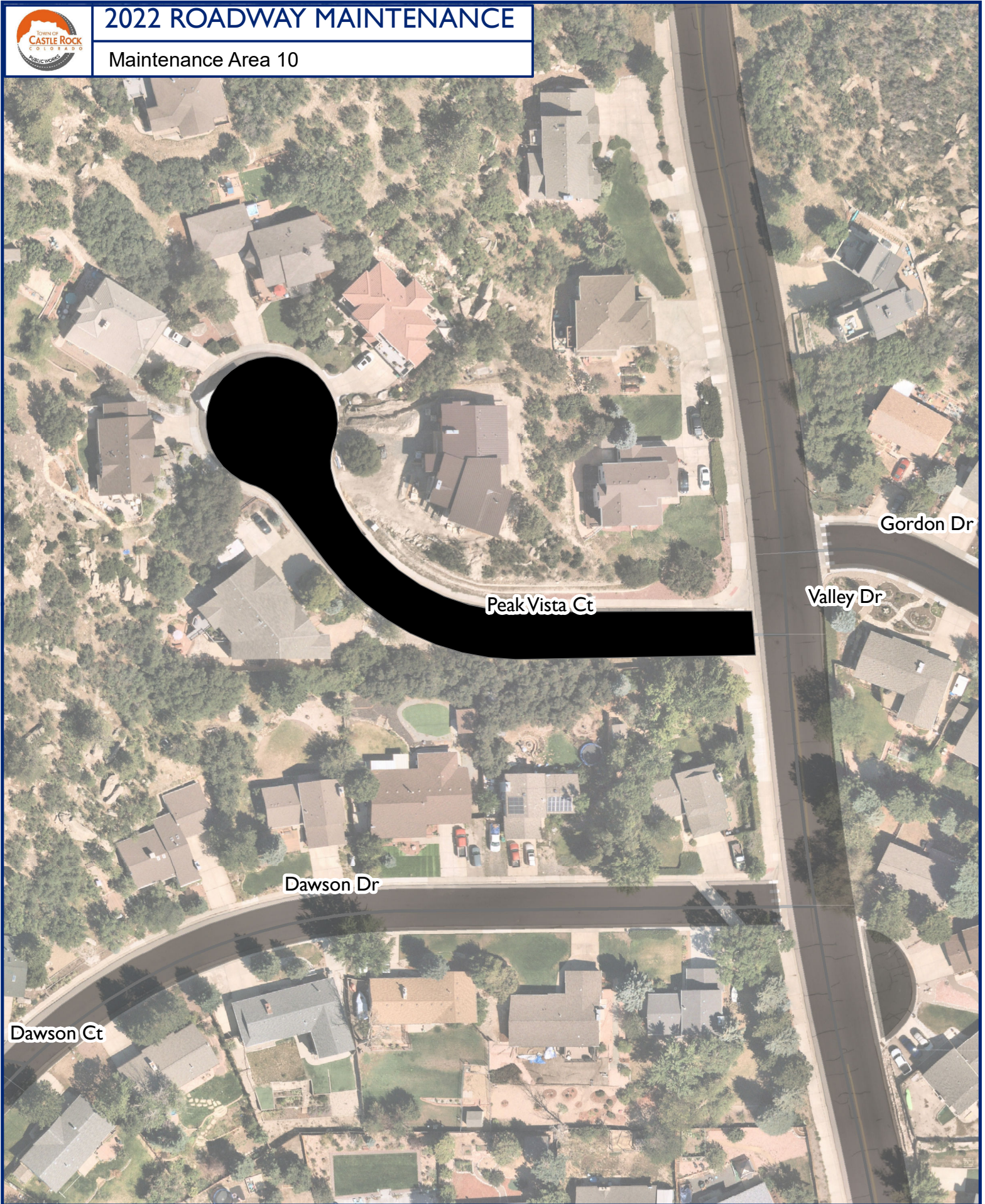


Disclaimer: The data presented has been compiled from various sources, each of which introduces varying degrees of inaccuracies or inconsistencies. Such discrepancies in data are inherent and in supplying this product to the public the Town of Castle Rock assumes no liability for its use or accuracy. For questions or comments regarding omissions, corrections, or updates please visit CRgov.com/directory for contact information.



2022 ROADWAY MAINTENANCE

Maintenance Area 10



Disclaimer: The data presented has been compiled from various sources, each of which introduces varying degrees of inaccuracies or inconsistencies. Such discrepancies in data are inherent and in supplying this product to the public the Town of Castle Rock assumes no liability for its use or accuracy. For questions or comments regarding omissions, corrections, or updates please visit CRgov.com/directory for contact information.