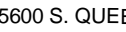
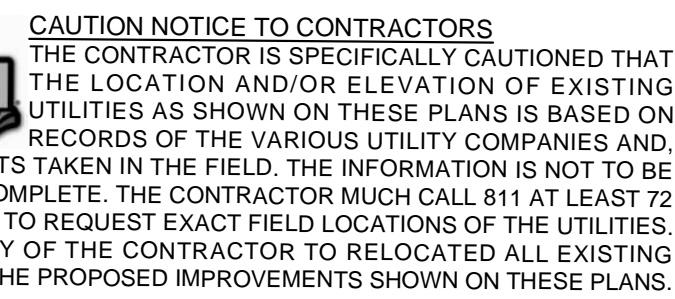


[C-BASE.dwg] [V-BASE.dwg] [V-TIN.dwg] [d-truck.dwg]
Drawing name: E:\DGS\Twin Star\G810 PLUM CREEK\01 Preliminary\CSF\GSP.dwg May 08, 2018 - 9:22am



THE
DIMENSION
GROUP

ARCHITECTURE • CIVIL ENGINEERING • MEP ENGINEERING

5600 S. QUEBEC STREET, SUITE 310B, GREENWOOD VILLAGE, COLORADO 80111
TEL: 720-536-3180 www.dimensiongp.com

PLUM CREEK PARKWAY
CASTLE ROCK, COLORADO

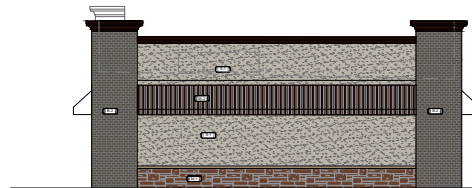
CSP

CASTLE ROCK, CO

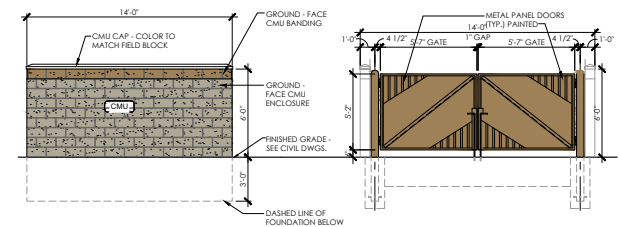
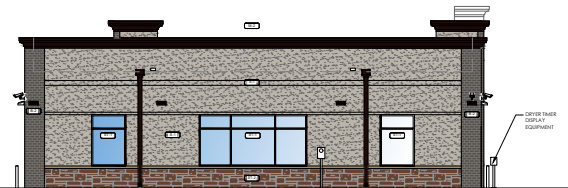


SCALE: 1/8"=1'-0"

SCALE: 1/8"=1'-0"

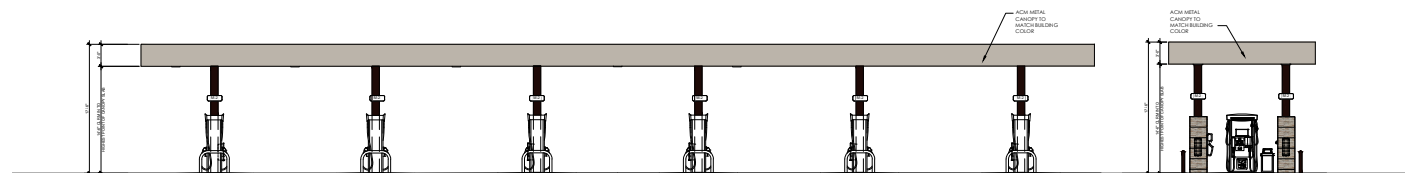


CUSTOMER W/ ORDER DISPL. EQUIPMENT



SCALE: 1/4"=1'-0"

MATERIALS	
B-2	BRICK VENEER - ENDICOTT "MEDIUM IRONSPOT"
S-1	STUCCO - 3-COAT SYSTEM - EL REY "106 BUCKSKIN"
M-1	STONE VENEER - EL DORADO - "LIMESTONE" OR SIMILAR
M-2	PREFINISHED METAL - SW 'SEAL SKIN'
ST-1	STOREFRONT SYSTEM - KAWNEER 451T VG "DARK BRONZE"



SCALE: 1/8"=1'-0"

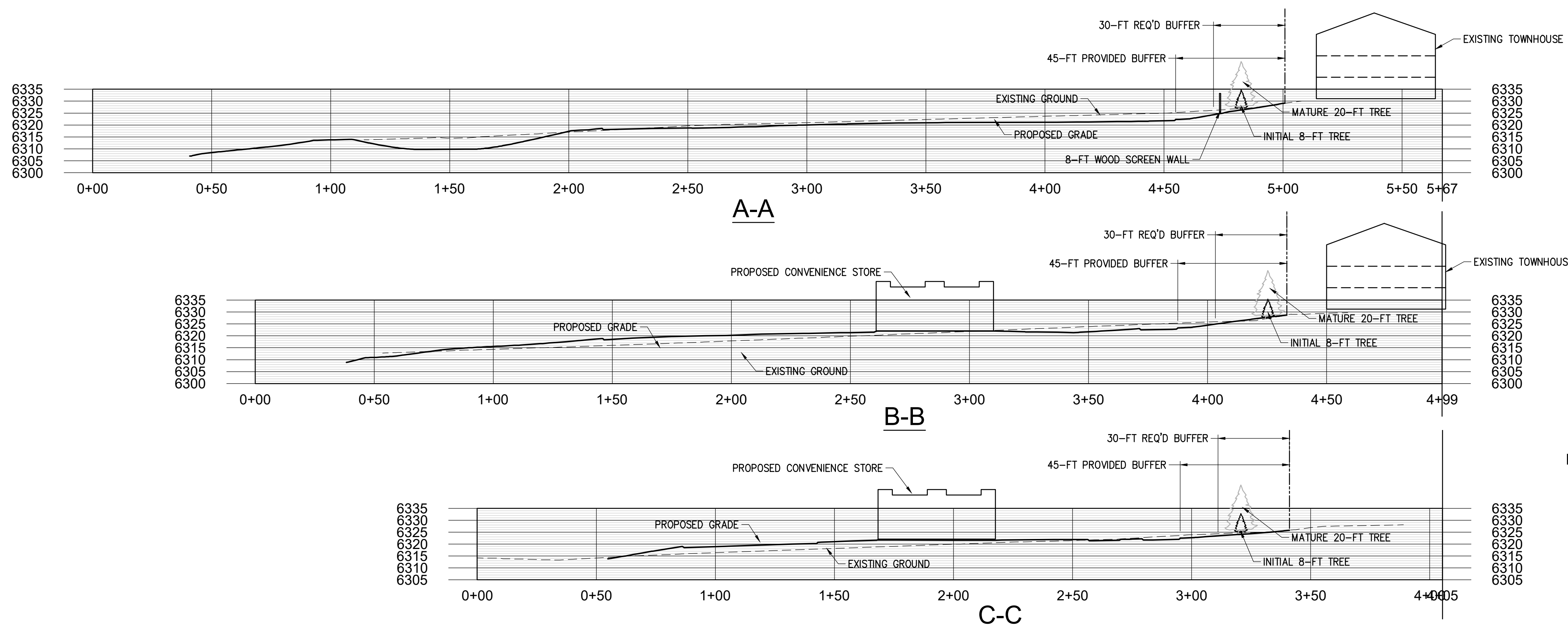
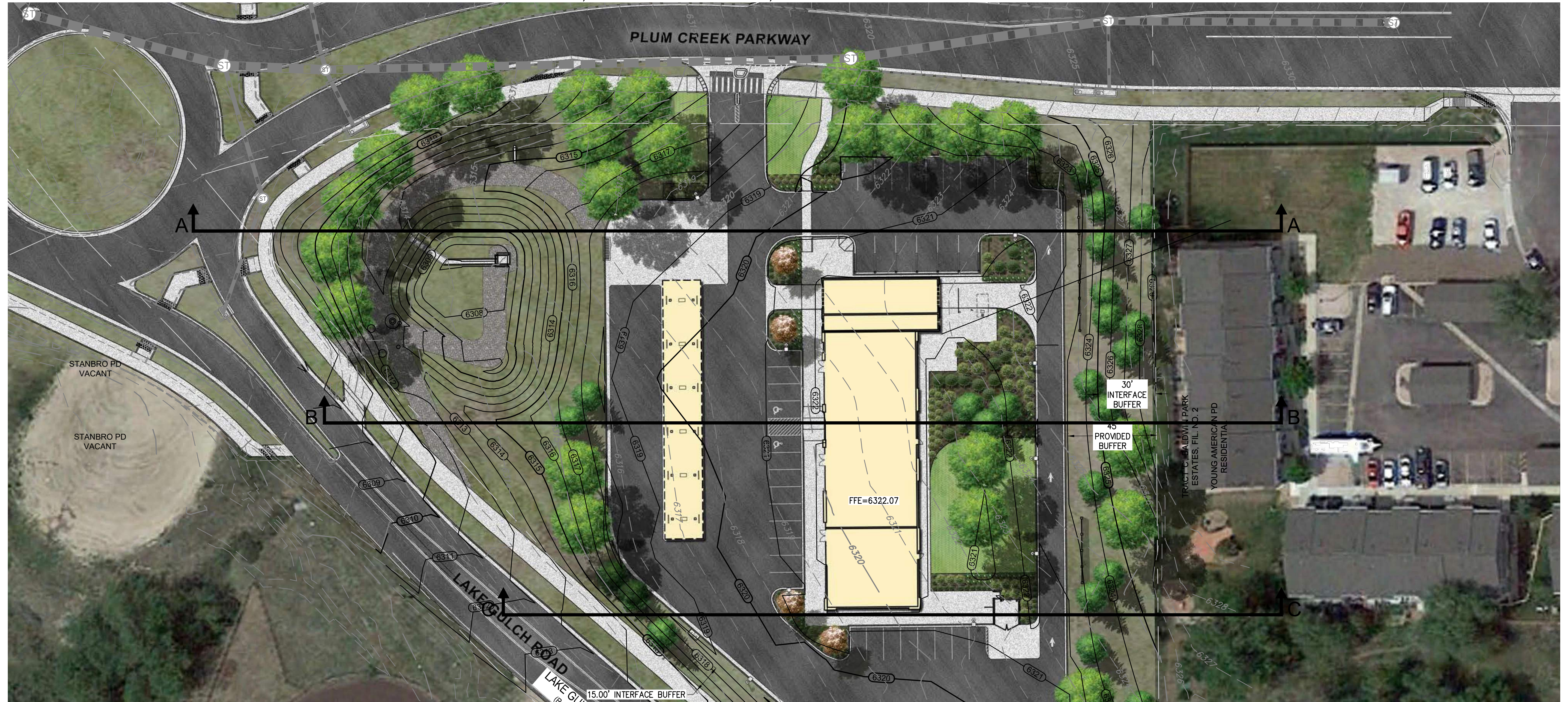




SITE DEVELOPMENT PLAN
LOT 1, BLOCK 1, BALDWIN PARK ESTATES, FILING NO. 2, AMENDMENT NO. 1

PLUM CREEK CONVENIENCE

LOCATED IN THE SOUTHWEST QUARTER OF SECTION 13, TOWNSHIP 8 SOUTH, RANGE 67 WEST OF THE 6th P.M.
TOWN OF CASTLE ROCK, COUNTY OF DOUGLAS, STATE OF COLORADO



CROSS-SECTIONS
PLUM CREEK CONVENIENCE
SITE DEVELOPMENT PLAN
L1, B1, BALDWIN PARK ESTATES, F2, AMD. 1
2/26/2020
SHEET OF 10