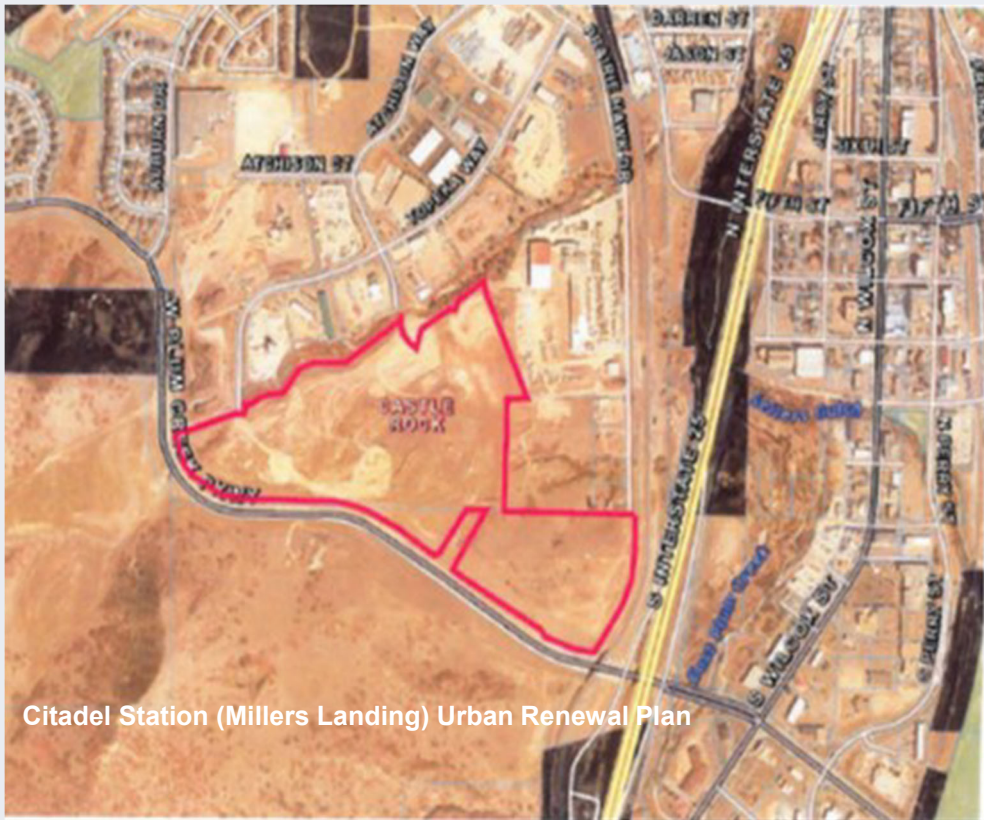




# Castle Rock **Renewal**

## 2022 ANNUAL REPORT

September 2022

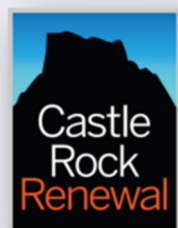


Citadel Station (Millers Landing) Urban Renewal Plan

### Plan Highlights ~

- Located at the NW intersection of Interstate 25 and Plum Creek Pkwy, bounded by Plum Creek Pkwy on the south, I-25 on the east, and the Castle Highlands Industrial Park on the north.
- Comprised of 3 privately owned legal parcels totaling approx. 65.9 acres within the Town boundary.
- To reduce, eliminate and prevent the spread of blight, the goal of the Plan is to remediate the abandoned municipal dump site and abandoned clay mines located on the site and stimulate growth and investment in the area.

## *Partners in Community Development*



**Contact us:**

100 N. Wilcox Street  
Castle Rock, CO 80104  
720-733-3519  
[www.castlerockrenewal.org](http://www.castlerockrenewal.org)

## 2023 CRURA Budget

### Line Item Description

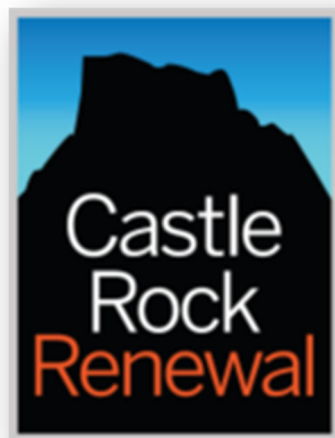
	<u>2021 Actual</u>	<u>2022 Budget</u>	<u>2022 Estimate</u>	<u>Proposed 2023 Budget</u>
<b>Revenues</b>				
Property Tax Increment	\$ -	\$ -	\$ 425,097	\$ -
Town Fee of .5%	750	775	750	775
Sales Tax Increment	-	-	-	-
Interest	-	-	-	-
Developer Fees	-	-	-	-
Misc. Revenue	-	-	-	-
Loan Proceeds from Town	-	-	-	-
Contributed Services	-	35,500	-	35,500
Proceeds from Debt Issuance	-	-	-	-
<b>Total Revenue</b>	<u>750</u>	<u>36,275</u>	<u>425,847</u>	<u>36,275</u>
<b>Expenditures - Personnel</b>				
Salaries/Benefits	-	35,500	-	35,500
<b>Total Salaries/Benefits</b>	-	<u>35,500</u>	-	<u>35,500</u>
<b>Operating Expenditures</b>				
Dues & Publications	-	-	-	-
Legal	-	-	-	-
Office Supplies	-	-	-	-
Postage	-	-	-	-
Bank Fees	114	115	168	250
Web Design and Maintenance	349	350	349	350
Professional Svs	-	310	-	175
Travel	-	-	-	-
Training	-	-	-	-
Outreach	-	-	-	-
Audit	-	-	-	-
<b>Total Operating Expenditures</b>	<u>463</u>	<u>775</u>	<u>517</u>	<u>775</u>
<b>Debt Service Payments</b>				
Principle	-	-	-	-
Interest	-	-	-	-
<b>Total Debt Service Payments</b>	-	-	-	-
<b>Other Epxenses</b>				
Transfer to Dist. Bond Agent	-	-	105,743	-
Contingency (15%)	-	-	-	-
<b>Total Other Expense</b>	-	-	<u>105,743</u>	-
<b>Total Expense</b>	<u>463</u>	<u>36,275</u>	<u>106,260</u>	<u>36,275</u>
<b>Revenue Over/(Under) Expenditures</b>	<u>287</u>	<u>-</u>	<u>319,587</u>	<u>-</u>
<b>Beginning Funds Available</b>	28,296	28,583	28,583	348,170
<b>Ending funds Available</b>	<u>\$ 28,583</u>	<u>\$ 28,583</u>	<u>\$ 348,170</u>	<u>\$ 348,170</u>



## CRURA

### Commissioners

- ◇ Jason Gray, *Chair*
- ◇ Kevin Bracken, *Vice-Chair*
- ◇ Ryan Hollingshead
- ◇ Laura Cavey
- ◇ Caryn Johnson
- ◇ Desiree LaFleur
- ◇ Tim Dietz



## CRURA Staff

- ◇ Pete Mangers,  
*Executive Director*
- ◇ Michael J. Hyman,  
*Legal Counsel*
- ◇ Trish Muller,  
*Treasurer*
- ◇ Lisa Anderson,  
*Clerk*