

RESOLUTION: FIRST RESTATED INTERGOVERNMENTAL AGREEMENT BETWEEN TOWN OF CASTLE ROCK AND PARKER WATER AND SANITATION DISTRICT FOR SHARED USE OF NEWLIN GULCH AQUEDUCT NO. 2

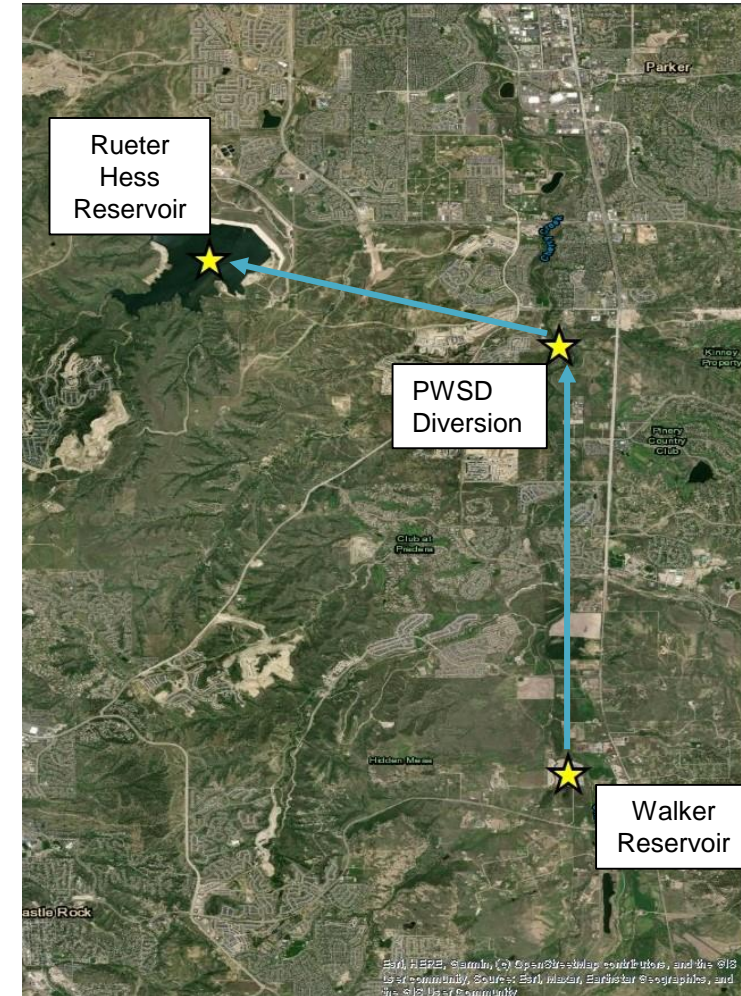
APRIL 1, 2025



PWSD IGA

BACKGROUND

- Original IGA 2014 for picking up our fully reusable effluent at PWSD's diversion
- Castle Rock has 150 acre feet (AF) of storage in Walker Reservoir and no direct way to take this water.
- Castle Rock currently has 478 AF of storage in Rueter Hess Reservoir ("RHR")
- PWSD pump station operates with a minimum capacity of 6 cubic feet per second (cfs) and a maximum of 78 cfs



Map showing key infrastructure locations along Cherry Creek and flow of water from Walker Reservoir to RHR

PWSD IGA

KEY TERMS

- This amendment will allow the Town to release water from Walker Reservoir and put it into storage in RHR
- Castle Rock will pay PWSD the costs to divert and pump water into RHR; Rates are calculated on an annual basis.
- Town will bear stream transit losses (3.13%)
- Notice to be provided to PWSD at least 24 hours before releases made to stream.



Walker Reservoir conditions on March 26, 2025 showing nearly full pool

PWSD IGA

BUDGET & SCHEDULE

- IGA will through December 31, 2034 and can be extended in both parties agree.
- PWSD will charge the Town \$101.24/AF of water diverted and pumped from Cherry Creek into RHR
- Town anticipates 250 AF of water to be diverted annually, totaling \$25,310
- Funding will come from the Water Resources Fund
- Initial release anticipated to be made April 3, 2025



Stream conditions on March 28, 2025 on Cherry Creek just north of Bayou Gulch

PARKER WATER & SANITATION DISTRICT IGA

RECOMMENDATIONS

- Castle Rock Water Commission
- Staff
- *Questions?*



PWSD's diversion structure and pump station on Cherry Creek



*I MOVE TO APPROVE RESOLUTION NO. 2025-041
AS INTRODUCED BY TITLE*

*I MOVE TO APPROVE THE RESOLUTION AS INTRODUCED BY TITLE, WITH THE
FOLLOWING CONDITIONS: _____*

*"I MOVE TO CONTINUE THIS ITEM TO THE TOWN COUNCIL MEETING ON _____ DATE TO
ALLOW ADDITIONAL TIME TO: _____*