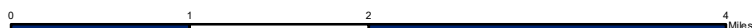
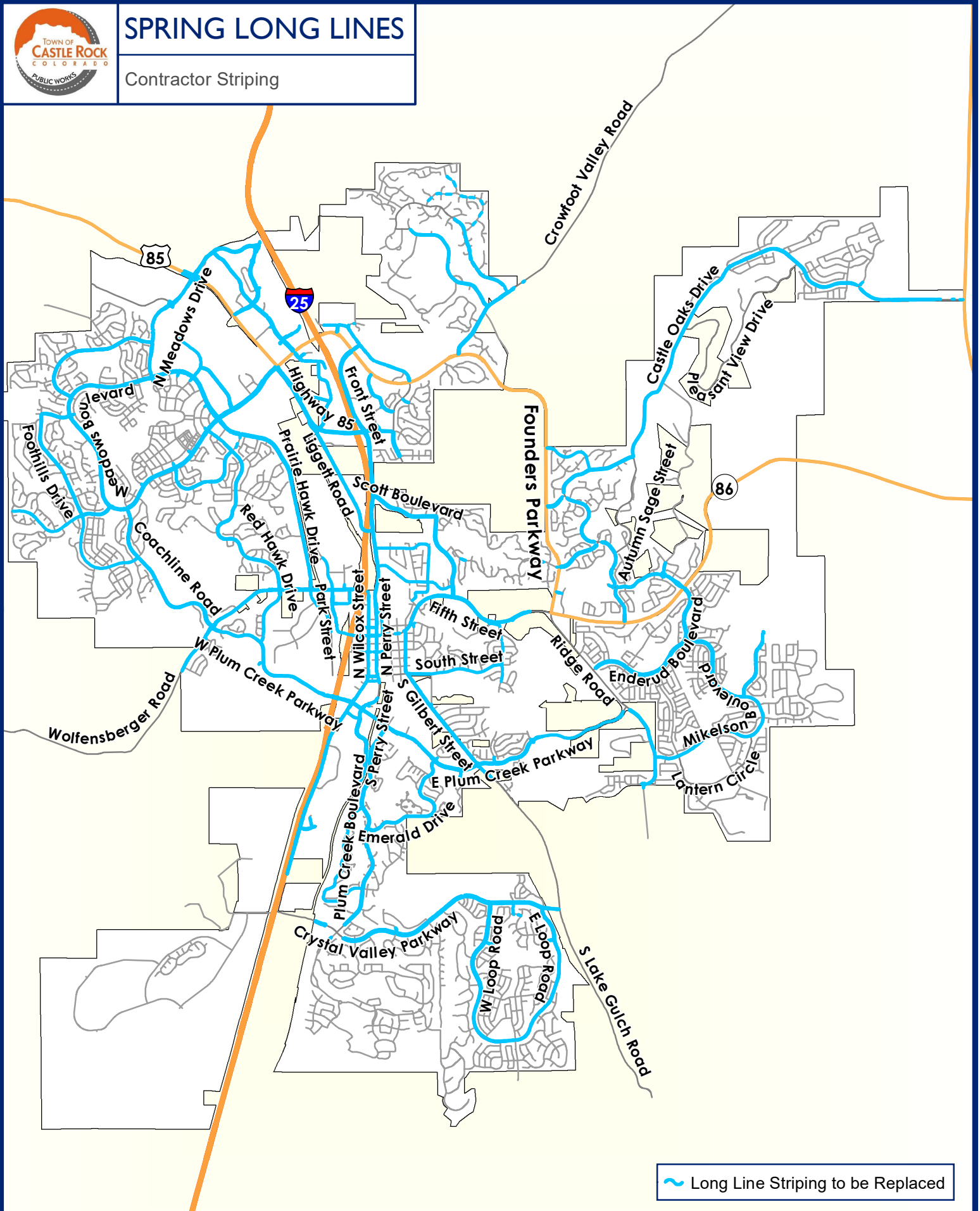


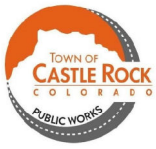
SPRING LONG LINES

Contractor Striping



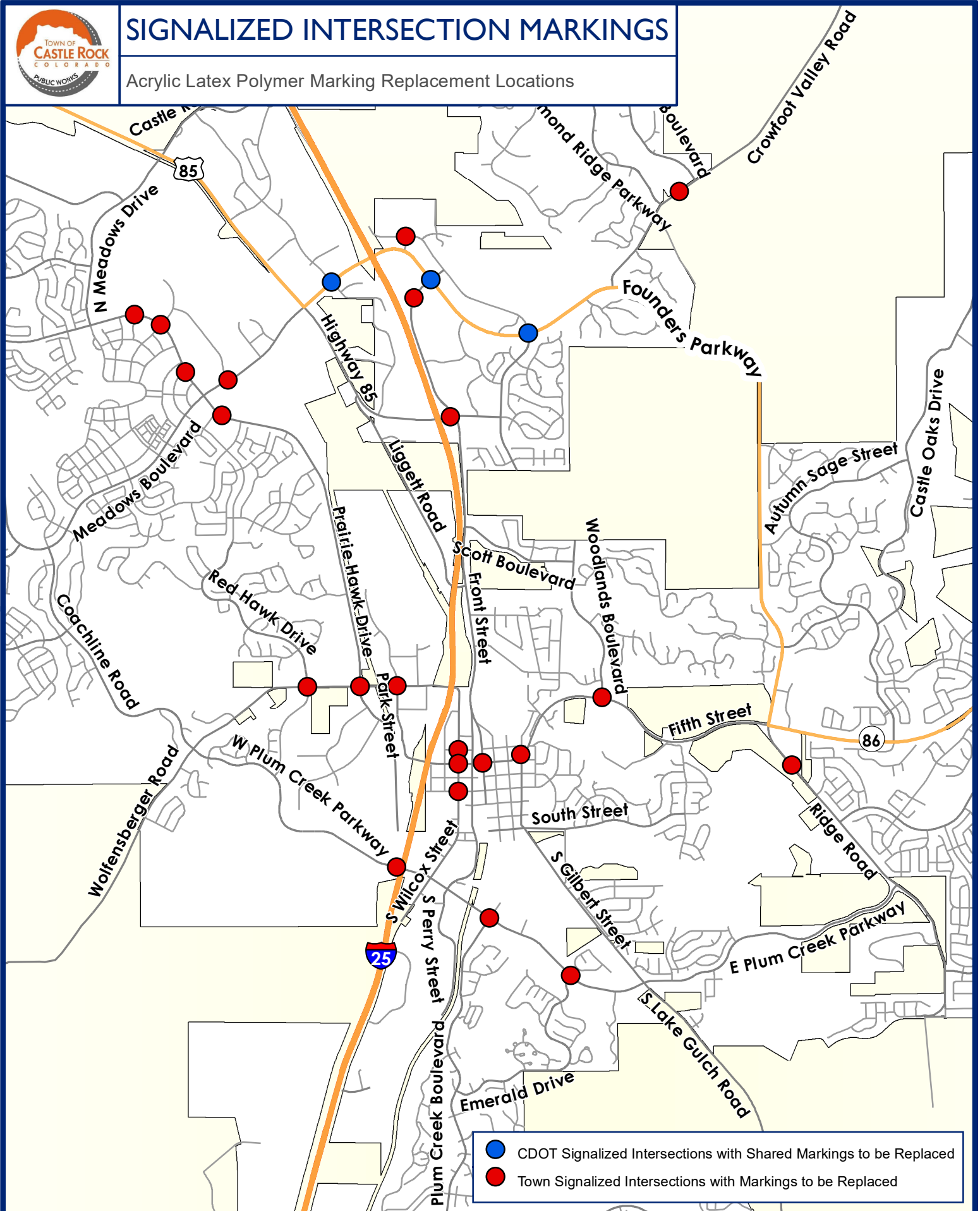
~ Long Line Striping to be Replaced

Disclaimer: The data presented has been compiled from various sources, each of which introduces varying degrees of inaccuracies or inconsistencies. Such discrepancies in data are inherent and in supplying this product to the public the Town of Castle Rock assumes no liability for its use or accuracy. For questions or comments regarding omissions, corrections, or updates please visit CRgov.com/directory for contact information.
Copyright 2023, Town of Castle Rock
Document Path: J:\GIS\GIS Projects - Transportation\2023_StrippingQuantities\2023_3_1_SpringLongLines_Bx11P.mxd



SIGNALIZED INTERSECTION MARKINGS

Acrylic Latex Polymer Marking Replacement Locations



CDOT Signalized Intersections with Shared Markings to be Replaced

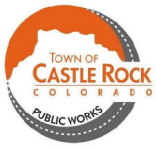


Town Signalized Intersections with Markings to be Replaced

0 0.5 1 2 Miles

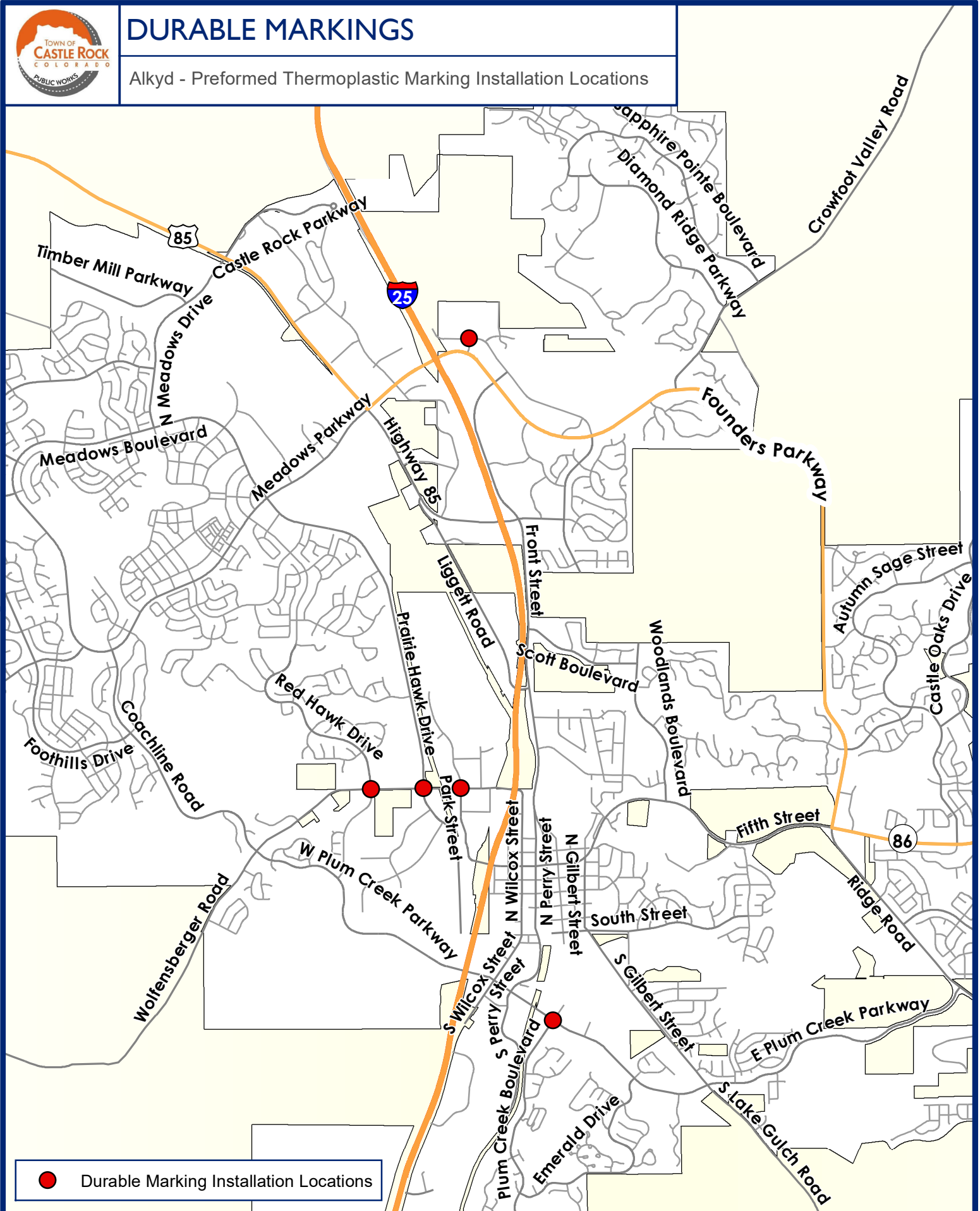


Disclaimer: The data presented has been compiled from various sources, each of which introduces varying degrees of inaccuracies or inconsistencies. Such discrepancies in data are inherent and in supplying this product to the public the Town of Castle Rock assumes no liability for its use or accuracy. For questions or comments regarding omissions, corrections, or updates please visit CRgov.com/directory for contact information.
Copyright 2023, Town of Castle Rock
Document Path: J:\GIS\GIS Projects - Transportation\2023_Striping\Quantiles\2023_3_1_SignalizedIntersectionMarkings_Bx11P.mxd



DURABLE MARKINGS

Alkyd - Preformed Thermoplastic Marking Installation Locations



0 0.5 1 2 Miles



Disclaimer: The data presented has been compiled from various sources, each of which introduces varying degrees of inaccuracies or inconsistencies. Such discrepancies in data are inherent and in supplying this product to the public the Town of Castle Rock assumes no liability for its use or accuracy. For questions or comments regarding omissions, corrections, or updates please visit CRgov.com/directory for contact information.
Copyright 2023, Town of Castle Rock
Document Path: J:\GIS\GIS Projects - Transportation\2023_ShippingQuantities\2023_3_1_DurableMarkings_Bx11P.mxd