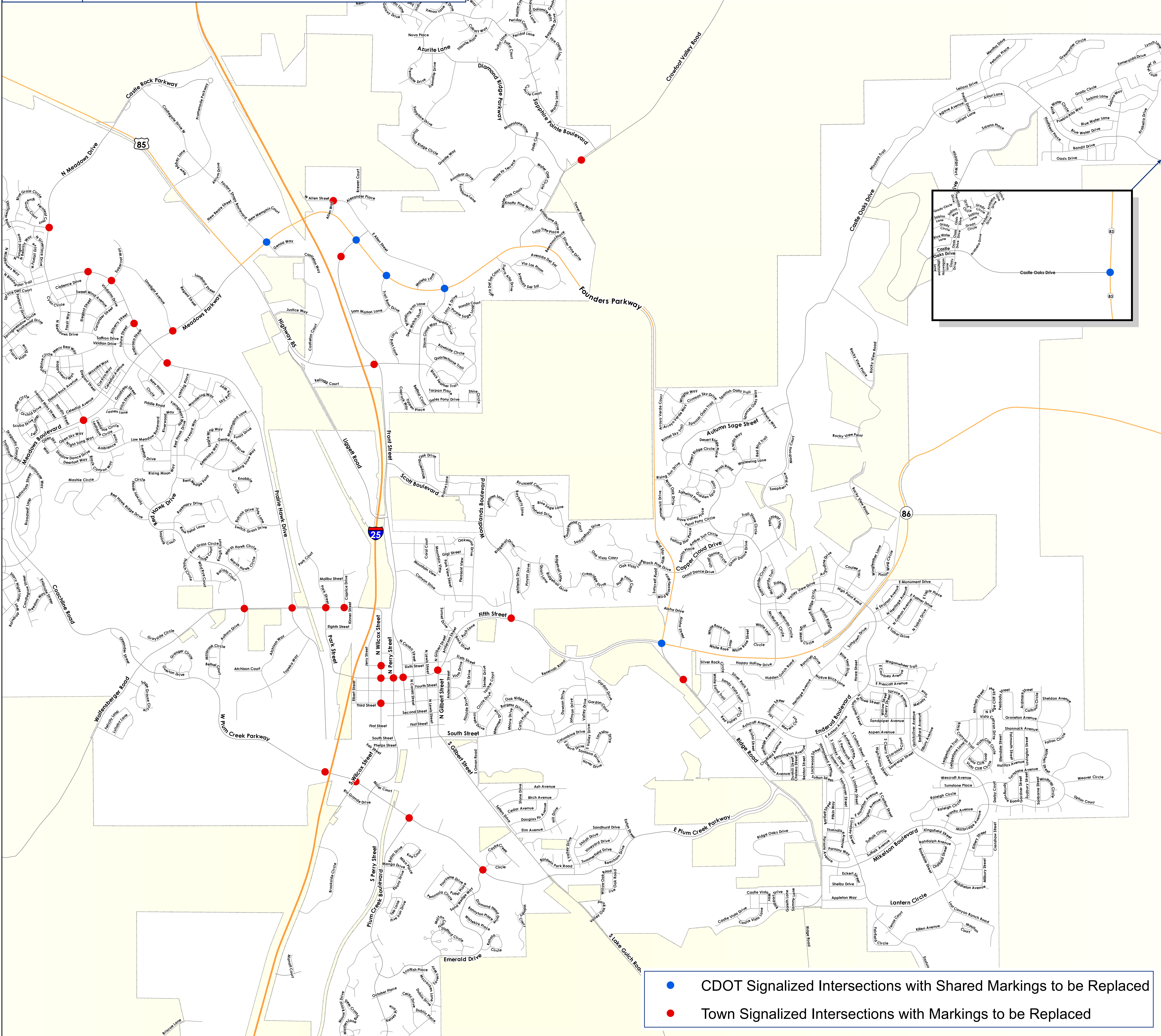
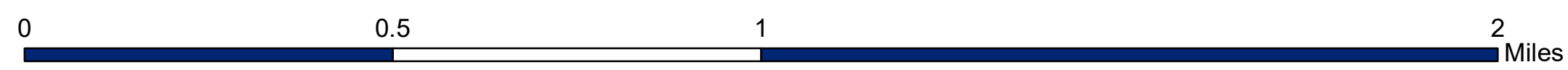


# INTERSECTION MARKINGS

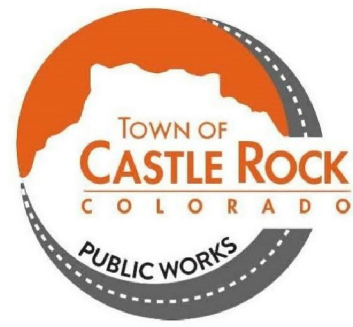
## Marking Replacement - Stop Bars and Crosswalks



- CDOT Signalized Intersections with Shared Markings to be Replaced
- Town Signalized Intersections with Markings to be Replaced

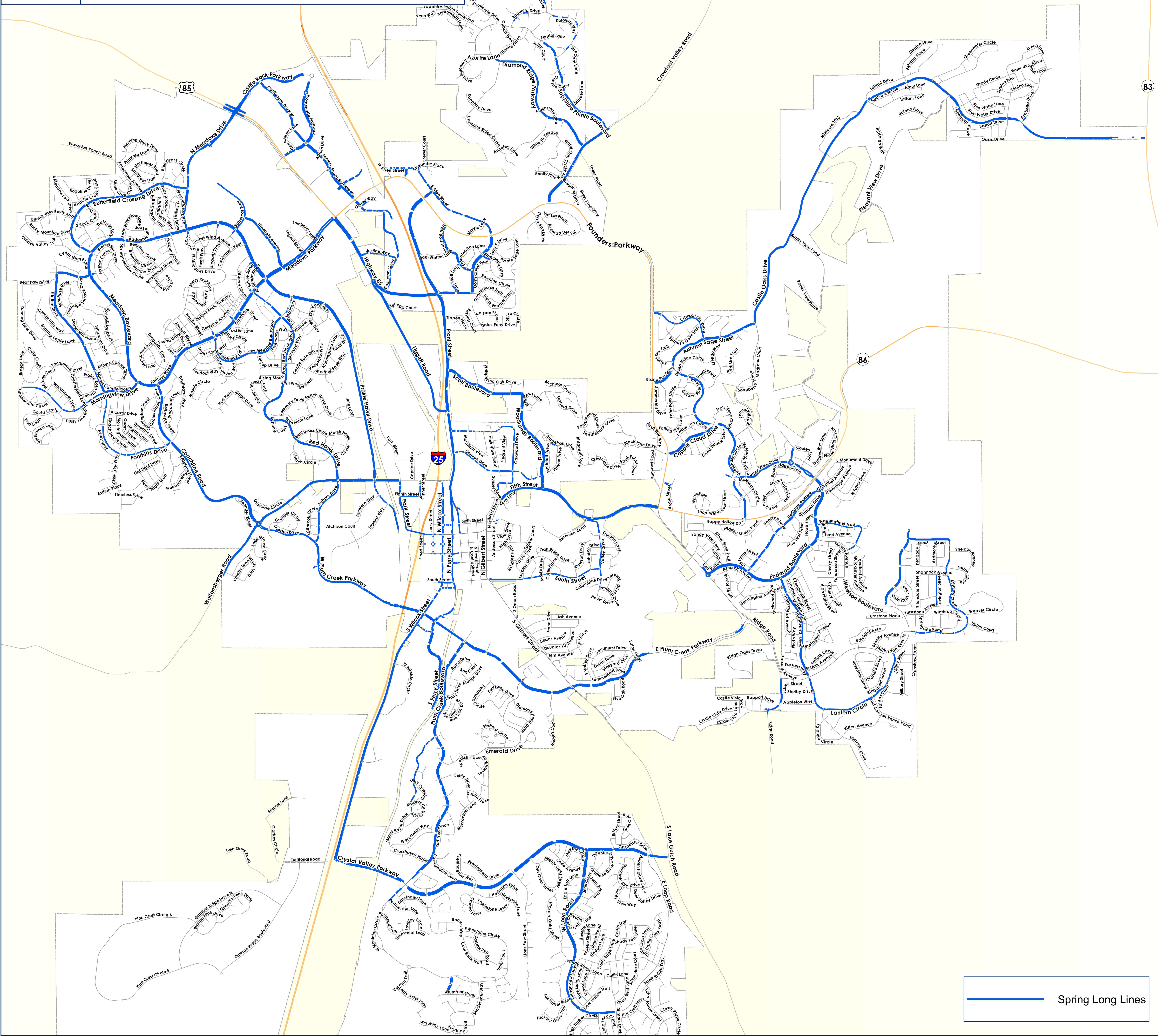


Disclaimer: The data presented has been compiled from various sources, each of which introduces varying degrees of inaccuracies or inconsistencies. Such discrepancies in data are inherent and in supplying this product to the public the Town of Castle Rock assumes no liability for its use or accuracy. For questions or comments regarding omissions, corrections, or updates please visit [CRgov.com/directory](http://CRgov.com/directory) for contact information.  
Copyright 2022, Town of Castle Rock

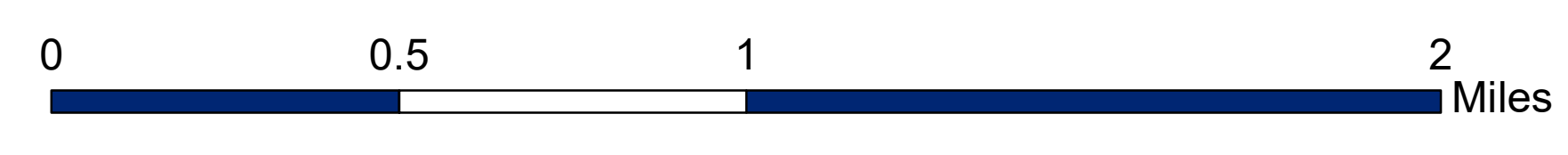


# 2022 SPRING LONG LINES

## Contractor Striping



Spring Long Lines



Disclaimer: The data presented has been compiled from various sources, each of which introduces varying degrees of inaccuracies or inconsistencies. Such discrepancies in data are inherent and in supplying this product to the public the Town of Castle Rock assumes no liability for its use or accuracy. For questions or comments regarding omissions, corrections, or updates please visit [CRgov.com/directory](http://CRgov.com/directory) for contact information.