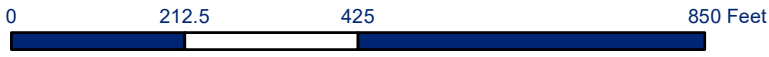




NIGHT WORK ACTIVITIES MAP

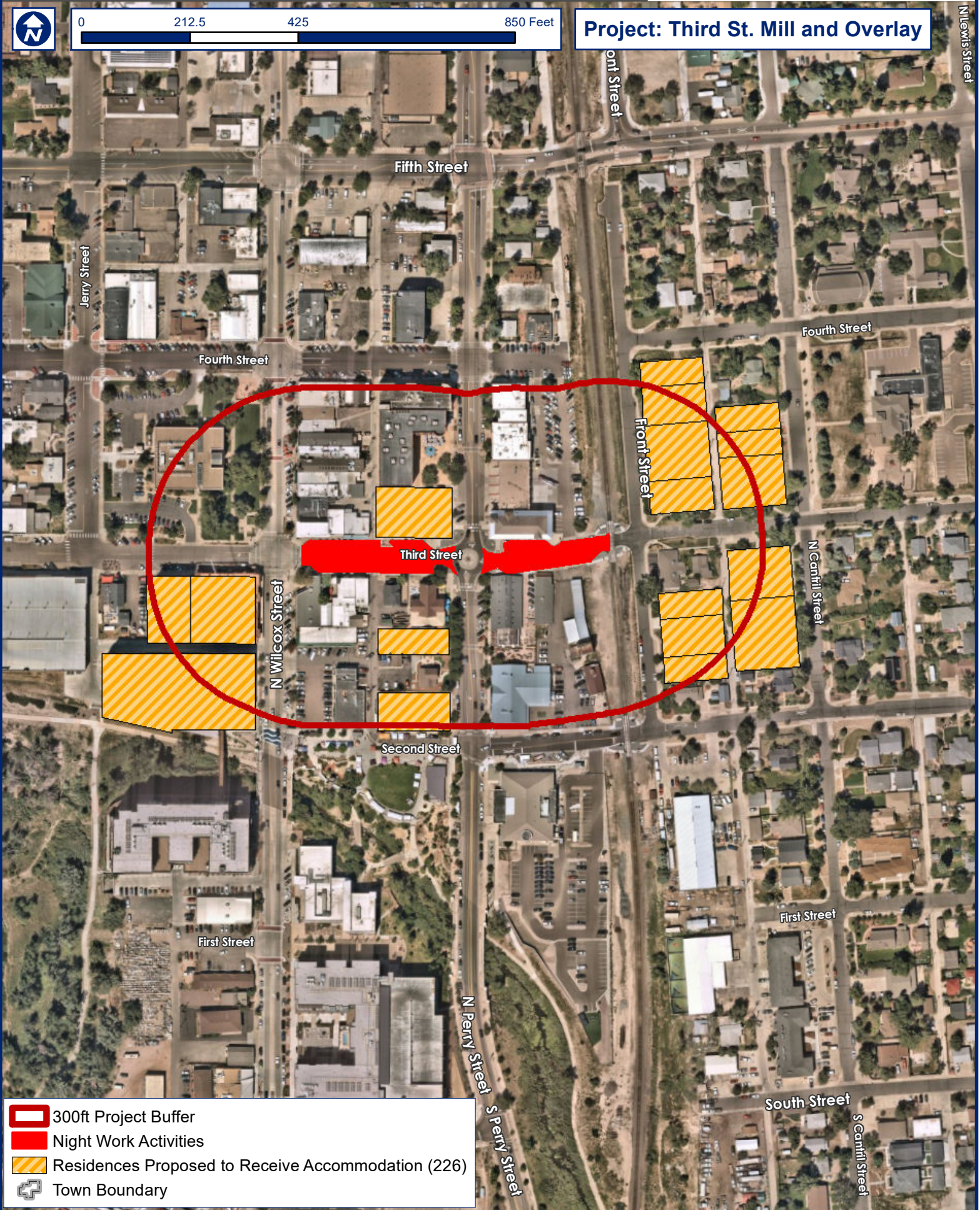
Residential Properties Adjacent to Proposed Night Work





ATTACHMENT B



Project: Third St. Mill and Overlay

N Lewis Street



-  300ft Project Buffer
-  Night Work Activities
-  Residences Proposed to Receive Accommodation (226)
-  Town Boundary



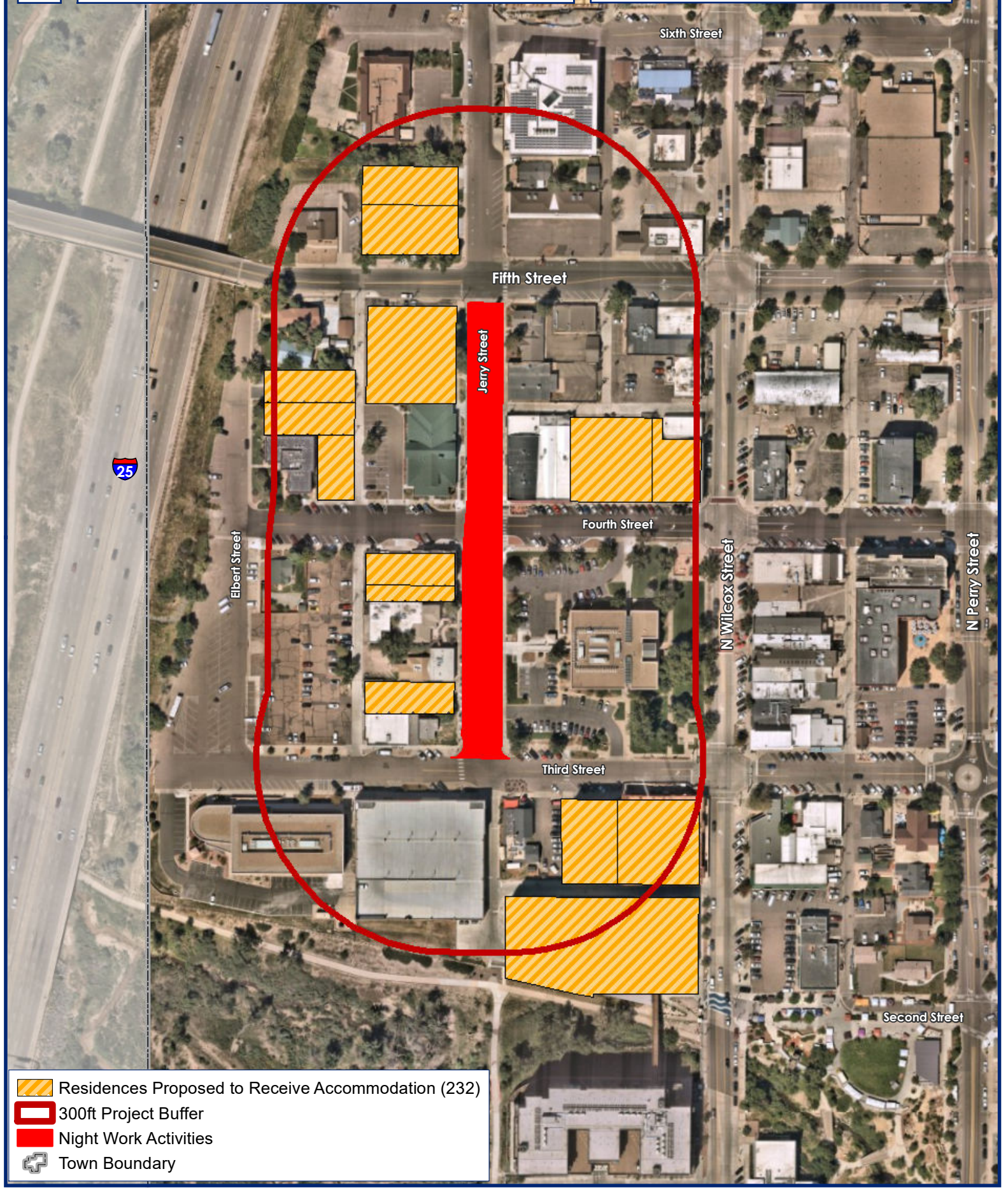
NIGHT WORK ACTIVITIES MAP





Residential Properties Adjacent to Proposed Night Work

ATTACHMENT B



Project: Jerry St. Mill and Overlay



-  Residences Proposed to Receive Accommodation (232)
-  300ft Project Buffer
-  Night Work Activities
-  Town Boundary

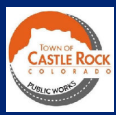
Slurry Seal- 1400 SY, Asphalt Patching, Curb & Gutter Repair- 80 LF



Fourth St

N Perry St

Front St



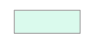
Castle Rock
Public Works
4175 N Castleton
Castle Rock, CO
80109

Project:
Fourth St and Perry Parking Lot

Date: 12/13/2023 Drawn By: JF


Address:
Southeast of Fourth and Perry St
Castle Rock, CO

Legend:

	2023 Parking Lot Treatments
---	-----------------------------

Scale:

1 inch = 43 feet




Four Corners Intersection Improvement Project

Red = Approximates Limits of Construction

Blue = Residential Properties within 300' of project limits





NIGHT WORK ACTIVITIES MAP

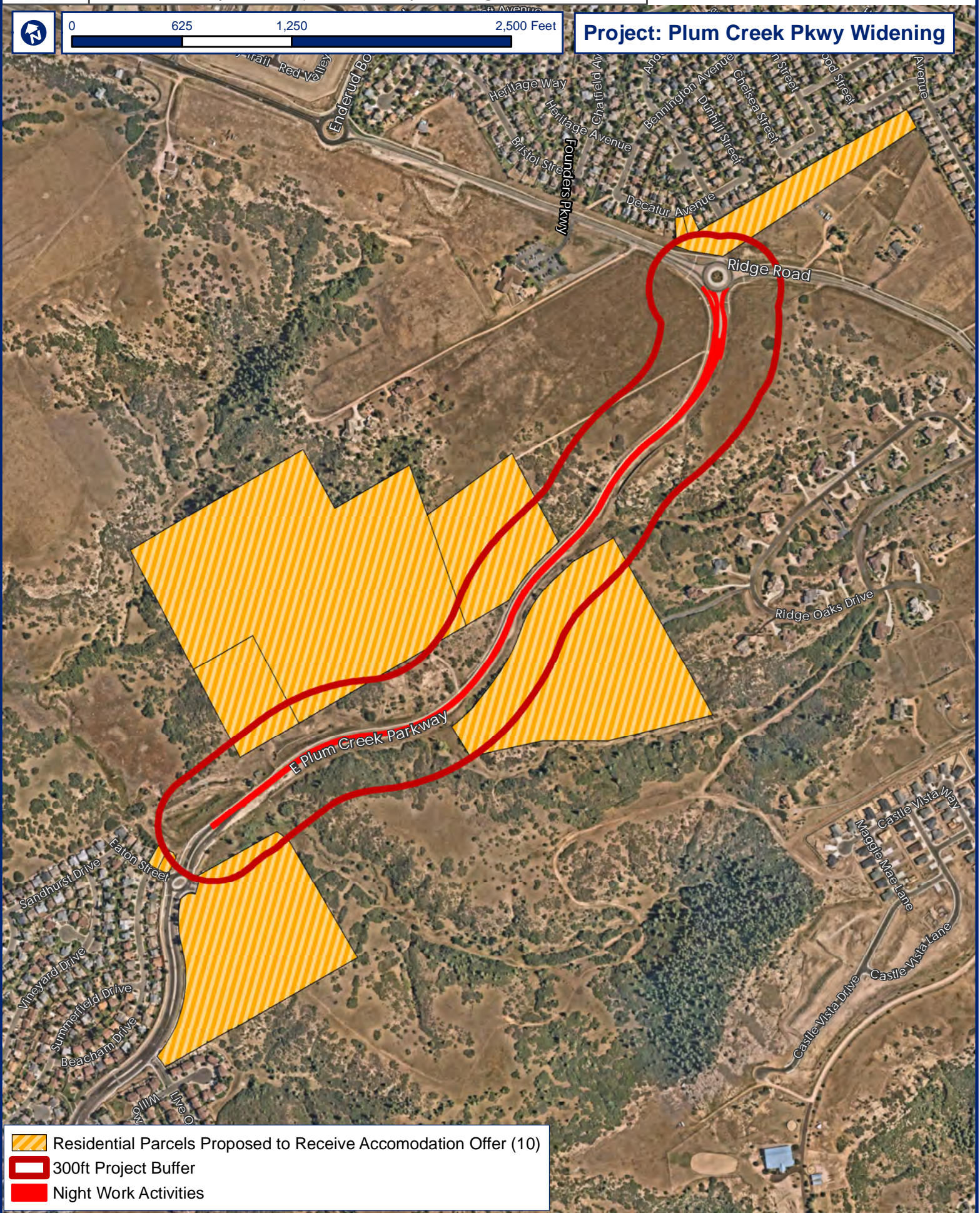
Residential Properties Adjacent to Proposed Night Work




ATTACHMENT B



0 625 1,250 2,500 Feet

Project: Plum Creek Pkwy Widening

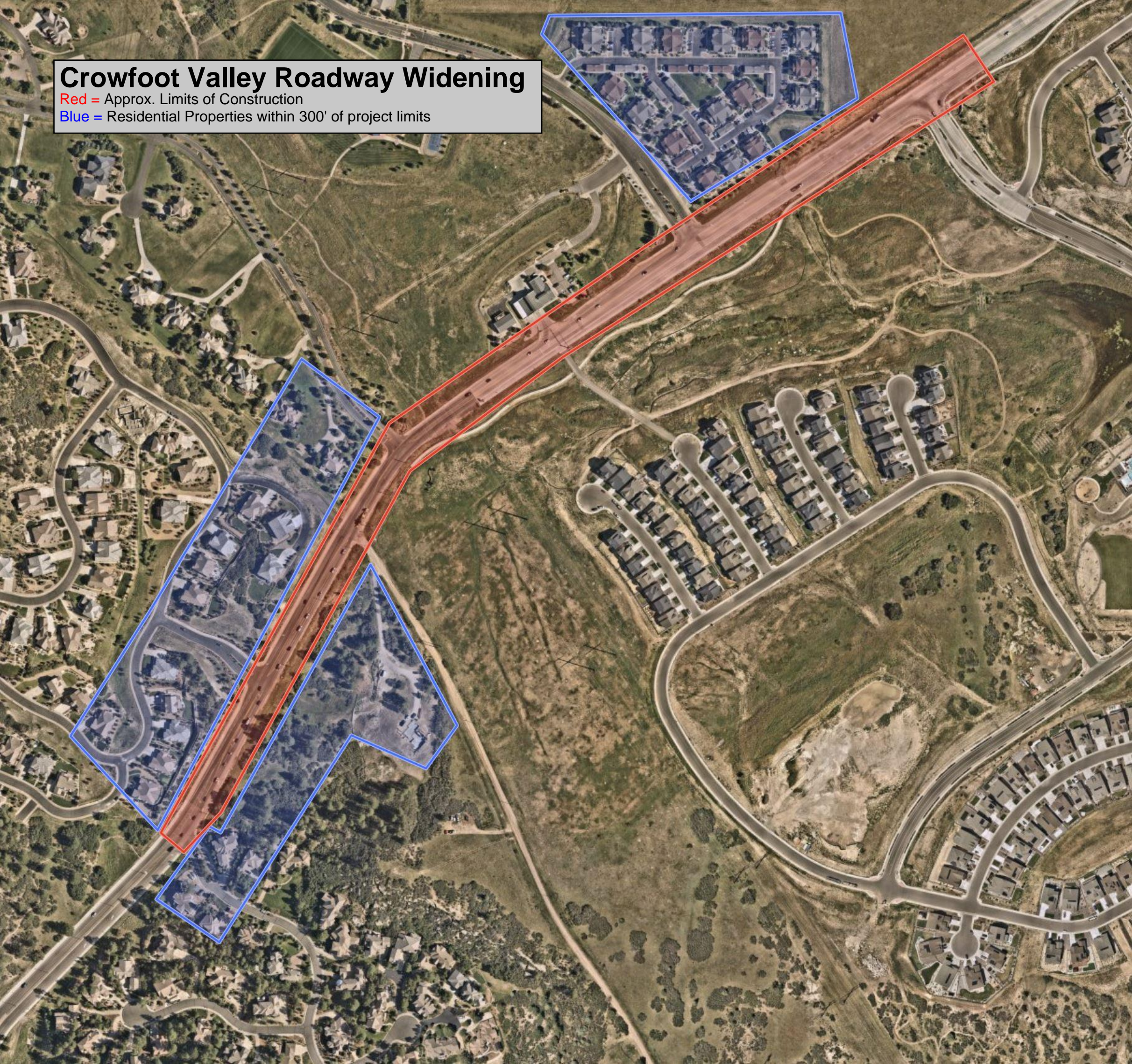


-  Residential Parcels Proposed to Receive Accomodation Offer (10)
-  300ft Project Buffer
-  Night Work Activities

Crowfoot Valley Roadway Widening

Red = Approx. Limits of Construction

Blue = Residential Properties within 300' of project limits



Wolfensberger & Park Street Intersection Improvement Project

Red = Approx limits of construction

Blue = Residential/commercial hotels within 300' of project limits



Crystal Valley Interchange

Red = Approx. Limits of Construction

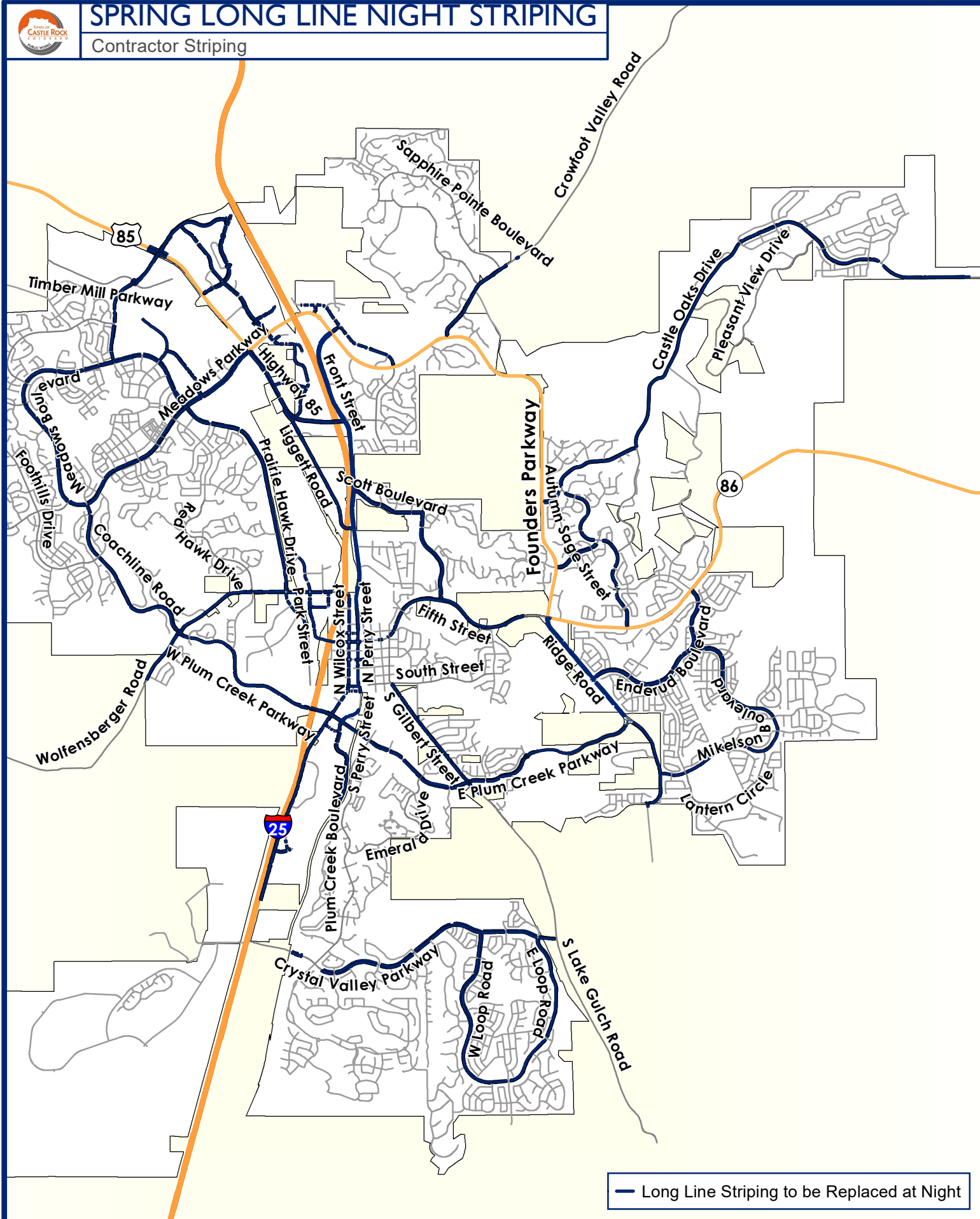
Blue = Residential Properties within 300' of Project limits



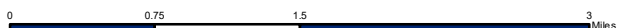


SPRING LONG LINE NIGHT STRIPING

Contractor Striping



— Long Line Striping to be Replaced at Night



Disclaimer: The data presented has been compiled from various sources, each of which introduces varying degrees of inaccuracies or inconsistencies. Such discrepancies in data are inherent and in supplying this product to the public the Town of Castle Rock assumes no liability for its use or accuracy. For questions or comments regarding omissions, corrections, or updates please visit CRGov.com/directory for contact information.
 Copyright 2024, Town of Castle Rock
 Document Path: J:\GIS\GIS Projects - Transportation\2024_Striping_Quantities\2024_1_23_NightWork_LongLines_Bx11P.mxd