

Crystal Valley Ranch Filing 15 SDP Amendment

Town of Castle Rock – Town Council
September 3, 2019

SDP Comparison – Old SDP

Legend



Homebuilder Trees



Proposed Trees



Landscape Bed



Sod



Native Seed



SDP Comparison – New Water Conservation SDP

Legend



Homebuilder Trees



Proposed Trees



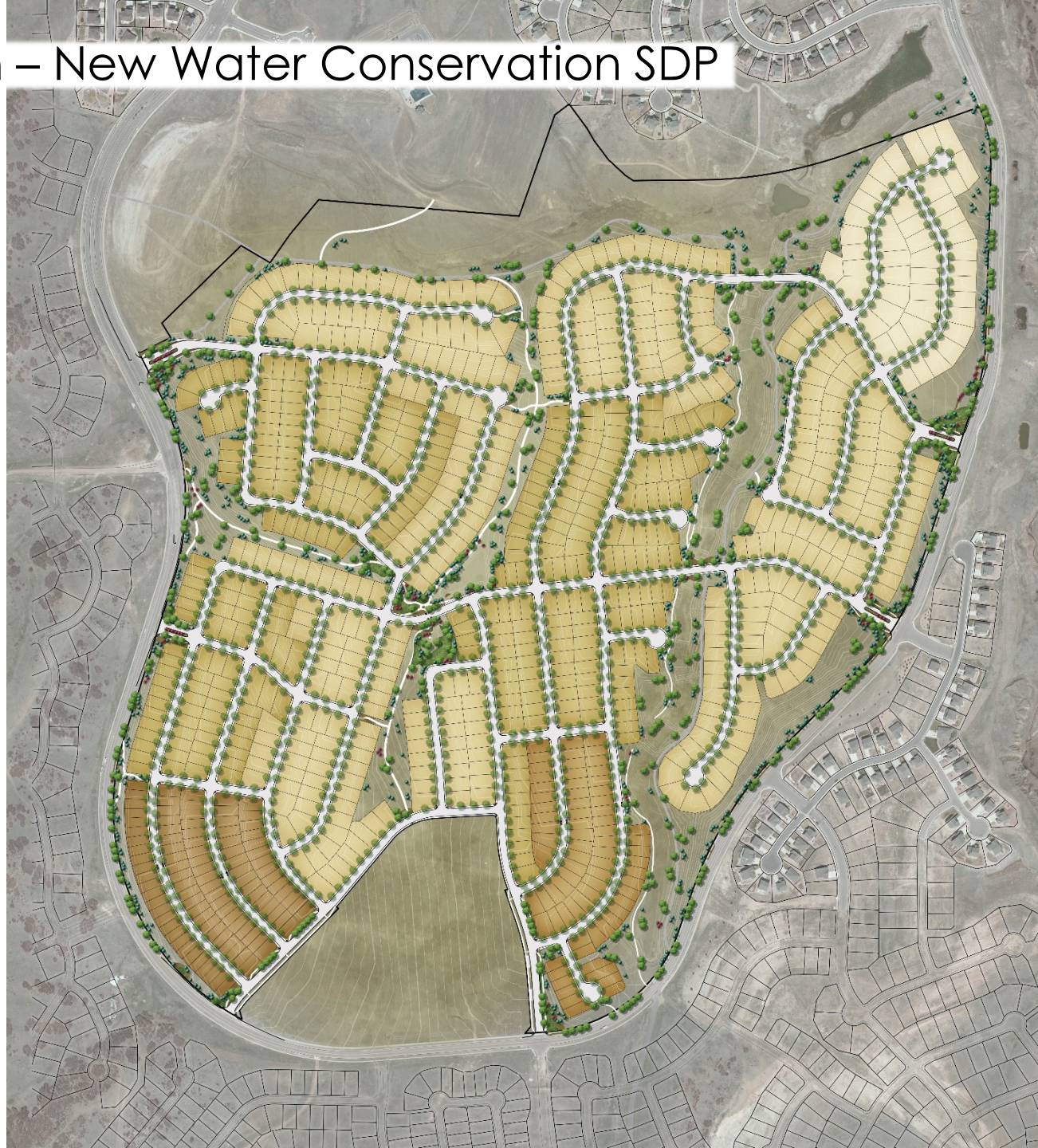
Landscape Bed



Sod



Native Seed



SDP Landscape Quantity Comparison

Landscape Surfaces

	Old SDP	New Water Conservation SDP
Sod:	103,071 SF	76,705 SF
Landscape Bed:	141,753 SF	96,307 SF
Irrigated Native Seed:	264,101 SF	321,670 SF
Non-Irrigated Native Seed:	1,474,754 SF	1,607,802 SF

Landscape Trees

	Old SDP	New Water Conservation SDP
Canopy Trees:	579	473
Evergreen Trees:	1,101	714
Ornamental Trees:	147	89
Total:	1,827	1,276

Why

- More consistent with other Crystal Valley Filings.
- Follows the objectives of the Town of Castle Rock Landscape and Irrigation Performance Standards adopted April 2018
- Most Importantly: **Uses Less Water**
 - It is anticipated that the new plans will reduce annual water use by 15-20%*
*irrigation plans currently under review by town.

Crystal Valley Ranch Filing 15 SDP Amendment

Town of Castle Rock – Town Council
September 3, 2019