

BELLA MESA POND RELOCATION PLANNING COMMISSION MEETING THURSDAY APRIL 14, 2022



PROJECT TEAM:

HISTORY

APPLICANT

JOHN V. HILL

FOURTH INVESTMENTS
USA, LLC

ENGINEER

EVAN RUMNEY, P.E.

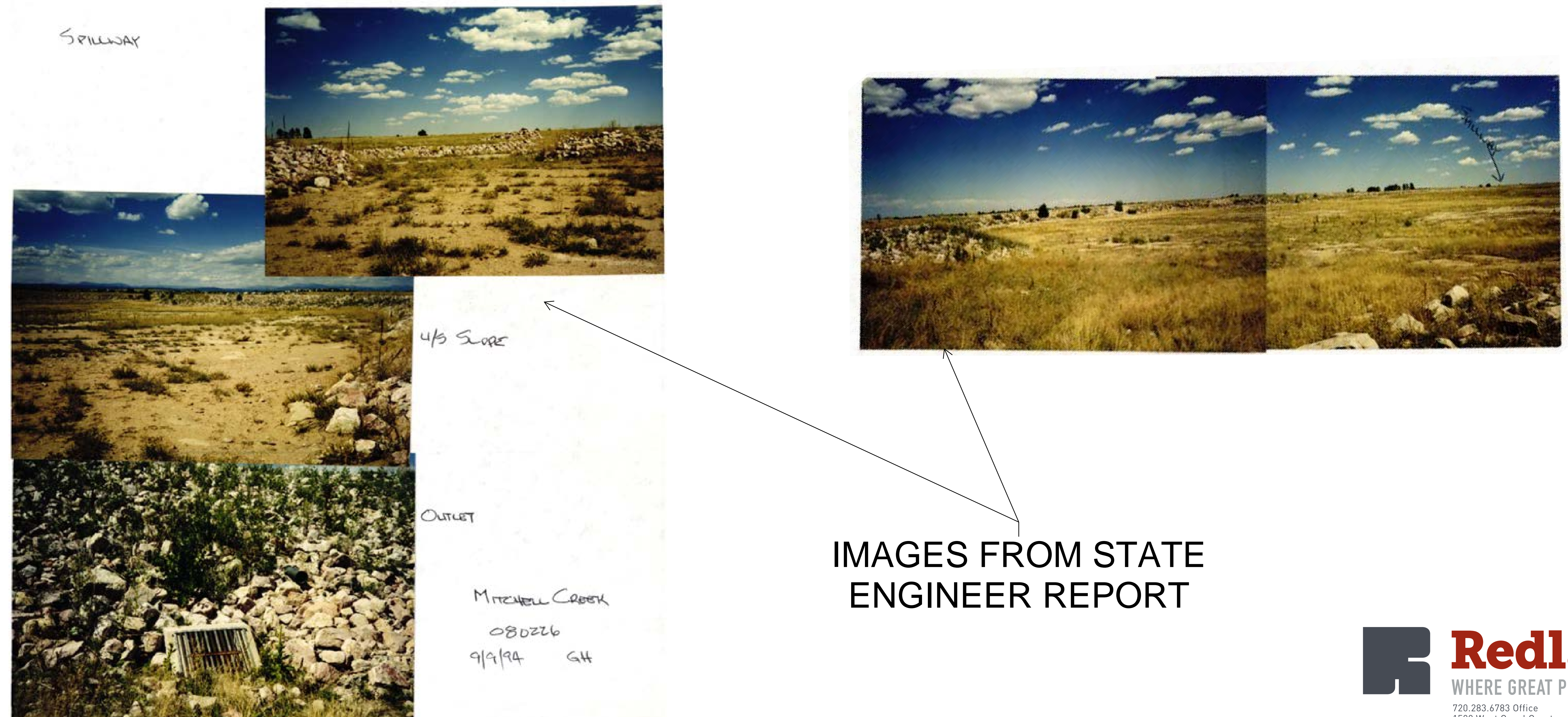
REDLAND

-IN 1986, A DAM WAS DESIGNED AND CONSTRUCTED TO CREATE A WASTEWATER TREATMENT POND FOR THE VILLAGES AT CASTLE ROCK METRO DISTRICT NO. 4.

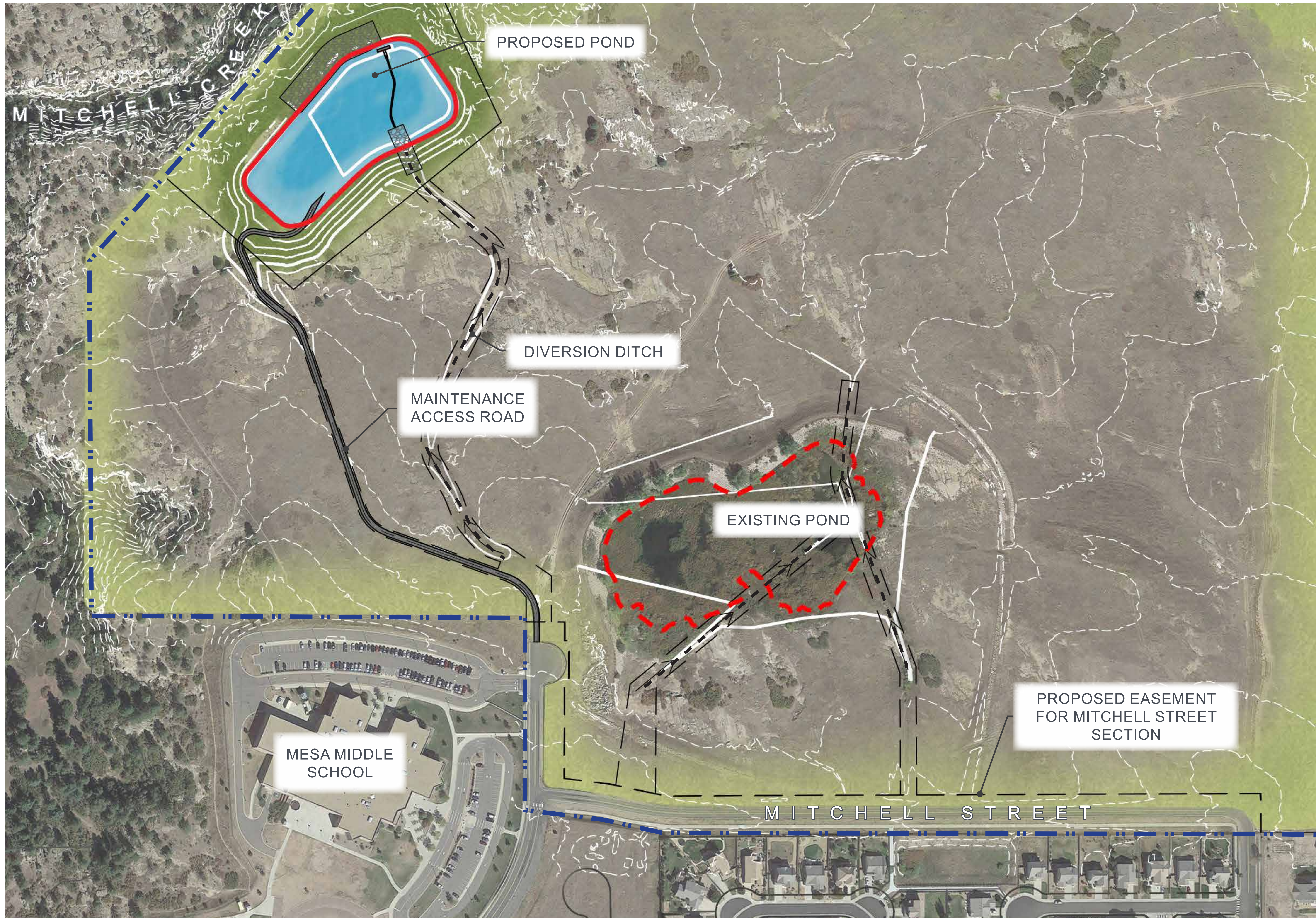
-IN 1994, THE OFFICE OF THE STATE ENGINEER - DIVISION OF WATER RESOURCES - DAM SAFETY BRANCH CONDUCTED AN INSPECTION AND DETERMINED IN THE REPORT THE DAM WAS NON-JURISDICTIONAL IN SIZE, OFF-STREAM, AND WAS CONSIDERED ABANDONED.

-AT SOME POINT AFTER THE STATE ENGINEER INSPECTION, AN OUTLET STRUCTURE WAS CONSTRUCTED TO CONVERT THE WASTEWATER TREATMENT POND INTO A DETENTION POND.

- THE POND CURRENTLY SERVES AS DETENTION AND WATER QUALITY FOR MESA MIDDLE SCHOOL.



BELLA MESA - POND RELOCATION SITE PLAN



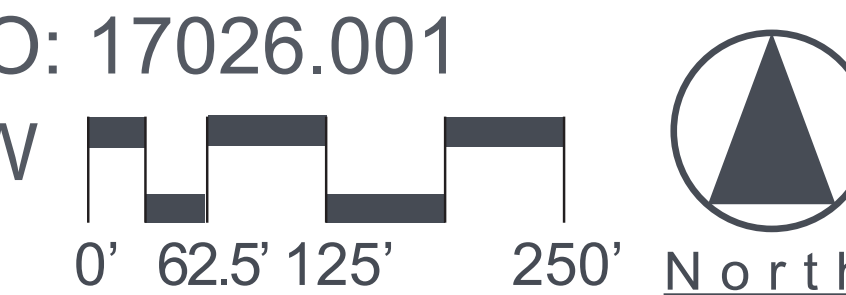
LEGEND

- - - PROPERTY LINE
- - - EXISTING POND
- PROPOSED POND
- - - DIVERSION DITCH
- POND
- DETENTION SEED MIX
- NATIVE SEED MIX

POND RELOCATION EXHIBIT

BELLA MESA POND
CASTLE ROCK, CO.

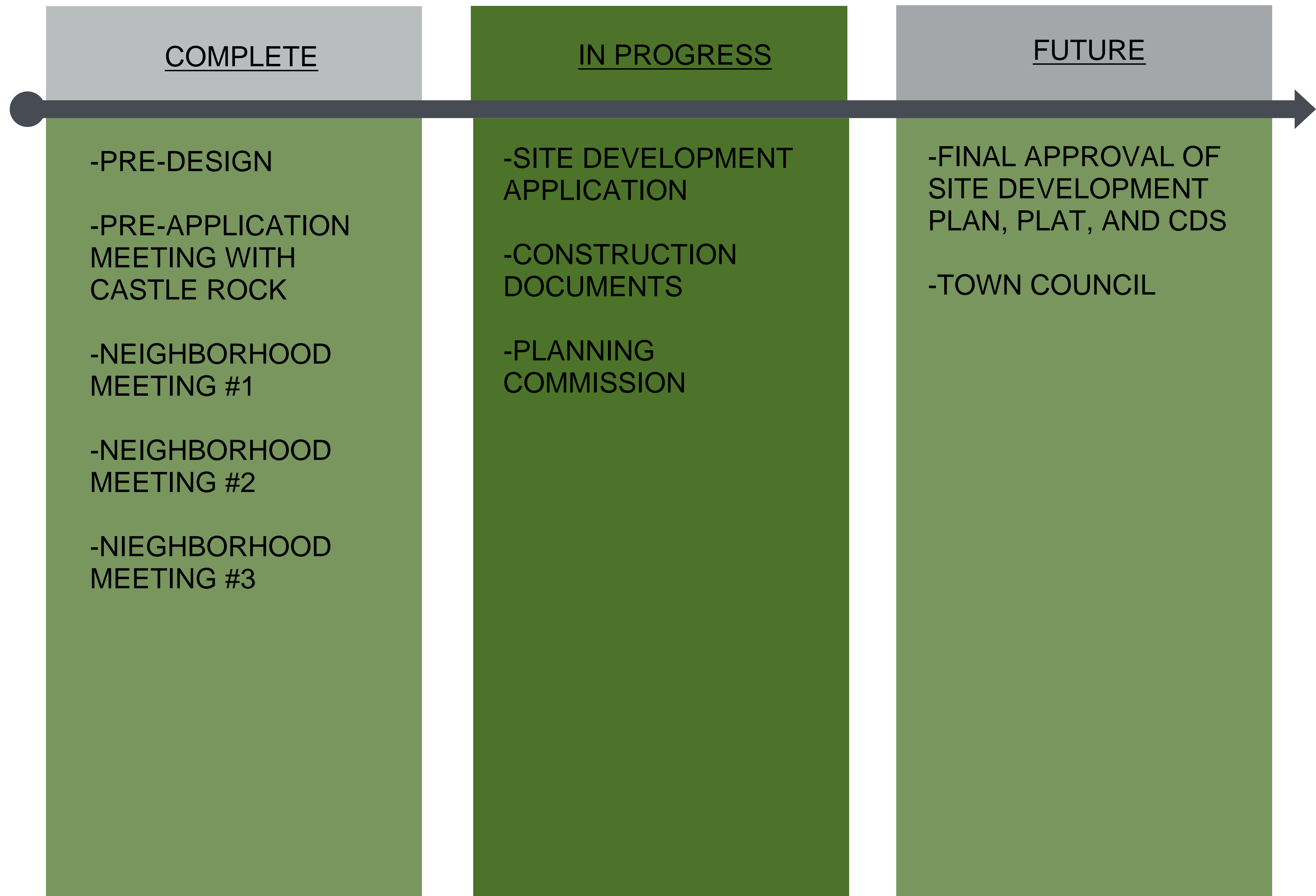
DATE: FEBRUARY 8, 2022 (V.3)
CLIENT: COLORADO LAND
MANAGEMENT LLC
PROJECT NO: 17026.001
AUTHOR: SW



Redland
WHERE GREAT PLACES BEGIN

720.283.6783 Office
1500 West Canal Court
Littleton, Colorado 80120
REDLAND.COM

APPLICATION PROCESS





QUESTIONS?

