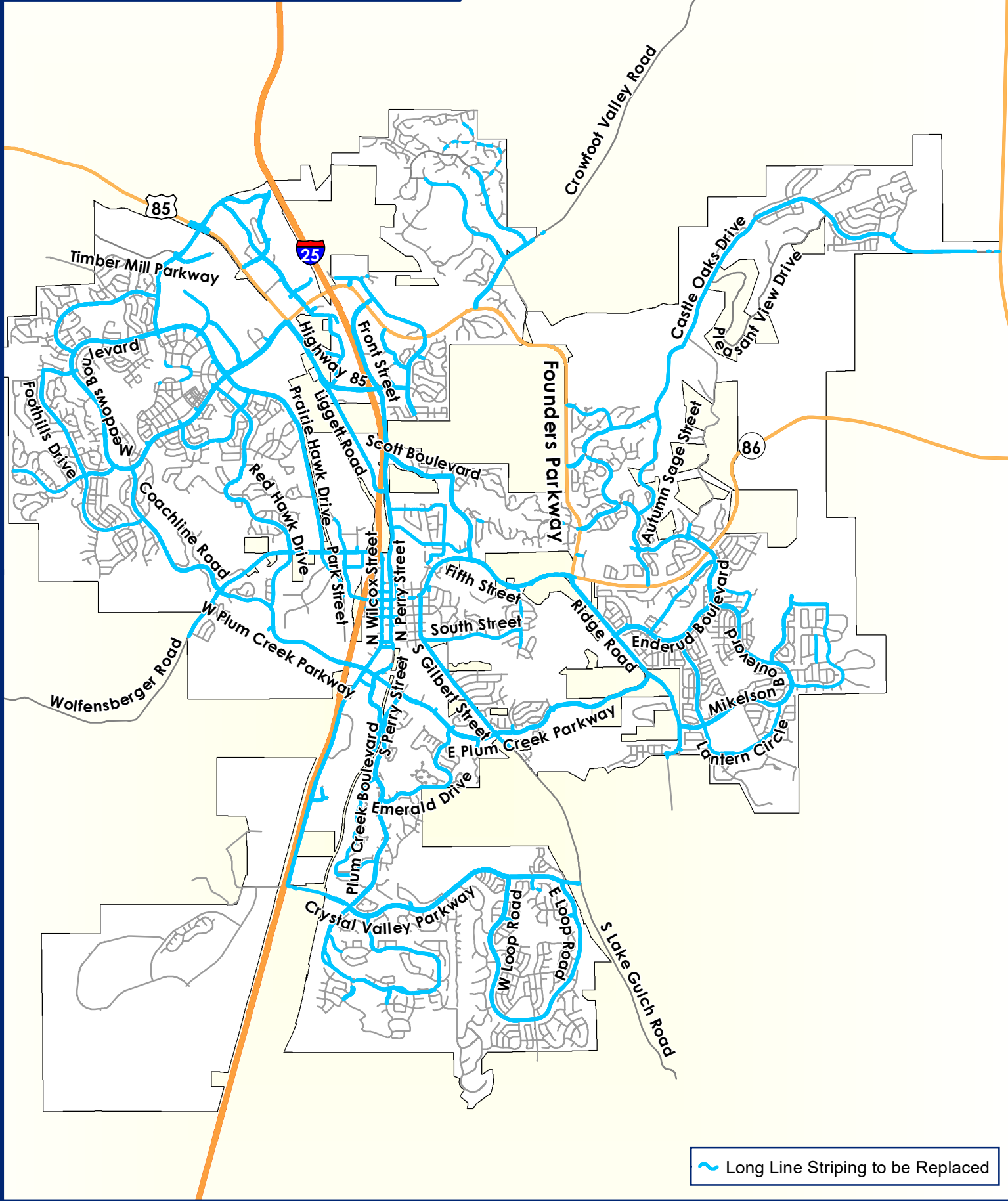


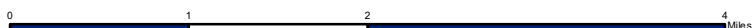


LONG LINE STRIPING

Contractor Striping



~ Long Line Striping to be Replaced

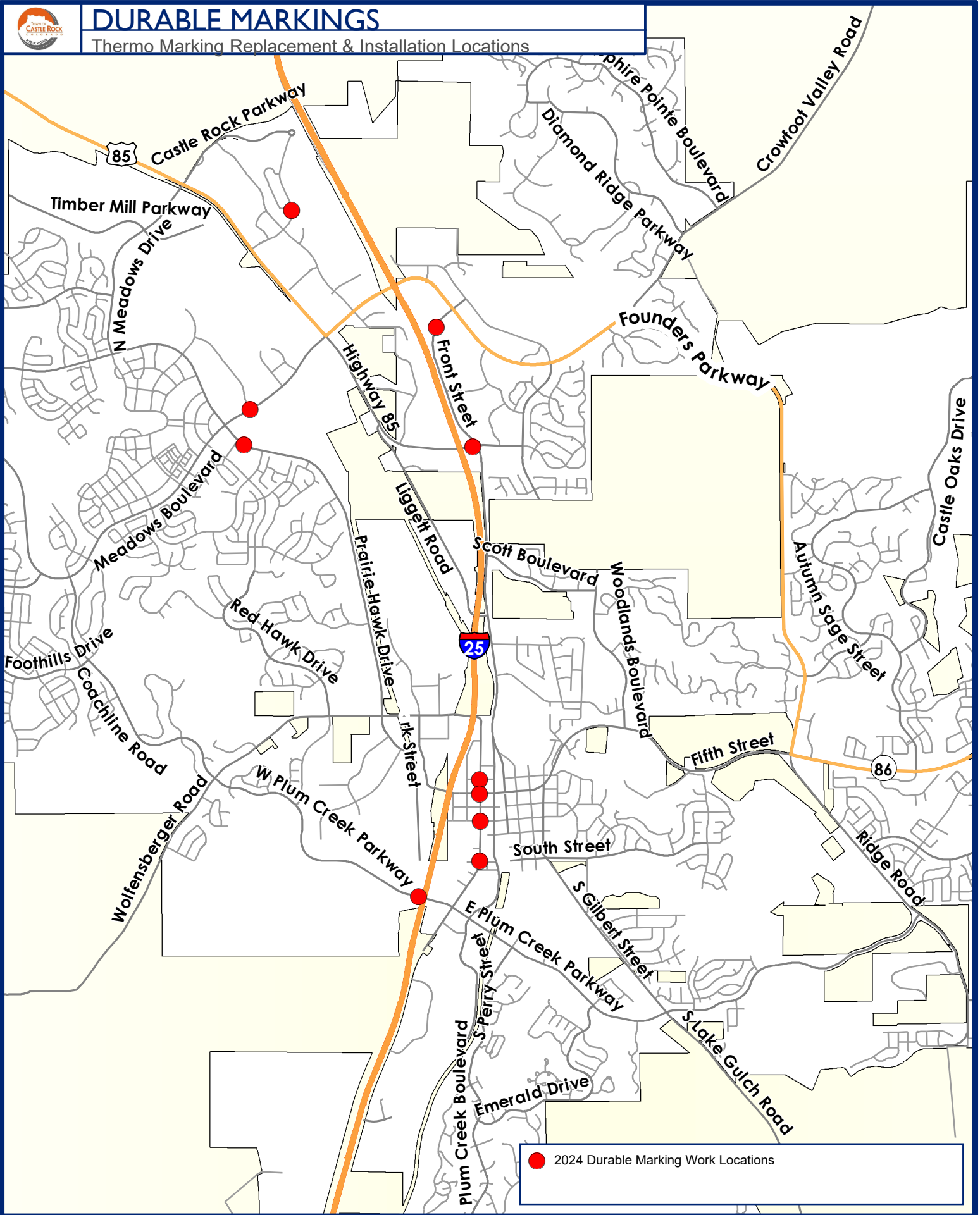


Disclaimer: The data presented has been compiled from various sources, each of which introduces varying degrees of inaccuracies or inconsistencies. Such discrepancies in data are inherent and in supplying this product to the public the Town of Castle Rock assumes no liability for its use or accuracy. For questions or comments regarding omissions, corrections, or updates please visit CRgov.com/directory for contact information.
 Copyright 2024, Town of Castle Rock
 Document Path: J:\GIS\GIS Projects - Transportation\2024_Striping_Quantities\2024_1_18_LongLines_8x11P.mxd



DURABLE MARKINGS

Thermo Marking Replacement & Installation Locations



● 2024 Durable Marking Work Locations

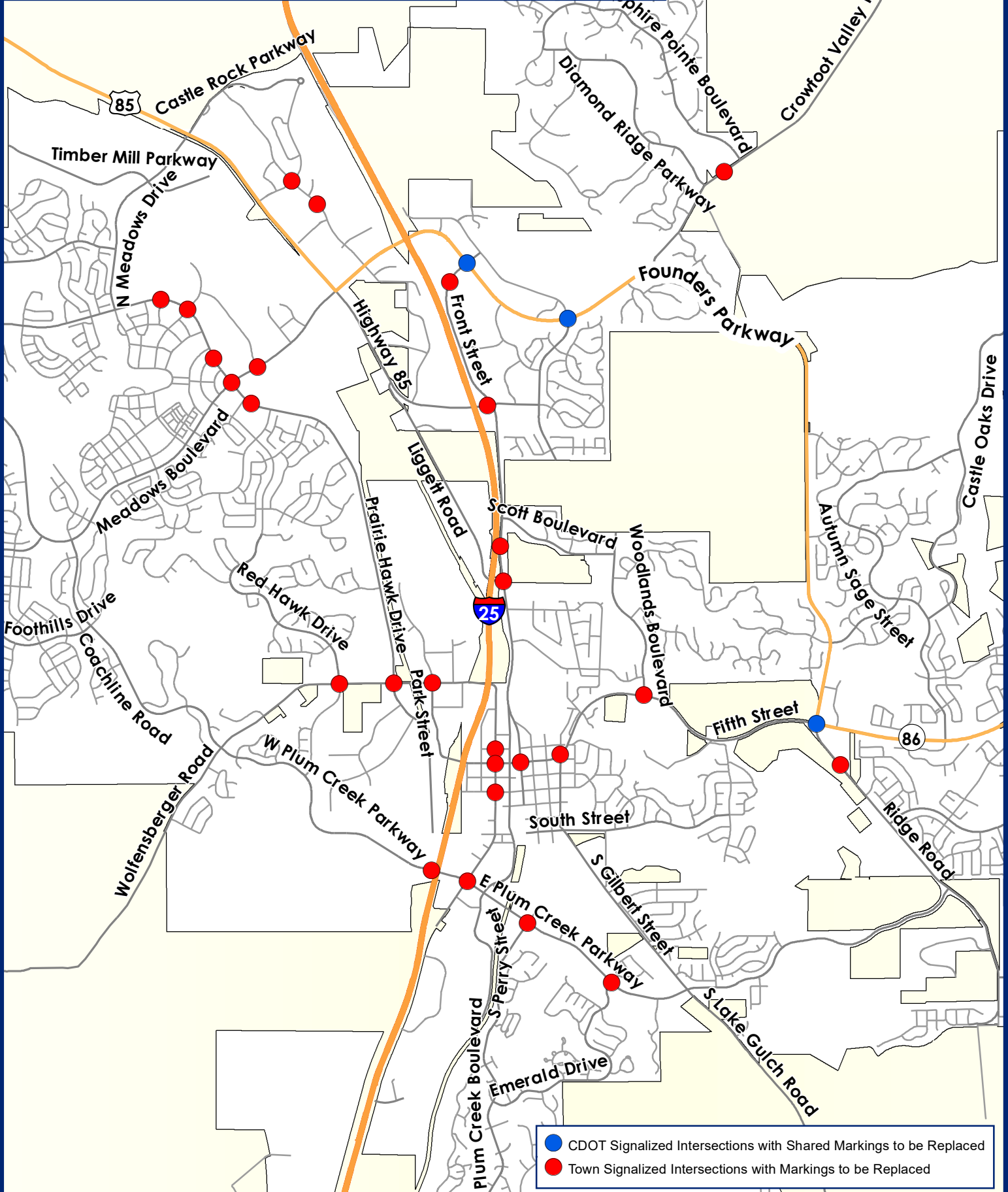


Disclaimer: The data presented has been compiled from various sources, each of which introduces varying degrees of inaccuracies or inconsistencies. Such discrepancies in data are inherent and in supplying this product to the public the Town of Castle Rock assumes no liability for its use or accuracy. For questions or comments regarding omissions, corrections, or updates please visit CRgov.com/directory for contact information.
Copyright 2024, Town of Castle Rock
Document Path: J:\GIS\GIS Projects - Transportation\2024_ Stripping_Quantities\2024_1_16_Signals\edit\IntersectionPaintMarkings_BX11P.mxd



SIGNALIZED INTERSECTION MARKINGS

Acrylic Latex Polymer Marking Replacement Locations



- CDOT Signalized Intersections with Shared Markings to be Replaced
- Town Signalized Intersections with Markings to be Replaced



Disclaimer: The data presented has been compiled from various sources, each of which introduces varying degrees of inaccuracies or inconsistencies. Such discrepancies in data are inherent and in supplying this product to the public the Town of Castle Rock assumes no liability for its use or accuracy. For questions or comments regarding omissions, corrections, or updates please visit CRgov.com/directory for contact information.
 Copyright 2024, Town of Castle Rock
 Document Path: J:\GIS\GIS Projects - Transportation\2024_Stripping_Quantities\2024_1_16_SignalizedIntersectionPaintMarkings_BX11P.mxd