

**RESOLUTION
NAMING THE NEW
NEIGHBORHOOD PARK
IN PLUM CREEK NORTH
EMERALD PARK**

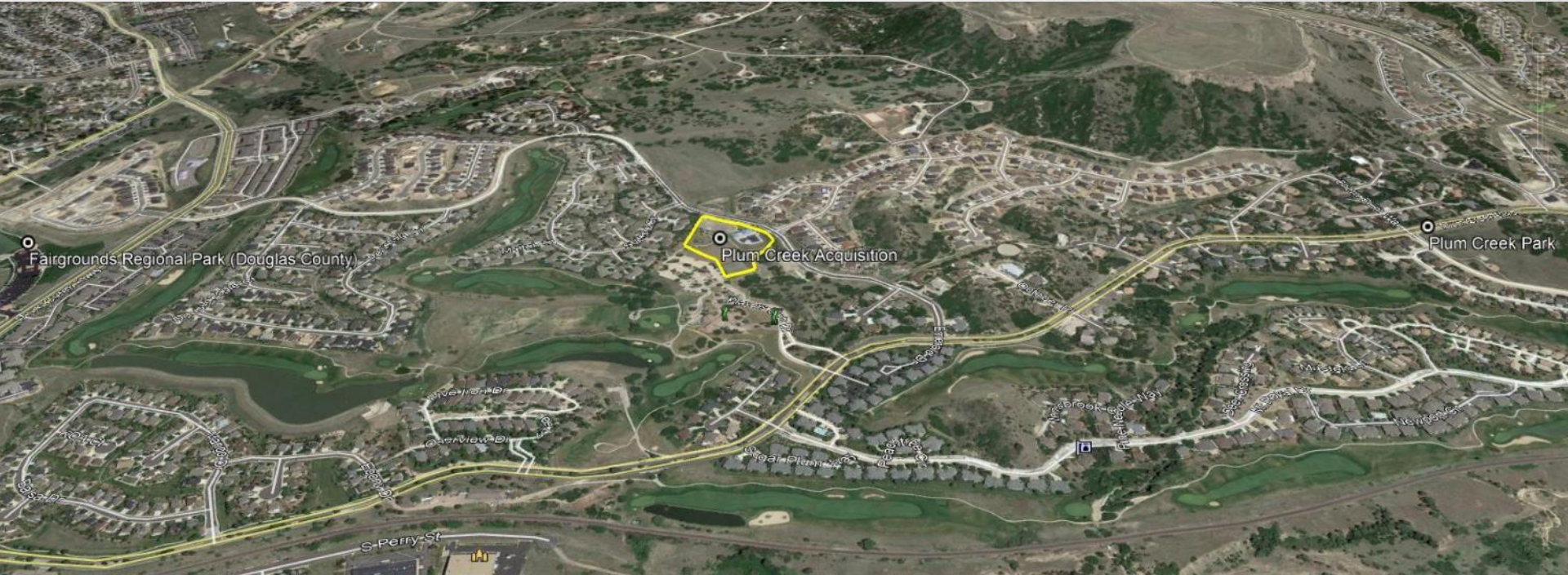


PARKS AND RECREATION
NOVEMBER 7, 2023



PLUM CREEK NORTH PARK

This project was identified as a priority in the department's 2019-2024 Capital Improvement Plan. A new park will be constructed at 2225 Emerald Drive. Town Council approved a construction contract with Colorado Designsapes, Inc. in summer 2023 and construction has commenced.



NAMING POLICY

The Town's facility naming policy says the "goal in selecting names for Town facilities shall be primarily to advance fostering a sense of community and small-town character. This includes names which heighten the awareness of Town history, celebrate the natural environment and call attention to points of pride in our community, to people, events and geography that have shaped the Town, create our sense of place and make our community unique."

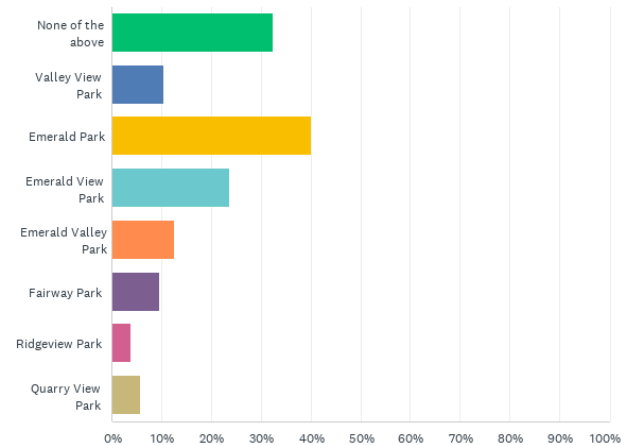
This summer and fall, Town staff gathered input related to naming the new neighborhood park in north Plum Creek.

PUBLIC INPUT

Nearly 500 open-ended suggestions and 230 naming preferences were expressed via an online questionnaire. Among the suggestions and preferences, Emerald Park emerged as a top choice.

Looking at the open-ended responses, Emerald Park or variants thereof, Plum Creek Park and Rock View Park emerged as top suggestions. The Town already has a Plum Creek Park, as well as a Rock Park, so the staff committee believes a more unique, Emerald-containing name is most appropriate - especially given the preferences expressed in reaction to the list of potential names.

Q3 Below is a list of ideas from our park design team. Please check any of the below ideas that you like.



RECOMMENDATION

The Parks and Recreation Commission unanimously endorsed the selection of naming the new neighborhood park in north Plum Creek, “Emerald Park.”

Recommended motion:

“I move to approve the Resolution as introduced by title.”

Alternate motions:

“I move to approve the Resolution as introduced by title, with the following conditions: (list conditions).”

“I move to continue this item to the Town Council meeting on (date) to allow additional time to (list information needed).”



THANK YOU
QUESTIONS?

PARK MASTER PLAN

Landscape architect DHM Design Corporation (DHM) engaged residents and staff to assess needs and desires and obtain public input to create the park's design.



PROJECT BACKGROUND

- Several Executive Sessions held throughout 2019 to discuss potential acquisition
- May 2019 – Town Council provided opportunity for public input on land acquisition
- Independent appraisal performed by Kilty and Company
- Purchase approved and completed late 2019
- Amenities deemed to be beyond repair and removed to ensure public safety and prepare for future park development

