

PUBLIC HEARING

FIRST AMENDMENT TO IGA THE VILLAGES AT CASTLE ROCK METRO DISTRICT NO. 6

DAVID CORLISS, TOWN MANAGER
JULY 2, 2024



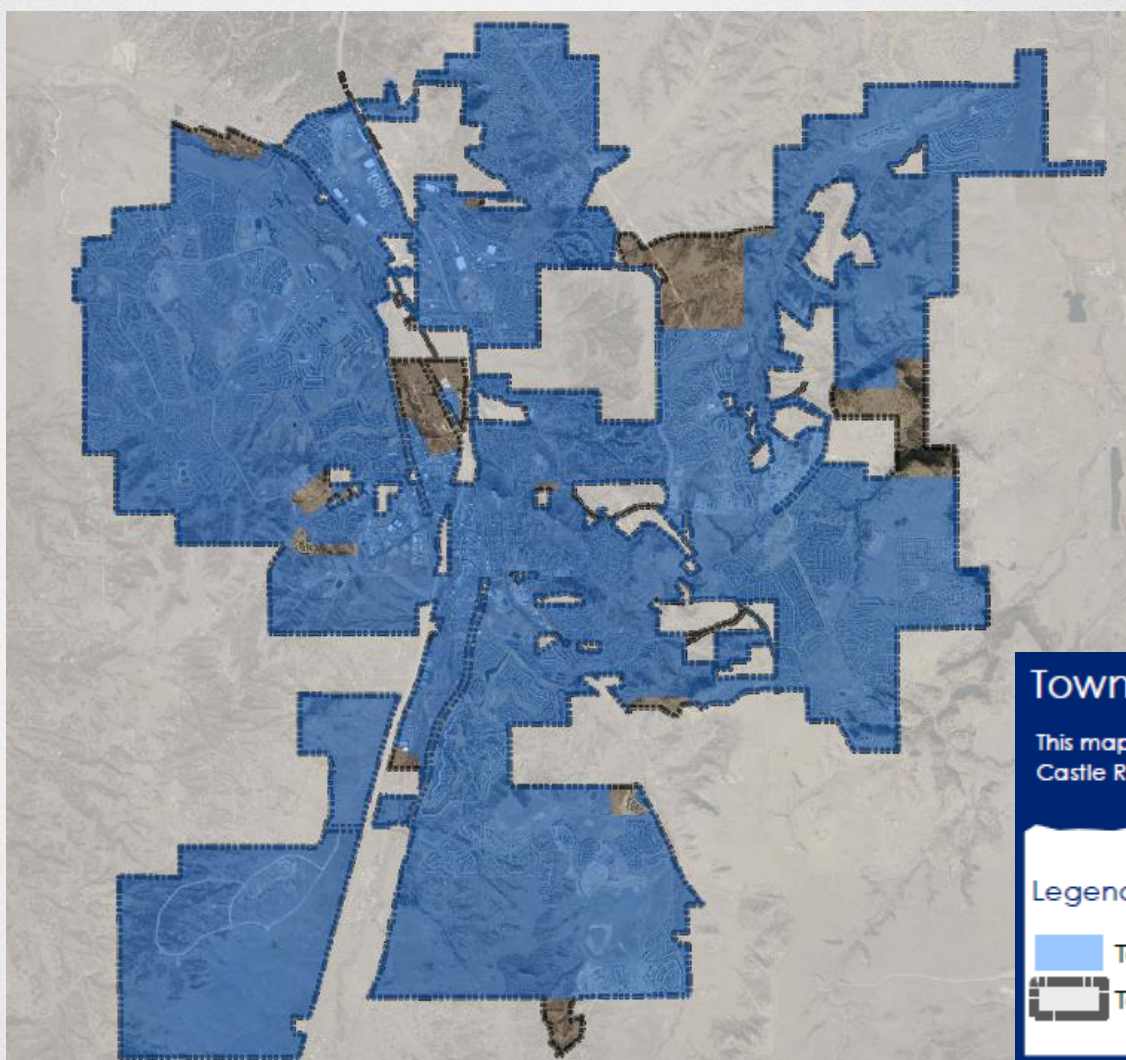
THE VILLAGES METRO DISTRICT NO. 6

FIRST AMENDMENT TO INTERGOVERNMENTAL AGREEMENT

In 2004, the District and the Town entered into an IGA for the funding fire protection/emergency response services to be provided by the Town to District residents, in recognition of the extraordinary distance from the rest of the community.

The District pledged to levy a tax in the amount of 10 mills remitted to the Town to fund fire/emergency services. Since that time, the Town has continued to grow in the general direction of the District.

On February 6, 2024, Town Council authorized the IGA with the Villages at Castle Rock Metropolitan District No. 6 to alter the existing 2004 IGA.





Town Boundary 2004

This map depicts the Town of Castle Rock boundary in 2004



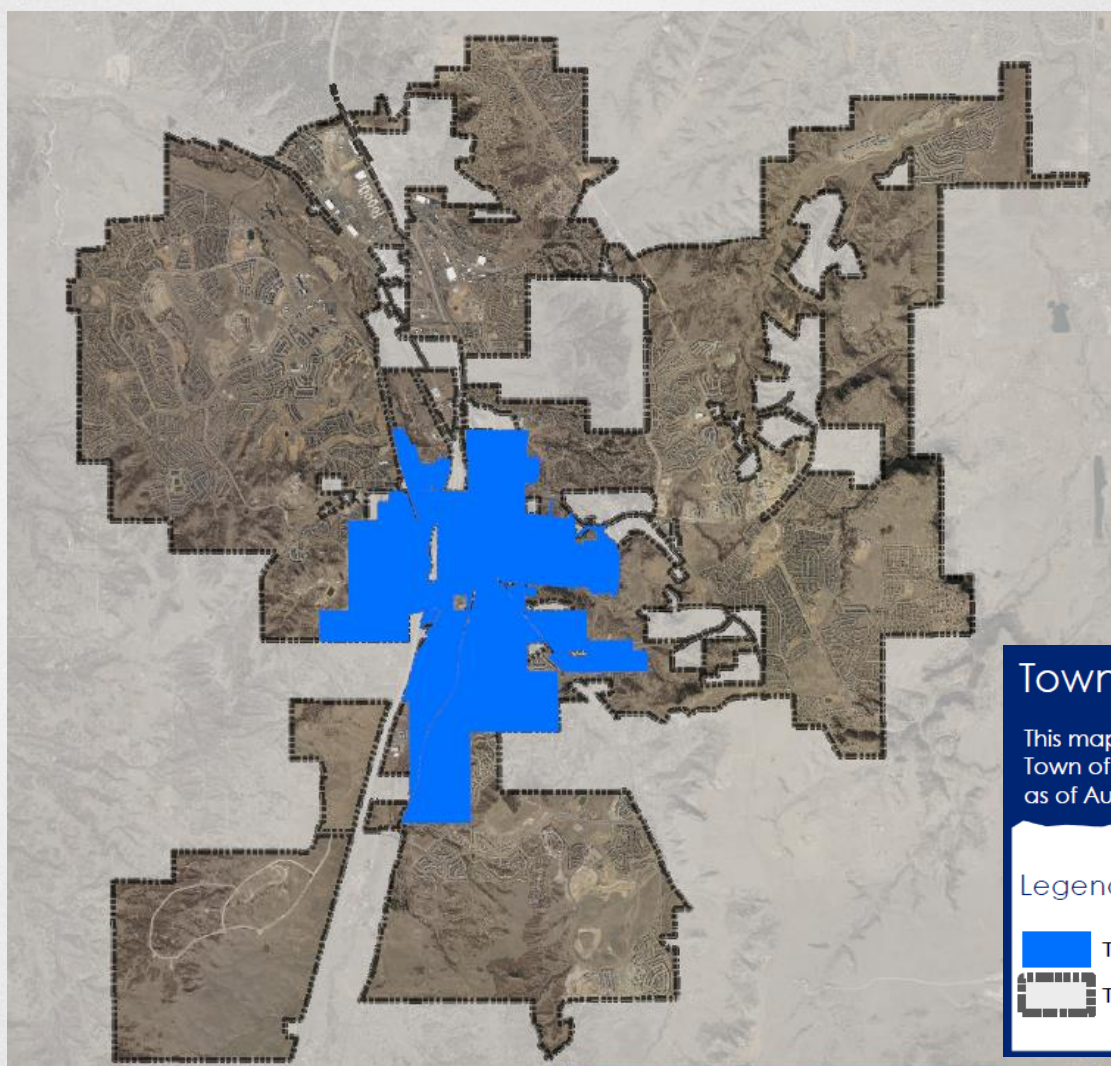
Legend

 Town Boundary - 2004

 Town Boundary - Current

Disclaimer: The data presented has been compiled from various sources, each of which introduces varying degrees of inaccuracies or inconsistencies. Such inaccuracies in data are inherent and in supplying this product to the public, the Town of Castle Rock assumes no liability for its use or accuracy. For questions or comments regarding questions, corrections, or updates please visit crgov.com/directory for contact information.
Copyright 2024, Town of Castle Rock

Coordinate System: NAD 83 Colorado Central (2011)
Projection: Lambert Conformal Conic
Datum: North American 1983
Units: Feet US
Created Date: 1/1/2024



Town Boundary August 3, 1981

This map depicts the
Town of Castle Rock boundary
as of August 3rd 1981



Legend

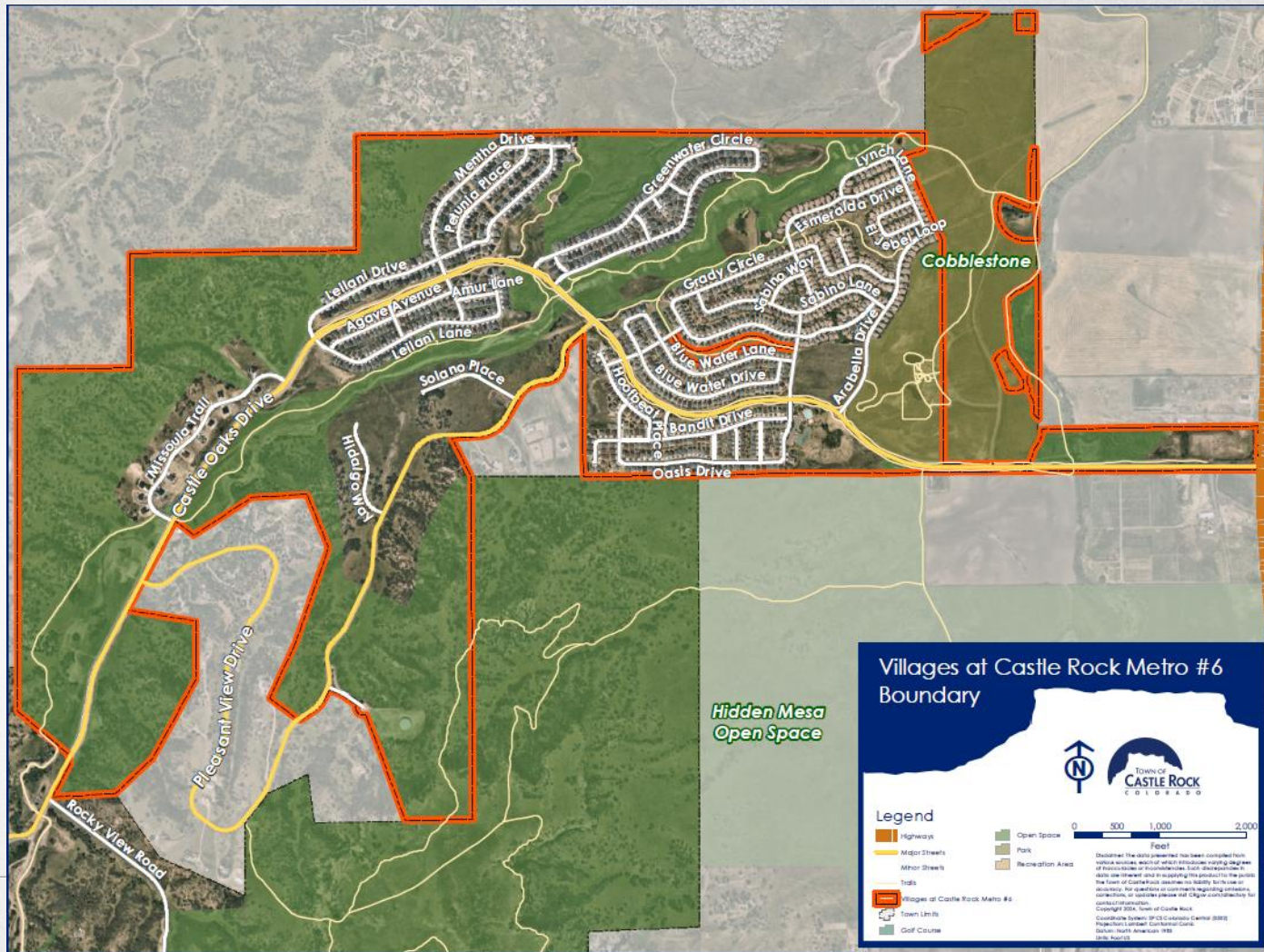


Town Boundary - Aug 3 1981

Town Boundary - Current

Disclaimer: The data presented has been compiled from various sources each of which introduces varying degrees of inaccuracies or inconsistencies. Such discrepancies in data are inherent and in supplying this product to the public the Town of Castle Rock assumes no liability for its use or accuracy. For questions or comments regarding omissions, corrections, or updates please visit CRgov.com/directory for contact information. Copyright 2024, Town of Castle Rock.

Coordinate System: SPCS Colorado Central (5002)
Projection: Lambert Conformal Conic
Datum: North American 1983
Units: Foot US
Creation Date: 1/14/2024



THE VILLAGES MD NO. 6

RECOMMENDED MILL LEVY PHASE DOWN

Certification Year of Metro District Mill Levy	Recommended Phased Down Mill Levy
2026	9 mills
2027	8 mills
2028	7 mills
2029	6 mills
2030 and all years thereafter	5 mills

STAFF RECOMMENDATION

THE VILLAGES AT CASTLE ROCK METRO DISTRICT NO. 6

Staff recommends Town Council approve the resolution amending the IGA with the metro district reflecting a phased reduction in the mill levy, beginning after Fire Station No. 156 is operational, to a new permanent based of 5 mills.



QUESTIONS?

RECOMMENDED MOTION

"I move to approve the Resolution as introduced by title."

ALTERNATIVE MOTIONS

"I move to approve the Resolution with the following conditions:_____."

"I move to continue this item to [date] to allow time for: _____."