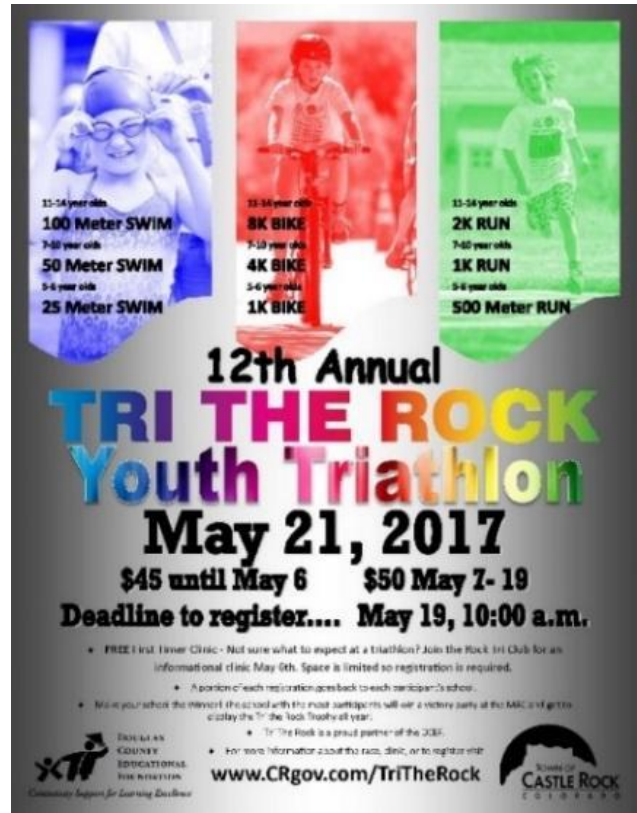


UPCOMING PARKS AND RECREATION EVENTS

- **REAL Climb4Change**
 - o May 13, 8 a.m.-noon - Challenge Hill at Philip S. Miller Park
- **Tri the Rock**
 - o May 21, 8 a.m.-noon - Butterfield Crossing Park and Pool
- **2017 Summer Concert Series - Super Diamond**
 - o May 27, 7 p.m. - Amphitheater at Philip S. Miller Park
- **National Senior Health and Fitness Day**
 - o May 31, 9-11 a.m. - Amphitheater at Philip S. Miller Park
- **Free Fitness Fridays**
 - o June 2, 9, 16, 23 and 30, 8-9 a.m. - Amphitheater at Philip S. Miller Park
- **National Trails Day**
 - o June 3, 9 a.m.-noon - Rueter-Hess Reservoir
- **Free Yoga in the Park**
 - o Jun 4, 11, 18 and 25, 9-10 a.m. - Amphitheater at Philip S. Miller Park
- **REAL Morning ZUMBA Fundraiser**
 - o June 10, 9:30-11 a.m. - Amphitheater at Philip S. Miller Park
- **2017 Summer Concert Series - Thompson Square**
 - o June 10, 7 p.m. - Amphitheater at Philip S. Miller Park
- **Tunes for Trails / Perks for Parks Free Concert "Boogie Machine"**
 - o June 29, 6-9 p.m. - the Amphitheater at Philip S. Miller Park



Parks and Recreation to host first event at Rueter-Hess Reservoir with guided hikes

Parks and Recreation staff members are excited to offer Castle Rock residents the first Town-organized event at the Rueter-Hess Reservoir. The primary purpose of the reservoir is to store safe, clean drinking water. Its secondary purpose is to provide recreational opportunities to the surrounding communities and Colorado's Front Range.

National Trails Day is scheduled on June 3 from 9 a.m.-noon. Be the first to blaze the trails and discover the uncharted natural environment. Guided hikes are scheduled every 30 minutes, and residents can register online at crgov.com/registration.

This American Hiking Society event is part of a nationally recognized trail awareness program that occurs annually on the first Saturday in June. The program is intended to inspire the public to discover, learn about and celebrate trails.

Rueter-Hess is located roughly one mile east of the I-25 and Castle Pines Parkway exit.



PARKS, OPEN SPACE AND TRAILS – PLANNING AND CONSTRUCTION DIVISION

PREPARED BY BRIAN PETERSON, MANAGER OF PARK PLANNING AND CONSTRUCTION

Festival Park

Park Planning and Construction Manager, Brian Peterson, continued to oversee construction activities at Festival Park, bringing it closer to completion. M.A. Mortenson Company finished the cut off walls and the necessary rock work for the drop structures in Sellars Gulch; placed four concrete footers for the bridge abutments and two eastern abutments; constructed ten concrete footers and pilasters to complete the foundation work for the overlook structure; and poured the concrete walls at the corner of Perry and Second streets, which commenced the project's backfilling. Despite the rain and snow that came in April, construction is still on schedule.



Operation and Maintenance Facility

Throughout April, staff worked with the selected architect, HB&A, to design the new Operation and Maintenance Facility. The facility will be shared by the Town's Park Maintenance and Facilities Divisions. The building's site is located at the end of Caprice Street at the old waste water treatment plant.

Several meetings were held to determine the necessities of both departments, including a final charrette to present the various design options to staff. The options were then narrowed down to two finalists and the designs will be strategically adjusted according staff feedback. The Park Planning Division will meet with the architects in May to review the two designs and make a final selection.

Third and Perry Roundabout

Parks Planning and Construction Manager, Brian Peterson, coordinated with the Public Works Department to design the landscaping for a new roundabout located at Third and Perry streets. Staff selected the same firm who planned the landscaping elements for Festival Park, Design Workshop. The continuity of design between the park and intersection will ensure a coordinated theme for landscaping in the downtown district.

Design principles will focus on using variety to create interest through texture, color and height. Native plants and perennials will be utilized to work within the local climate and provide seasonal color.

Staff attended two public outreach meetings held by the Public Works Department to inform the general public of the project. Construction for the roundabout is scheduled to begin late June.



CORAL CANYON
TIWNSPUR 18" H



SONORAN SUNSET
HYSSOP- 16" H



JUPITER'S BEARD
-30" H

TRAIL PROJECTS

PREPARED BY RICH HAVEL, TRAILS PLANNER

East Plum Creek Trail

The extension of the East Plum Creek Trail is a two-mile segment that will lengthen the trail south of Perry Street near Safeway to Crystal Valley Parkway. Most of the southern extension will be on Town owned open space, however, the Department will need to acquire two privately owned parcels. Staff and property owners have arranged fee purchase agreements and both agreements were sent to respective owners for signatures and execution. Final closing dates are scheduled in June.



On April 5, the design team and Town staff held an onsite meeting to walk the proposed trail alignment. This action helps to identify potential site issues and establish a final route. Since the trail will cross an underpass owned by the railroad, Union Pacific was contacted and the initial engineering review by the railroad is underway. A site condition review meeting is scheduled with the railroad on May 2.

Mitchell Creek Trail Connection

Throughout April, staff continued to work with the Founders District in Founders Village to connect Mitchell Creek Trail to Ridge Road and Tabor Court. The connections are a joint project between the two entities, where the District is responsible for funding the design and construction and the Town of Castle Rock is responsible for project management and coordination.

In April, the contractor completed 530 linear feet of eight-foot wide concrete trail. Remaining items for the Ridge Road connection include: 250 linear feet of trail, 310 linear feet of railing for a walled section, four ADA ramps, site backfill and re-vegetation. Once the Ridge Road connection is completed in mid-May, the contractor will mobilize for the Tabor Court trail connection.

Philip S. Miller Park Trail Connection and Reroute

As part of a development agreement with the Park Preserve neighborhood just north of the Philip S. Miller Park, a trail connection was required to be constructed to Wood Thrush Way. To initialize the project, staff competitively bid and awarded Tony Boone Trails the 1,500 linear foot native surface trail project. Design and construction was completed in April.



The Town also contracted with Tony Boone Trails to extend a switchback on the Blue Loop near the Challenge Hill to provide a midway connection. This connection will provide users another descent option and decrease the grade of the existing trail to improve its walkability and safety. The contractor used the services of the New Mexico Youth Corps Ecoservants to provide vegetation restoration assistance. The workers replanted native grasses, plants and shrubs and provided trail users safe access around the worksite. The project was completed ahead of schedule.

Special Programs and Events

PREPARED BY HEATHER ROSSITER, SPECIAL PROGRAMS SUPERVISOR, AND JENNIFER REINHARDT, EVENTS SPECIALIST

With warmer weather moving in, April proved to be a fast-paced, non-stop month. The Special Programs Division kept up pace with pavilion reservations, Millhouse rentals and race coordinating. In mid-April, Mother Nature prevailed and led to the rescheduling of both the Rock Hawk and Ridgeline Rampage races. Both events were pushed to May.

For the second year in a row, the Sunrise Service was the season opener at the Amphitheater at Philip S. Miller Park. Hundreds came out for the Easter Celebration hosted by Calvary Church.

In April, Special Events went through a Request for Proposal selection process for a ticketing site for the Summer Concert Series. The Division decided to embark on an exciting new relationship with Altitude Tickets. Altitude Tickets serves other big-name venues like the Pepsi Center, Dick's Sporting Goods Park, 1st Bank Center and Hudson Gardens.

Within less than one week, sales through Altitude Tickets proved successful. Compared to 2016, 562 tickets sold in the first four days versus 108 that sold during the same time period last year. The sales to date mark a 420% increase and are more than the entire first month of ticket sales in April of last year.



MAY 27 • SUPER DIAMOND
JUNE 10 • THOMPSON SQUARE
JULY 2 • COLORADO SPRINGS PHILHARMONIC
AUGUST 26 • LITTLE RIVER BAND
SEPTEMBER 22 • HALFWAY TO HAZARD

**2017
SUMMER
CONCERT
SERIES**

Great music, perfect temperatures and spending time under the stars is the recipe for a beautiful summer night in Castle Rock. Enjoy live music from nationally known bands, along with craft beer and cocktails under the stars.

Town of Castle Rock's Summer Concert Series at the Amphitheater at Philip S. Miller Park. Select weekends May through September.

**AMPHITHEATER AT
PHILIP S. MILLER PARK**

CRgov.com/PSMconcerts



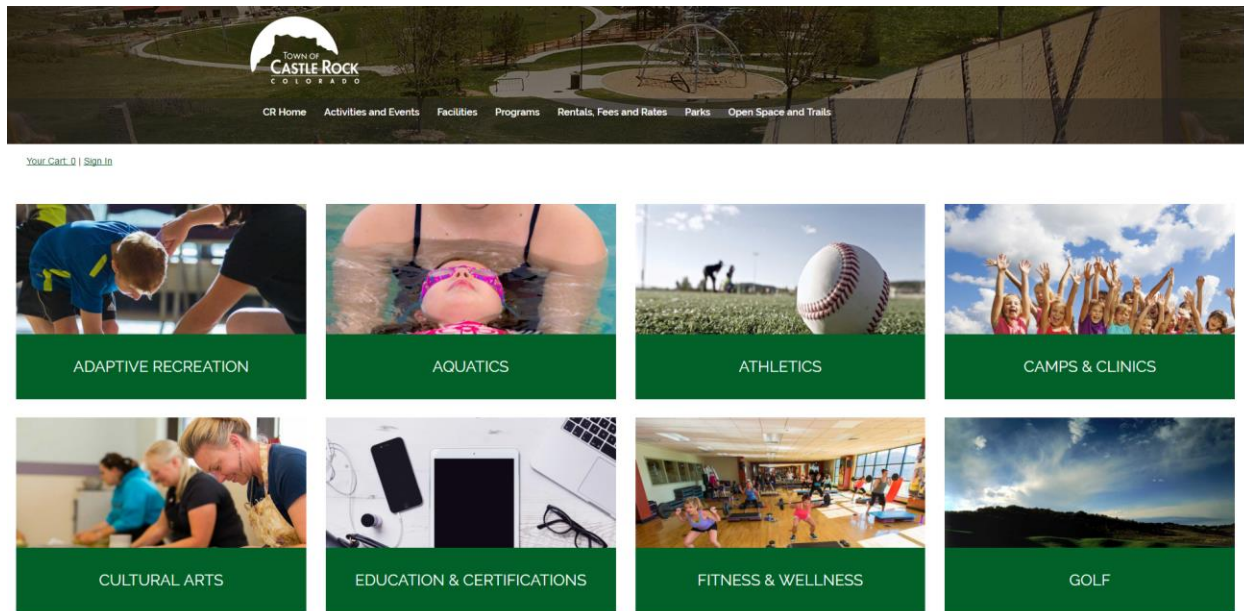
Online Registration via Rec Biz

PREPARED BY DAN WAHL, RECREATION FACILITIES SUPERVISOR

A new online registration portal went live in April after months of coordination and collaboration between the Recreation administrative staff and the Rec Biz software developer. The launch was timed to coincide with the delivery of the Spring Summer Recreation Guide and the opening of program registration.

The new software allows for an improved mobile-friendly experience and an intuitive listing of program offerings. Feedback from patrons is positive and the department is excited to offer such a significant improvement in service.

In the past, online registrations accounted for 63% of all program signups. Since the new software was implemented, online registrations increased to 79%. The increase reduces the amount of time staff spend on the phone, while increasing overall convenience for customers.

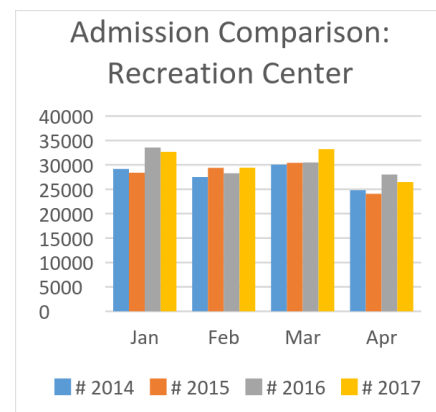


Recreation Center Operations

PREPARED BY DAN WAHL, RECREATION FACILITIES SUPERVISOR

April 2017 was the second busiest April on record at the Recreation Center. Year over year, admission numbers are down slightly in April due to the Easter holiday closure. A more accurate indicator is to compare the four year average which shows a growth of 2% in April 2017.

The Recreation Center continued to serve as an alternative location for MAC aquatic programming



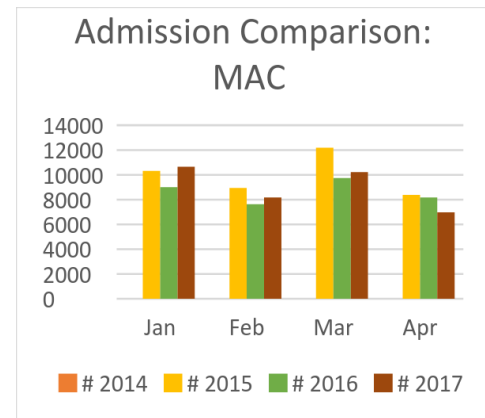
and recreational users throughout April due to the closure of the MAC pool. Foot traffic in the Recreation Center Leisure Pool increased by 30% compared to April of 2016.

MAC Operations

PREPARED BY DAN WAHL, RECREATION FACILITIES SUPERVISOR

April at the MAC is traditionally one of the three slowest months of the year. April 2017 held to this trend with the continued, unplanned closure of the MAC pool forcing aquatics users to seek an alternative location to meet recreational needs.

When compared to April of 2016, admissions decreased 11% and foot traffic at the front entrance decreased 27%. Trampoline admissions held steady year over year, identifying the pool closure as the primary cause for the decrease in attendance.



Fitness

PREPARED BY COURTNEY GLASS, FITNESS AND WELLNESS COORDINATOR



Group Fitness classes were regularly at capacity in April. Hydro Power, an aqua fitness class taught by instructor Jeannie, averaged 29 participants per class. The Silver Sneakers Cardio format, held on Mondays and Wednesdays at 9:30 a.m. and taught by Dianne, averaged 38 participants per class. Overall Group Fitness classes increased by 24% in April of 2017 when compared to April of 2016.

The Personal Training program had another successful month. Pilates Reformer exhibited a 44% increase in participation, which prompted the Fitness Division to seek additional instructors to better accommodate demand. The purchase of Buddy Training and 10-Pack Sessions demonstrated growth of 58% and 33% respectively.

Aquatics

PREPARED BY ZACH MORRIS, AQUATICS SUPERVISOR

The swimming pool at the MAC was closed for most of the month of April due to a boiler failure. The new boiler arrived and was installed on April 13. Additional corrections to the previous installation piping were required. After several inspections, the boiler fired up on April 26 and the pool reopened on April 28. The downtime allowed Aquatics staff to perform maintenance and upkeep and deep clean evolutions. Painting and nonslip floor coatings were applied to the lifeguard office and storage room.



Resurfacing of the Recreation Center body slide occurred during the last week of April. The job took slightly longer than anticipated due to the removal of previous bondo repairs, the removal of multiple layers of gel coat and correcting previous applications of fiberglass. Aquatics staff were fully involved throughout the process and are confident in the quality and integrity of the final product.





PARKS AND RECREATION DEPARTMENT

MONTHLY REPORT FROM JEFF BRAUER, DIRECTOR

APRIL 2017

PAGE 11 OF 11

Red Hawk Ridge Golf Course

PREPARED BY BOB PERSICHETTI, HEAD GOLF PROFESSIONAL

Operations



The golf course was playable for 25 days in April. Total revenue for the month (\$186,781) was \$39,282 above the 10-year average. Heading into the golf season, the golf fund is \$88,645 ahead of budget and \$127,967 ahead of the same period in 2016. The average income per player is \$1.27 below the average in 2016 which is expected in the shoulder seasons when round counts increase. Overall, the golf fund is in a very healthy position through the first trimester of the year.

Staff continued to coordinate and plan for the 2017 season. Staff met with merchandise vendors to prepare pre-book orders, learned a new tournament management software, prepared the master calendar and tee sheets for the season, met with league committees to set up schedules and organized in preparation for the year.

	Current Month	Budget	Previous Year	Year to Date	Previous Year
Total Revenue	\$186,781	\$170,774	\$124,134	\$379,209	\$251,242
Total Rounds	2,454	2,200	1,554	4,990	3,252
Avg. Income/Player	\$76.11	\$76.93	\$79.88	\$75.99	\$77.26
Golf Shop Sales	\$10,510	\$11,100	\$8,833	\$27,037	\$19,373
F&B Sales	\$26,285	\$23,821	\$17,328	\$59,664	\$37,142